

161± Acres For Sale
2000 North Jefferson Street
Milledgeville, GA 31061



Summary

Area Info

Aerial

Survey



CONTACT

Patty Burns, CCIM, ALC
478-746-9421 Office
478-951-5100 Cell
patty@fickling.com

Trip Wilhoit, CCIM, ALC
478-746-9421 Office
478-960-4080 Cell
trip@fickling.com

Jonathan Schuemann
478-746-9421 Office
561-676-4633 Cell
jonathan@fickling.com



577 Mulberry St, Suite 1100
Macon, GA 31201
478.746.9421 Office
<https://commercial.fickling.com>

161± Acres For Sale

2000 North Jefferson Street
Milledgeville, GA 31061



Summary

Area Info

Aerial

Survey

PROPERTY INFORMATION

BUILDING

Property Address: 2000 North Jefferson Street
Milledgeville, GA 31061

County: Baldwin

Taxes: \$3,173.58 (2024 est.)

Topography: Gently Rolling

Frontage: Tract A: 1,891' ±

Utilities: County water & sewer available

Traffic Count: 12,000 Vehicles Per Day

SITE

Site Size: 161± Acres (3 tracts)

Parcel ID: 087 003

Zoning: None – Located in Baldwin County

Demographics 2024	1 Mile	3 Miles	5 Miles
Population	1,614	12,452	26,885
Avg HH Income	\$125,238	\$118,048	\$97,614
Median Age	40.1	34.2	34.8

SALE PRICE: \$10,000/Acre

CONTACT

Patty Burns, CCIM, ALC
478-746-9421 Office
478-951-5100 Cell
patty@fickling.com

Trip Wilhoit, CCIM, ALC
478-746-9421 Office
478-960-4080 Cell
trip@fickling.com

Jonathan Schuemann
478-746-9421 Office
561-676-4633 Cell
jonathan@fickling.com



577 Mulberry St, Suite 1100
Macon, GA 31201
478.746.9421 Office
<https://commercial.fickling.com>

This information is from resources deemed to be reliable and is subject to change without notice. No warranties or guarantees for accuracy are made by Fickling and Company.

161± Acres For Sale

2000 North Jefferson Street

Milledgeville, GA 31061



Summary

Area Info

Aerial

Survey

PROPERTY INFORMATION

DESCRIPTION

Ideal for residential subdivision or estate lots, with frontage that is ideal for commercial development. Property is comprised of three tracts, and frontage is available on both sides of North Jefferson Street. Property has gently rolling topography, and county water and sewer are available.

LOCATION

Located in Baldwin County. 5 minutes to downtown Milledgeville, Oconee Regional Hospital, the Highway 441 retail corridor, Kroger, and Aubri Lane's at The Club at Lake Sinclair. Nearby businesses include Milledgeville Country Club, Kroger, Biba's Italian Restaurant, and Exchange Bank.



CONTACT

Patty Burns, CCIM, ALC
478-746-9421 Office
478-951-5100 Cell
patty@fickling.com

Trip Wilhoit, CCIM, ALC
478-746-9421 Office
478-960-4080 Cell
trip@fickling.com

Jonathan Schuemann
478-746-9421 Office
561-676-4633 Cell
jonathan@fickling.com



577 Mulberry St, Suite 1100
Macon, GA 31201
478.746.9421 Office
<https://commercial.fickling.com>

161± Acres For Sale
2000 North Jefferson Street
Milledgeville, GA 31061



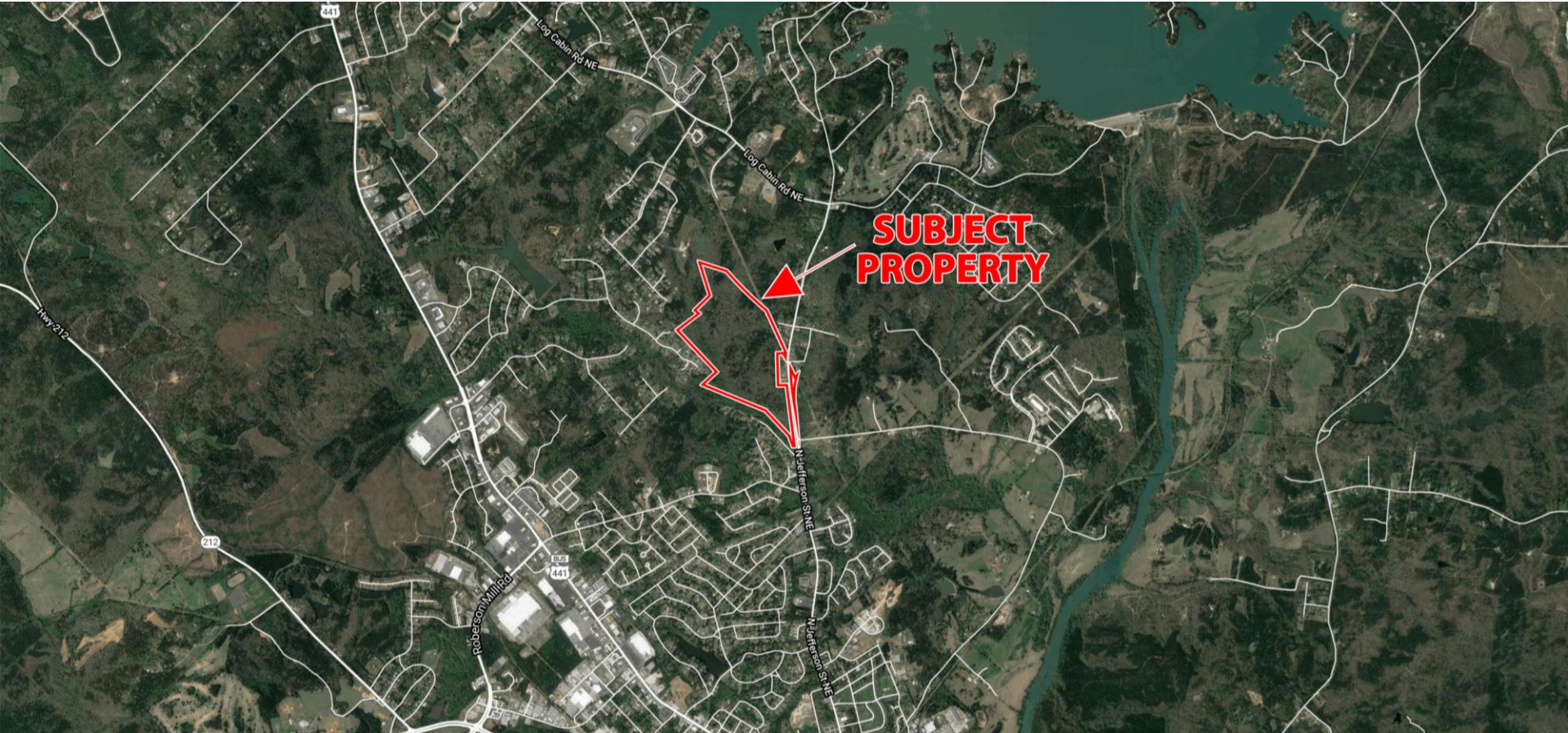
Summary

Area Info

Aerial

Survey

AERIAL



CONTACT

Patty Burns, CCIM, ALC
478-746-9421 Office
478-951-5100 Cell
patty@fickling.com

Trip Wilhoit, CCIM, ALC
478-746-9421 Office
478-960-4080 Cell
trip@fickling.com

Jonathan Schuemann
478-746-9421 Office
561-676-4633 Cell
jonathan@fickling.com



577 Mulberry St, Suite 1100
Macon, GA 31201
478.746.9421 Office
<https://commercial.fickling.com>

161± Acres For Sale

2000 North Jefferson Street

Milledgeville, GA 31061



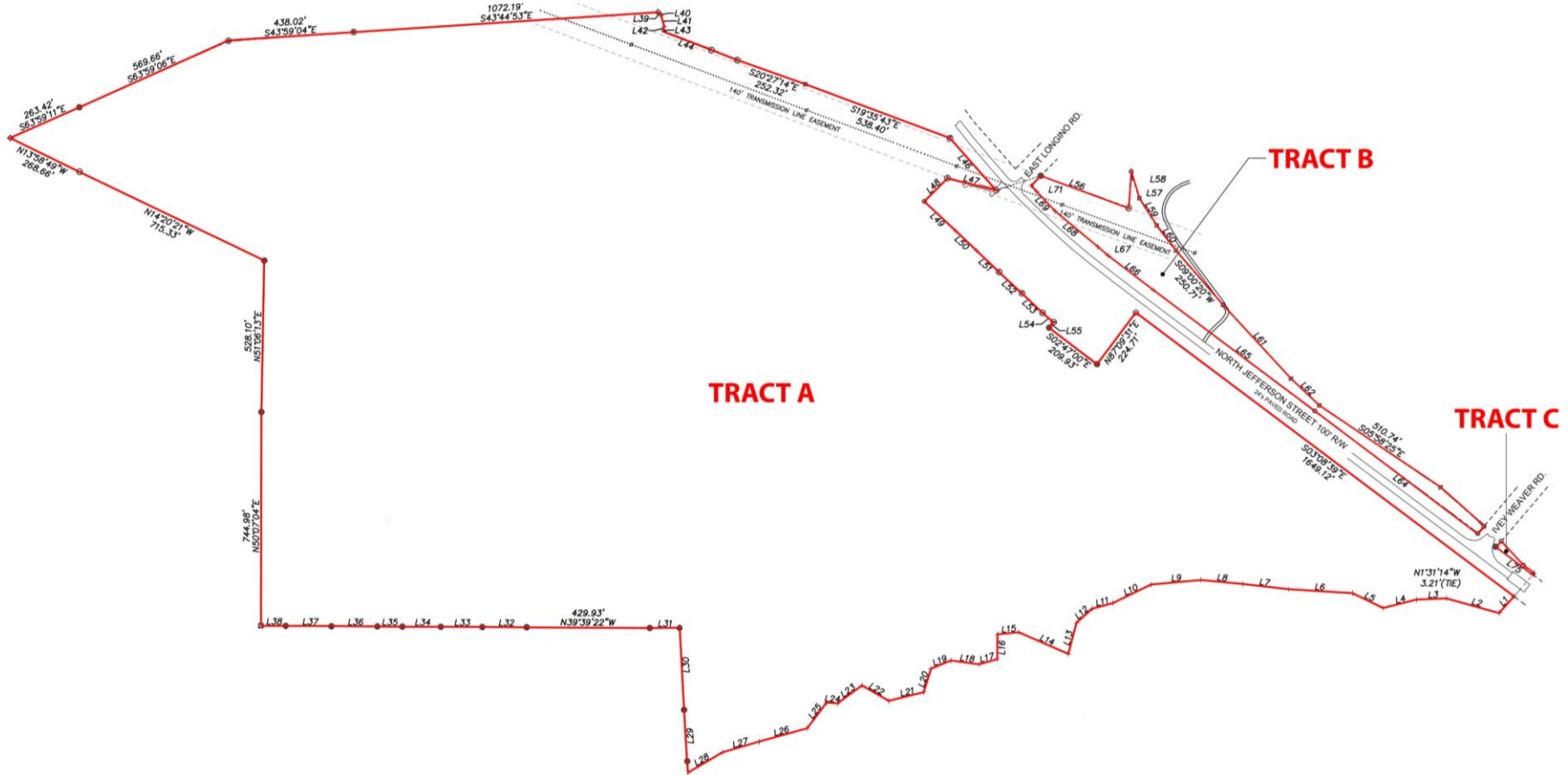
Summary

Area Info

Aerial

Survey

SURVEY



CONTACT

Patty Burns, CCIM, ALC
478-746-9421 Office
478-951-5100 Cell
patty@fickling.com

Trip Wilhoit, CCIM, ALC
478-746-9421 Office
478-960-4080 Cell
trip@fickling.com

Jonathan Schuemann
478-746-9421 Office
561-676-4633 Cell
jonathan@fickling.com



577 Mulberry St, Suite 1100
Macon, GA 31201
478.746.9421 Office
<https://commercial.fickling.com>