

# Downtown Macon Office Suites Available

804 Cherry Street  
Macon, GA 31201



Summary

Area Info

Photos

Floor Plans

Aerial

Site Map



## CONTACT

**Lan Heath**

478-746-9421 Office  
478-731-5899 Cell  
lheath@fickling.com



577 Mulberry St, Suite 1100  
Macon, GA 31201  
478.746.9421 Office  
<https://commercial.fickling.com>

This information is from resources deemed to be reliable and is subject to change without notice. No warranties or guarantees for accuracy are made by Fickling and Company.

## PROPERTY INFORMATION

### BUILDING

<b>Property Address:</b>	804 Cherry Street Macon, GA 31201
<b>County:</b>	Bibb
<b>Total Size:</b>	5,800 SF
<b>Available:</b>	2,020 SF
<b>Utilities:</b>	All Available
<b>Parking:</b>	Public and Private, 1 space per suite
<b>Ceiling Height:</b>	9'
<b>Year Built:</b>	1995

### SITE

<b>Site Size:</b>	0.18 Acres
<b>Parcel ID:</b>	Q074-0665
<b>Zoning:</b>	HR-3

<b>Demographics 2024</b>	<b>1 Mile</b>	<b>3 Miles</b>	<b>5 Miles</b>
Population	6,921	40,301	84,278
Avg HH Income	\$63,985	\$55,033	\$61,969
Median Age	33.8	34.8	35.0

### CONTACT

**Lan Heath**  
478-746-9421 Office  
478-731-5899 Cell  
lheath@fickling.com



577 Mulberry St, Suite 1100  
Macon, GA 31201  
478.746.9421 Office  
<https://commercial.fickling.com>

# Downtown Macon Office Suites Available

804 Cherry Street  
Macon, GA 31201



Summary

Area Info

Photos

Floor Plans

Aerial

Site Map

## AREA INFORMATION

### NOTES

Beautiful professional full service office suites in downtown historic district, ideal for professional or medical office use. All suites are furnished.

### LOCATION

Located on the edge of Macon's Central Business District. Convenient to I-75, I-16, Riverside Drive and multiple secondary roadways. Nearby businesses include Tina's Income Tax, AT&T, Macon City Auditorium, Atrium Health Navicent The Medical Center, Macon-Bibb Government Center, and the Bibb County Courthouse, as well as many restaurants & entertainment venues.



### CONTACT

**Lan Heath**  
478-746-9421 Office  
478-731-5899 Cell  
lheath@fickling.com



577 Mulberry St, Suite 1100  
Macon, GA 31201  
478.746.9421 Office  
<https://commercial.fickling.com>

# Downtown Macon Office Suites Available

804 Cherry Street  
Macon, GA 31201



Summary

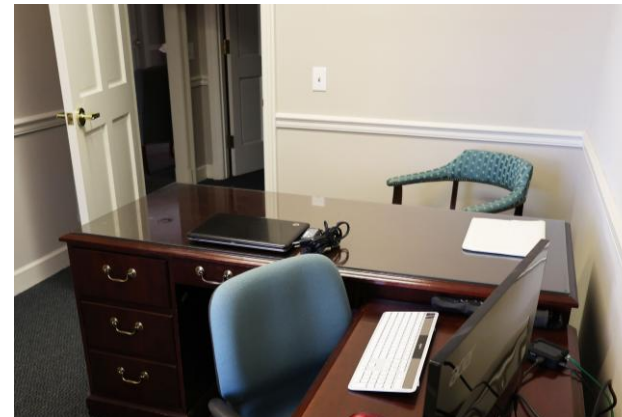
Area Info

Photos

Floor Plans

Aerial

Site Map



## CONTACT

**Lan Heath**  
478-746-9421 Office  
478-731-5899 Cell  
lheath@fickling.com

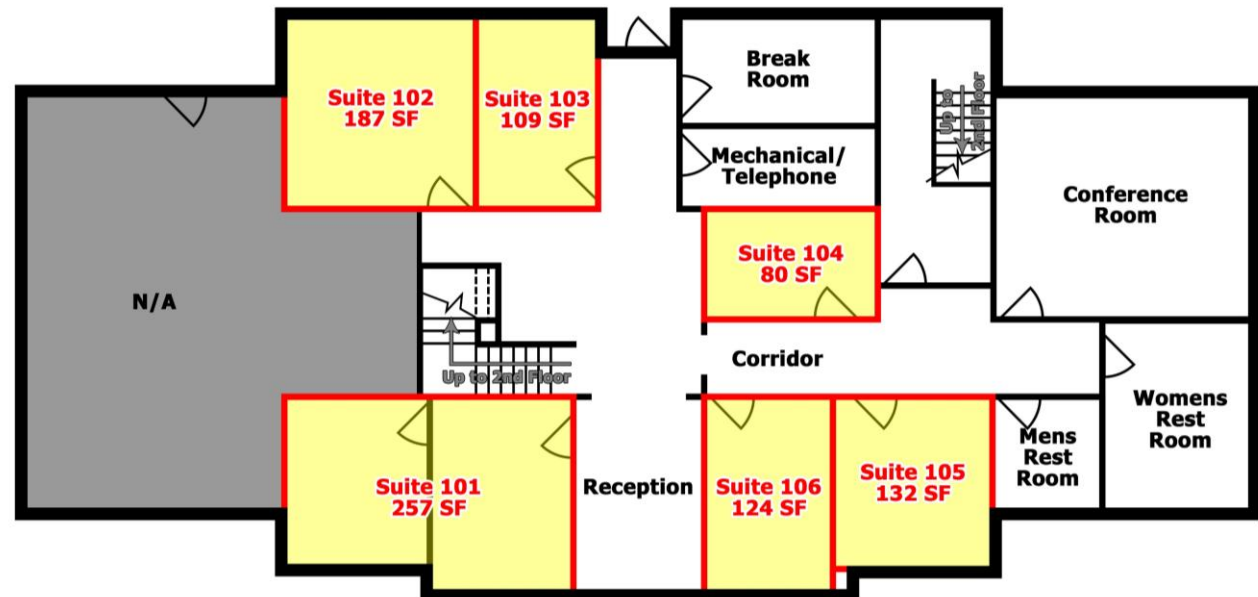


577 Mulberry St, Suite 1100  
Macon, GA 31201  
478.746.9421 Office  
<https://commercial.fickling.com>

**First Floor Suites**

Suite	SF	Monthly Rent
101	257	\$1,000
102	187	\$750
103	109	\$650
104	80	\$600
105	132	\$700
106	124	\$675

**Floor Plan - First Floor**



**CONTACT**

**Lan Heath**  
 478-746-9421 Office  
 478-731-5899 Cell  
[lheath@fickling.com](mailto:lheath@fickling.com)

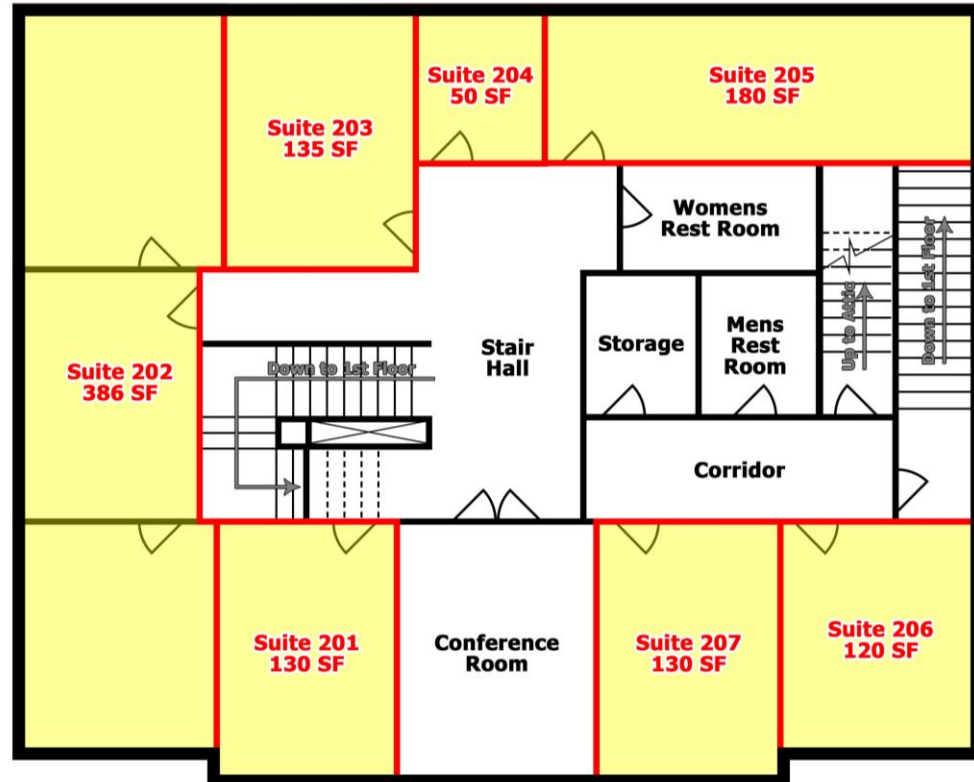


577 Mulberry St, Suite 1100  
 Macon, GA 31201  
 478.746.9421 Office  
<https://commercial.fickling.com>

**Second Floor Suites**

Suite	SF	Monthly Rent
201	130	\$650
202	386	\$1,800
203	135	\$650
204	50	\$400
205	180	\$800
206	120	\$650
207	130	\$650

**Floor Plan - Second Floor**



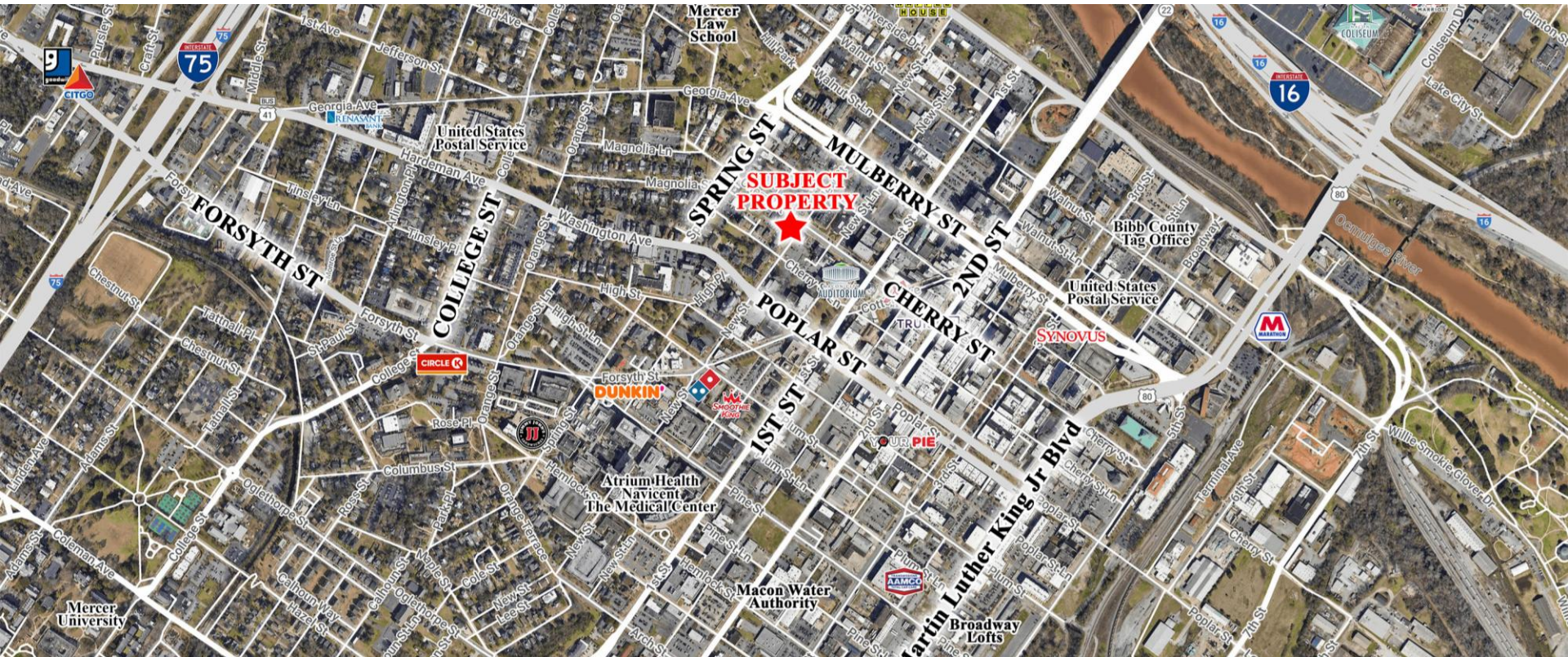
**CONTACT**

**Lan Heath**  
 478-746-9421 Office  
 478-731-5899 Cell  
 lheath@fickling.com



577 Mulberry St, Suite 1100  
 Macon, GA 31201  
 478.746.9421 Office  
<https://commercial.fickling.com>

AERIAL



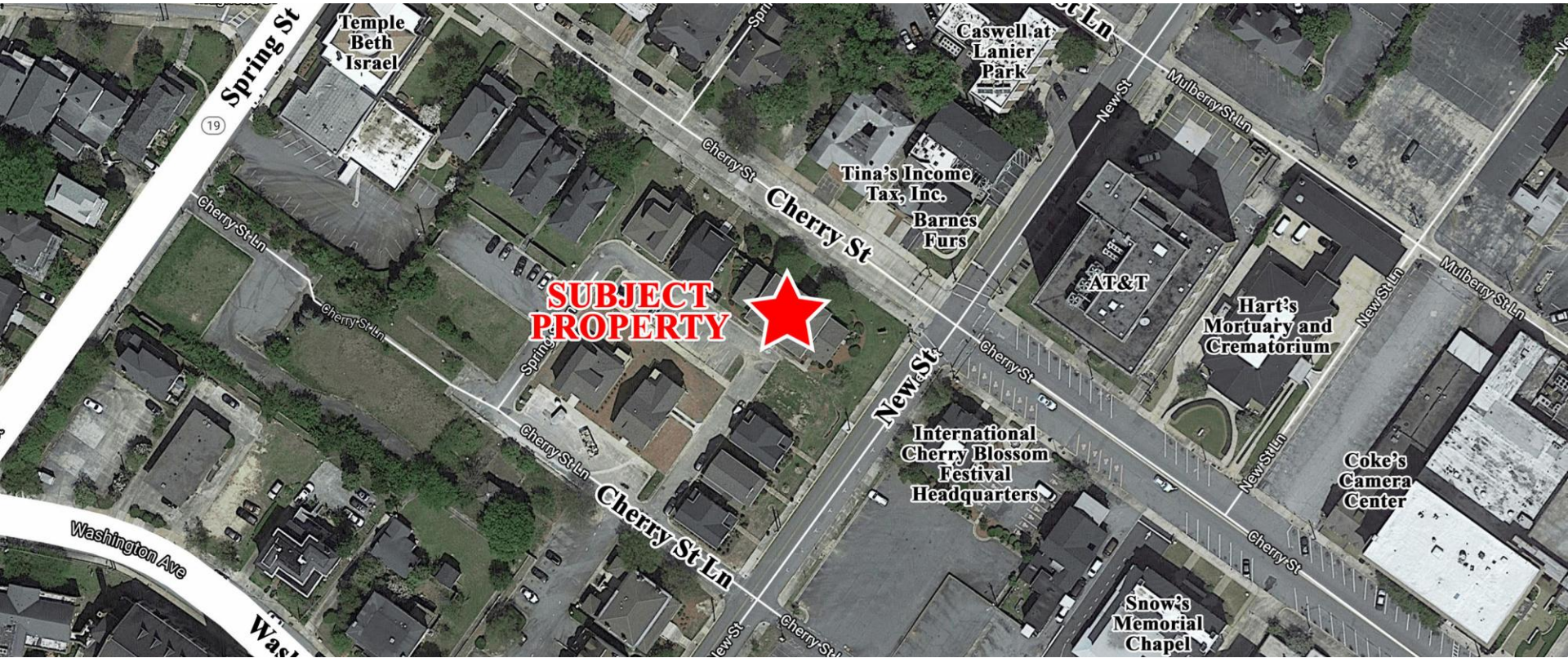
CONTACT

**Lan Heath**  
478-746-9421 Office  
478-731-5899 Cell  
lheath@fickling.com



577 Mulberry St, Suite 1100  
Macon, GA 31201  
478.746.9421 Office  
<https://commercial.fickling.com>

SITE MAP



CONTACT

Lan Heath  
478-746-9421 Office  
478-731-5899 Cell  
lheath@fickling.com



577 Mulberry St, Suite 1100  
Macon, GA 31201  
478.746.9421 Office  
<https://commercial.fickling.com>