

Office Warehouse For Lease

560 W. Martin Luther King Drive
Milledgeville, GA 31061



Lot Size:	7.23 acres
Building Size:	3,200 sf
Frontage:	500 ± ft
Utilities:	All available
Taxes:	\$2,707.88 (2021 est.)
Parking:	20
Topography:	Level
Year Built:	1993
Loading Docks:	1 dock high with roll up door
Traffic Count:	12,700 VPD on N Columbia Street
Neighbors:	Atrium Health Navicent Baldwin County Hospital, PSC Industries, LLC, Griffin Lumber & Hardware, CVS, Harbor Freight, Ollie's Bargain Outlet (under construction), and Georgia College & State University.
Notes:	Formerly ambulance services with sleeping quarters. Ideal location for service related company, office, medical office, veterinary office. Building has 9 offices, breakroom, 4 restrooms, storage area, 400 sf canopy area, 4 covered parking spaces, and a loading dock. Large parking area.



Lease Price: \$2,000 per Month NNN

**FOR MORE
INFORMATION
CONTACT**

Trip Wilhoit, CCIM, ALC
478-746-9421 (O)
478-960-4080 (C)
trip@fickling.com

Patty Burns, CCIM, ALC
478-746-9421 (O)
478-951-5100 (C)
patty@fickling.com

commercial.fickling.com

577 Mulberry St, Suite 1100 * P.O. Box 310 * Macon, GA 31202 | Phone (478) 746-9421 | Fax (478) 742-2015

This information is from resources deemed to be reliable, no warranties or guarantees for accuracy are made by Fickling and Company

Office Warehouse For Lease

560 W. Martin Luther King Drive
Milledgeville, GA 31061



PHOTOS



**FOR MORE
INFORMATION
CONTACT**

Trip Wilhoit, CCIM, ALC
478-746-9421 (O)
478-960-4080 (C)
trip@fickling.com

Patty Burns, CCIM, ALC
478-746-9421 (O)
478-951-5100 (C)
patty@fickling.com

commercial.fickling.com

577 Mulberry St, Suite 1100 * P.O. Box 310 * Macon, GA 31202 | Phone (478) 746-9421 | Fax (478) 742-2015

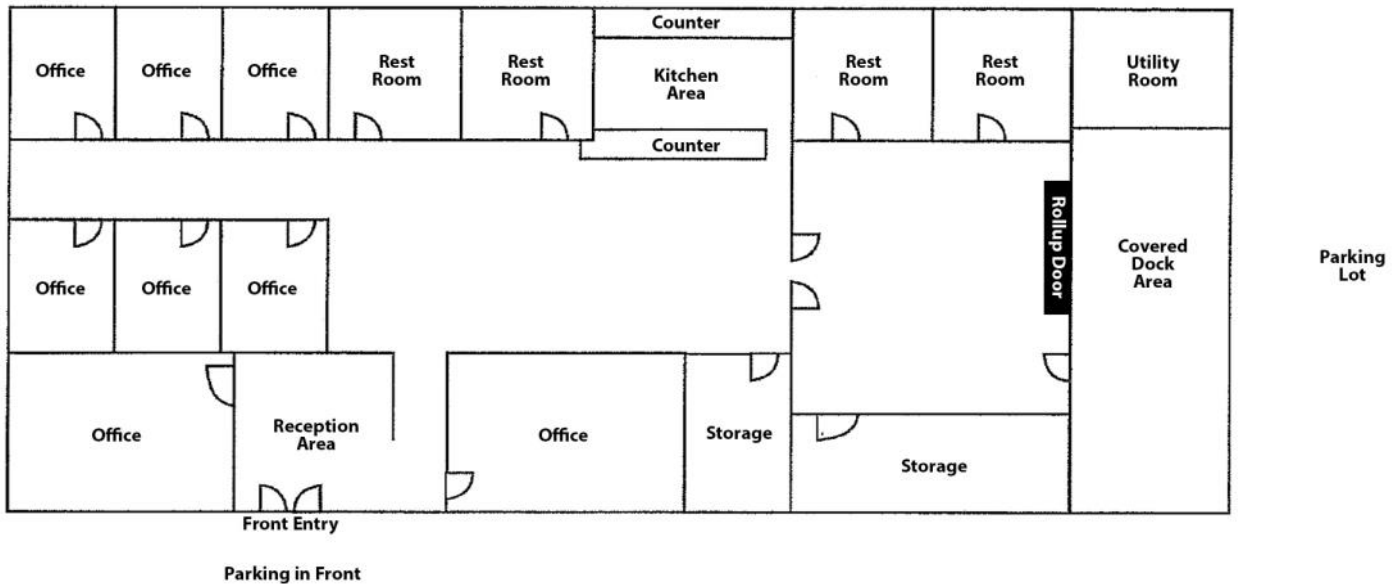
This information is from resources deemed to be reliable, no warranties or guarantees for accuracy are made by Fickling and Company

Office Warehouse For Lease

560 W. Martin Luther King Drive
Milledgeville, GA 31061



FLOOR PLAN



*All measurements and all calculations of area may not be to scale and are not guaranteed..

2021 Demographics	1 Mile	3 Mile	5 Mile
Population	6,433	20,197	29,816
Median Age	25.4	30.6	33.0
Average Household Income	\$30,728	\$46,01	\$52,324

**FOR MORE
INFORMATION
CONTACT**

Trip Wilhoit, CCIM, ALC
478-746-9421 (O)
478-960-4080 (C)
trip@fickling.com

Patty Burns, CCIM, ALC
478-746-9421 (O)
478-951-5100 (C)
patty@fickling.com

commercial.fickling.com

577 Mulberry St, Suite 1100 * P.O. Box 310 * Macon, GA 31202 | Phone (478) 746-9421 | Fax (478) 742-2015

This information is from resources deemed to be reliable, no warranties or guarantees for accuracy are made by Fickling and Company