

Industrial Warehouse Space For Lease
2501 Weaver Road
Macon, GA 31217



Summary

Area Info

Floor Plan

Aerial

Site Map

SUITE A



LEASE RATE: \$4.25/SF Modified Gross (\$15,940/Month)

CONTACT

Larry E Crumbley, CCIM, SIOR, CPM
478-746-9421 Office
478-737-3381 Cell
lcrumbley@fickling.com



577 Mulberry St, Suite 1100
Macon, GA 31201
478.746.9421 Office
<https://commercial.fickling.com>

Industrial Warehouse Space For Lease

2501 Weaver Road
Macon, GA 31217



Summary

Area Info

Floor Plan

Aerial

Site Map

PROPERTY INFORMATION

BUILDING

Property Address: 2501 Weaver Road
Macon, GA 31217

County: Bibb

Total Size: 264,372 SF

Year Built: 1982 - 2000

Fire Protection: Wet Sprinkler System

Building Features: Pre-galvanized steel panels and steel frames with partial brick

Ceiling Heights: 24' ceiling eave height

SITE

Site Size: 11.34 Acres

Parcel ID: V083-0002

Zoning: M-2

Demographics 2023	1 Mile	3 Miles	5 Miles
Population	484	6,600	30,785
Avg HH Income	\$64,950	\$55,799	\$54,860
Median Age	37.9	38.6	38.9

Suite	SF	Description	Rent/SF	Rent/Month	Other
A	45,000	Warehouse	\$4.25/SF	\$15,940/Month	Ground level and dock space with 3 dock doors. Approximately 1,200 SF office space. Built in 1982.

*Rents include taxes, insurance, and common area maintenance

CONTACT

Larry E Crumbley, CCIM, SIOR, CPM
478-746-9421 Office
478-737-3381 Cell
lcrumbley@fickling.com



577 Mulberry St, Suite 1100
Macon, GA 31201
478.746.9421 Office
<https://commercial.fickling.com>

Industrial Warehouse Space For Lease

2501 Weaver Road
Macon, GA 31217



Summary

Area Info

Floor Plan

Aerial

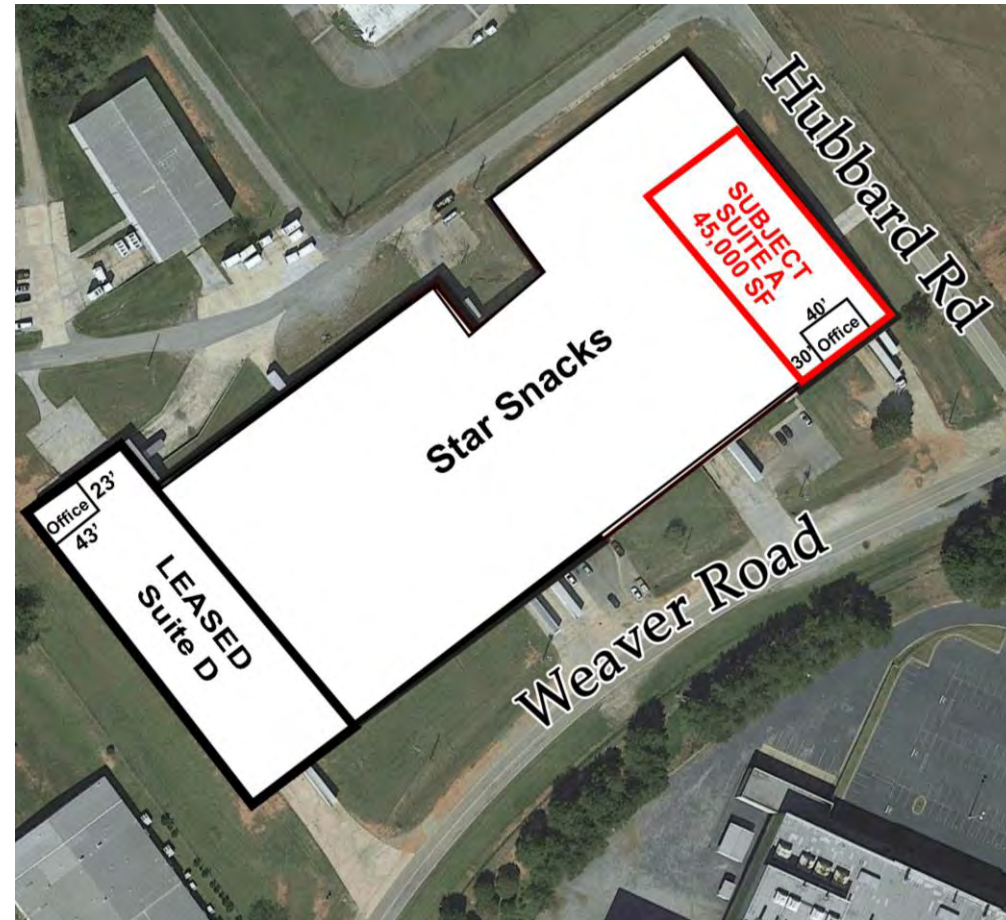
Site Map

SUITE INFORMATION

Suite A of this multi-tenant industrial property is now available! Suite is 45,000 SF and includes approximately 1,200 SF of office. Office space contains four (4) office areas, IT closet, HVAC and Janitor Storage closets, and one (1) restroom.

LOCATION INFORMATION

Located at the corner of Weaver Road and Hubbard Road, this property has excellent access to I-16, the major thoroughfare between Macon and Savannah. Neighbors in the area include the Downtown Macon Airport, YKK, GEICO, Georgia Forestry Commission, and Star Snacks.



CONTACT

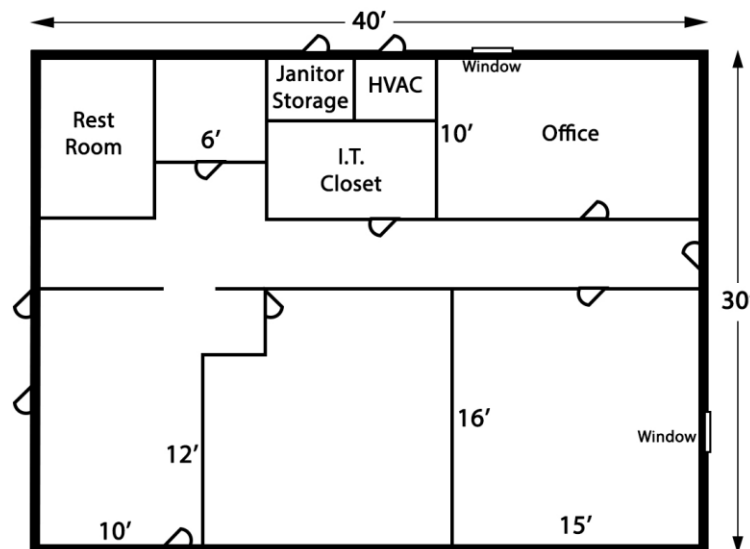
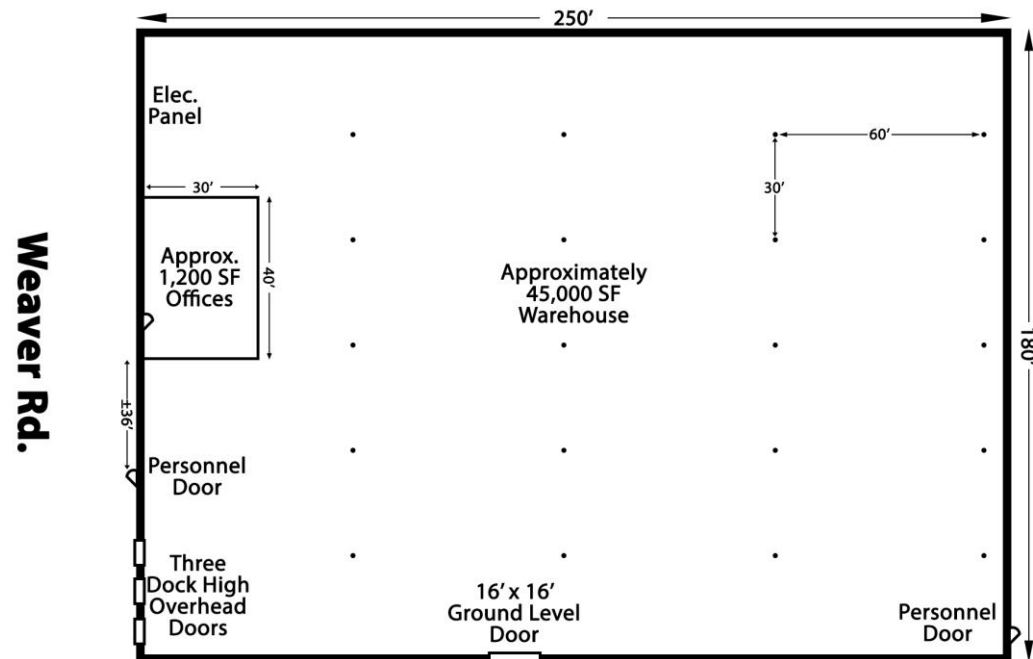
Larry E Crumbley, CCIM, SIOR, CPM
478-746-9421 Office
478-737-3381 Cell
lcrumbley@fickling.com



577 Mulberry St, Suite 1100
Macon, GA 31201
478.746.9421 Office
<https://commercial.fickling.com>

WAREHOUSE SPACE FLOOR PLAN

OFFICE SPACE FLOOR PLAN



Hubbard Rd.

*All measurements and all calculations of area are approximate and are not guaranteed

CONTACT

Larry E Crumbley, CCIM, SIOR, CPM
478-746-9421 Office
478-737-3381 Cell
lcrumbley@fickling.com



577 Mulberry St, Suite 1100
Macon, GA 31201
478.746.9421 Office
<https://commercial.fickling.com>

Industrial Warehouse Space For Lease

2501 Weaver Road
Macon, GA 31217



Summary

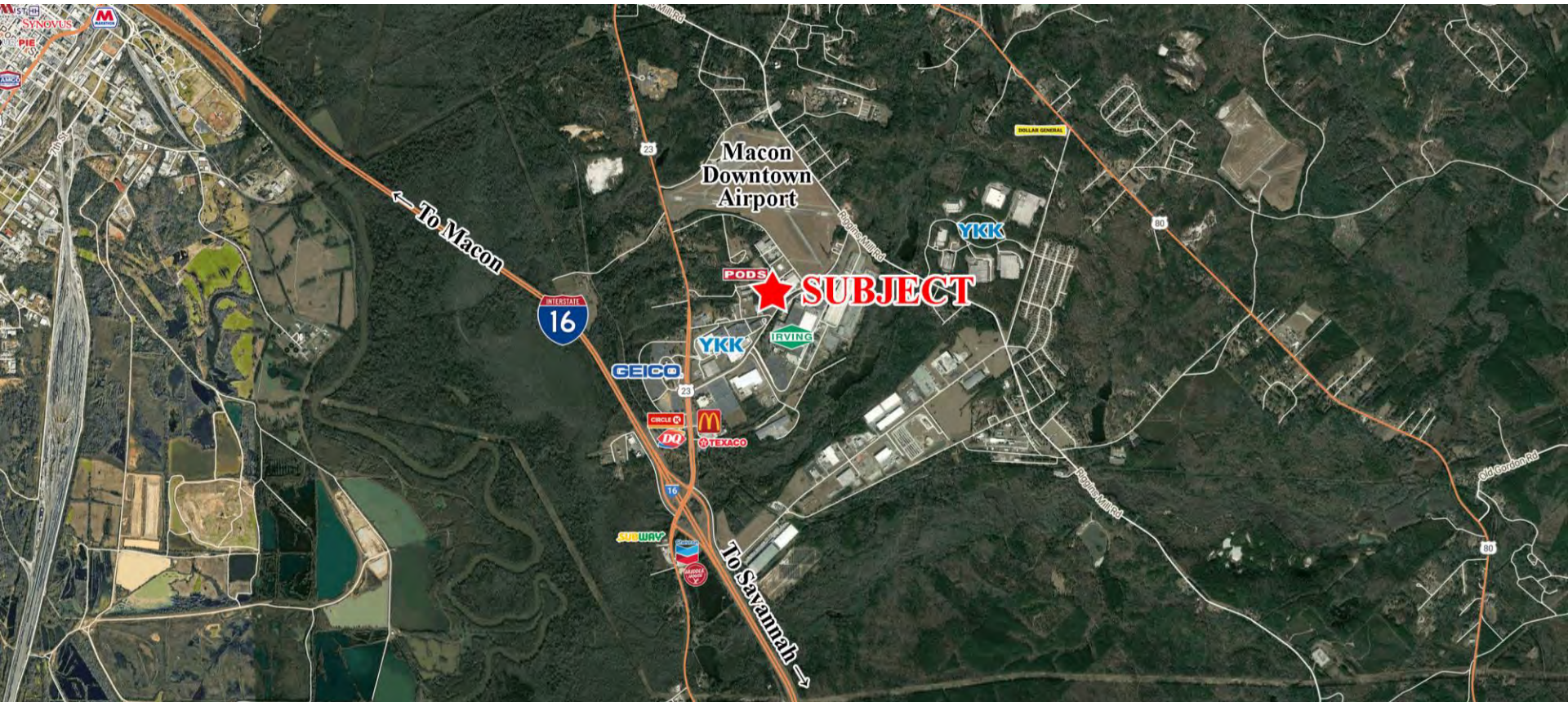
Area Info

Floor Plan

Aerial

Site Map

AERIAL



CONTACT

Larry E Crumbley, CCIM, SIOR, CPM
478-746-9421 Office
478-737-3381 Cell
lcrumbley@fickling.com



577 Mulberry St, Suite 1100
Macon, GA 31201
478.746.9421 Office
<https://commercial.fickling.com>

Industrial Warehouse Space For Lease

2501 Weaver Road

Macon, GA 31217



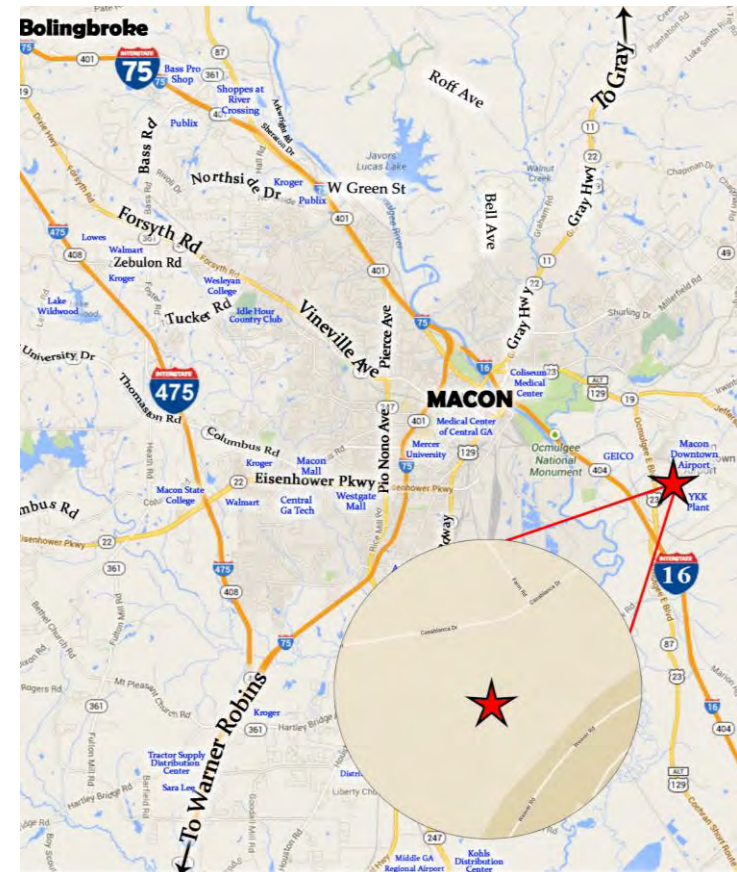
Summary

Area Info

Floor Plan

Aerial

Site Map



← COUNTY AREA MAP

STATE AREA MAP →



CONTACT

Larry E Crumbley, CCIM, SIOR, CPM
478-746-9421 Office
478-737-3381 Cell
lcrumbley@fickling.com



577 Mulberry St, Suite 1100
Macon, GA 31201
478.746.9421 Office
<https://commercial.fickling.com>