

Warehouse Space with Truck Yard & Maintenance Building

2255 Gray Highway
Macon, GA 31211



Summary

Improvements

Photos

Aerial

Site Map



CONTACT

Lan Heath
478-746-9421 Office
478-731-5899 Cell
lheath@fickling.com

Larry E Crumbley, CCIM, SIOR, CPM
478-746-9421 Office
478-737-3381 Cell
lcrumbley@fickling.com



577 Mulberry St, Suite 1100
Macon, GA 31201
478.746.9421 Office
<https://commercial.fickling.com>

PROPERTY INFORMATION

BUILDING:

Property Address: 2255 Gray Highway
Macon, GA 31211

County: Bibb

Total Size: 20,276 SF

Ceiling Height: Office Area – 9’ ft

Cooler – 10’ ft

Service Building – 16’ ft

Warehouse, Freezer & Loading Docks – 13’ ft

Utilities: Municipal water & sewer

Taxes: \$12,690.35 (2023)

Traffic Count: 20,704 Vehicles per day

SITE:

Acres: 4.92 AC

Parcel ID: S053-0015

Zoning: C-2

SQUARE FOOTAGE ITEMIZATION:

Office Warehouse Space: 6,886 SF

Rear Service Building: 5,120 SF

Cooler Space (No Equipment): 3,000 SF

Freezer Space (No Equipment): 5,270 SF

Total Building Area: 20,276 SF

Offering Price: \$950,000

REDUCED PRICE: \$595,000

Lease Price: \$6,000/Month NNN

CONTACT

Lan Heath
478-746-9421 Office
478-731-5899 Cell
lheath@fickling.com

Larry E Crumbley, CCIM, SIOR, CPM
478-746-9421 Office
478-737-3381 Cell
lcrumbley@fickling.com



577 Mulberry St, Suite 1100
Macon, GA 31201
478.746.9421 Office
<https://commercial.fickling.com>

PROPERTY INFORMATION

NOTES:

- Freezer and cooler equipment has been removed.
- Lot is mostly paved and fenced, with controlled access. Municipal water and sewer is available to site.
- Ideal for use as semi-truck trailer or other outdoor storage.



LOCATION:

Located on Gray Highway, which is the main corridor between Macon, Gray, and Milledgeville. Property is 3 miles from the I-16 and I-75 interchange, allowing for easy access to the main thoroughfares from Macon to Savannah (I-16) and Atlanta (I-75).

Demographics 2024	1 Mile	3 Miles	5 Miles
Population	1,719	19,942	56,967
Avg HH Income	\$67,886	\$55,416	\$67,922
Median Age	35.2	37.0	36.1

CONTACT

Lan Heath
 478-746-9421 Office
 478-731-5899 Cell
 lheath@fickling.com

Larry E Crumbley, CCIM, SIOR, CPM
 478-746-9421 Office
 478-737-3381 Cell
 lcrumbley@fickling.com



577 Mulberry St, Suite 1100
 Macon, GA 31201
 478.746.9421 Office
<https://commercial.fickling.com>

Warehouse Space with Truck Yard & Maintenance Building

2255 Gray Highway
Macon, GA 31211



Summary

Improvements

Photos

Aerial

Site Map



Dry Storage



Loading Dock



Rear Service Building



Rear Loading Area

CONTACT

Lan Heath
478-746-9421 Office
478-731-5899 Cell
lheath@fickling.com

Larry E Crumbley, CCIM, SIOR, CPM
478-746-9421 Office
478-737-3381 Cell
lcrumbley@fickling.com



577 Mulberry St, Suite 1100
Macon, GA 31201
478.746.9421 Office
<https://commercial.fickling.com>

Warehouse Space with Truck Yard & Maintenance Building

2255 Gray Highway
Macon, GA 31211



Summary

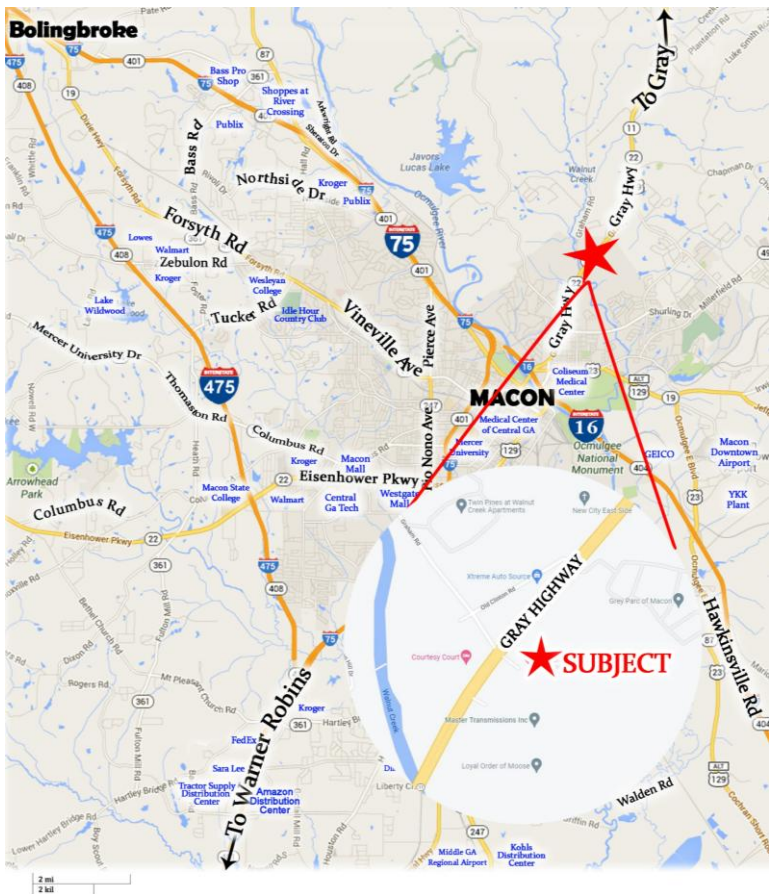
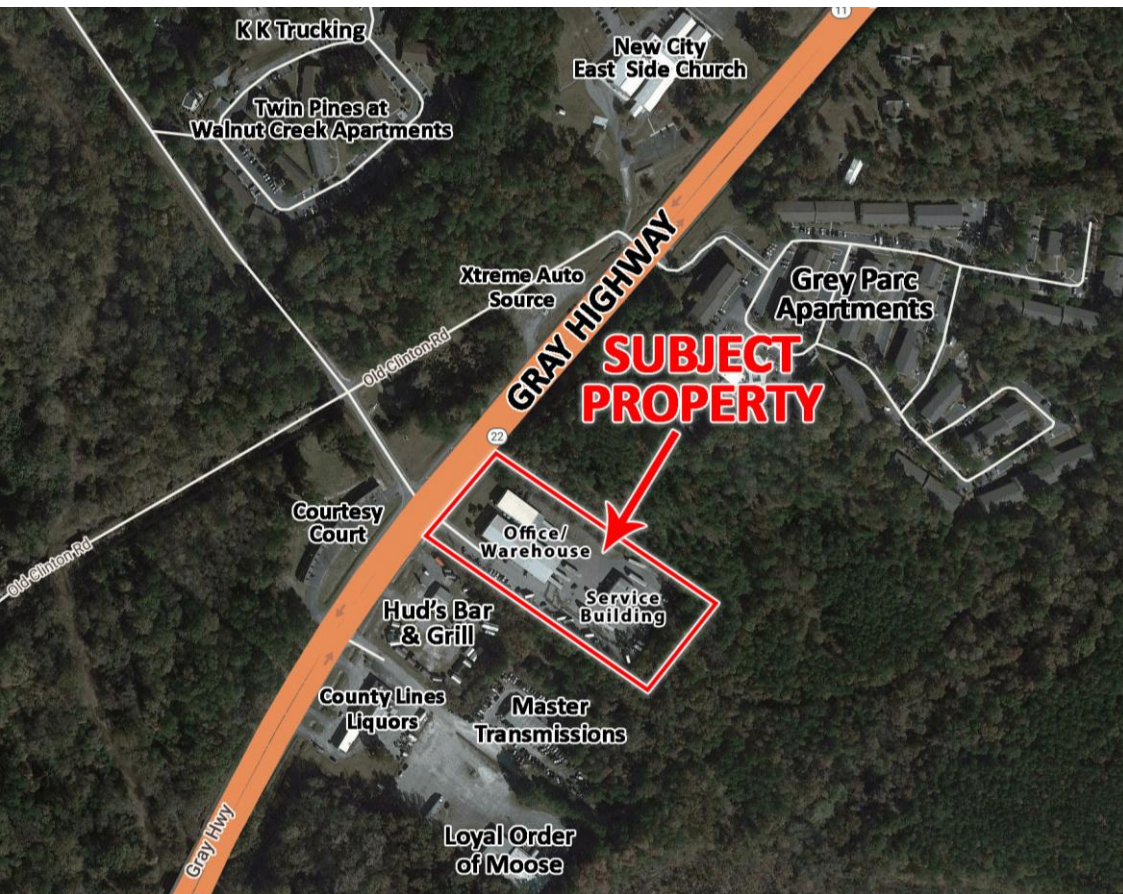
Improvements

Photos

Aerial

Site Map

AERIAL



CONTACT

Lan Heath
478-746-9421 Office
478-731-5899 Cell
lheath@fickling.com

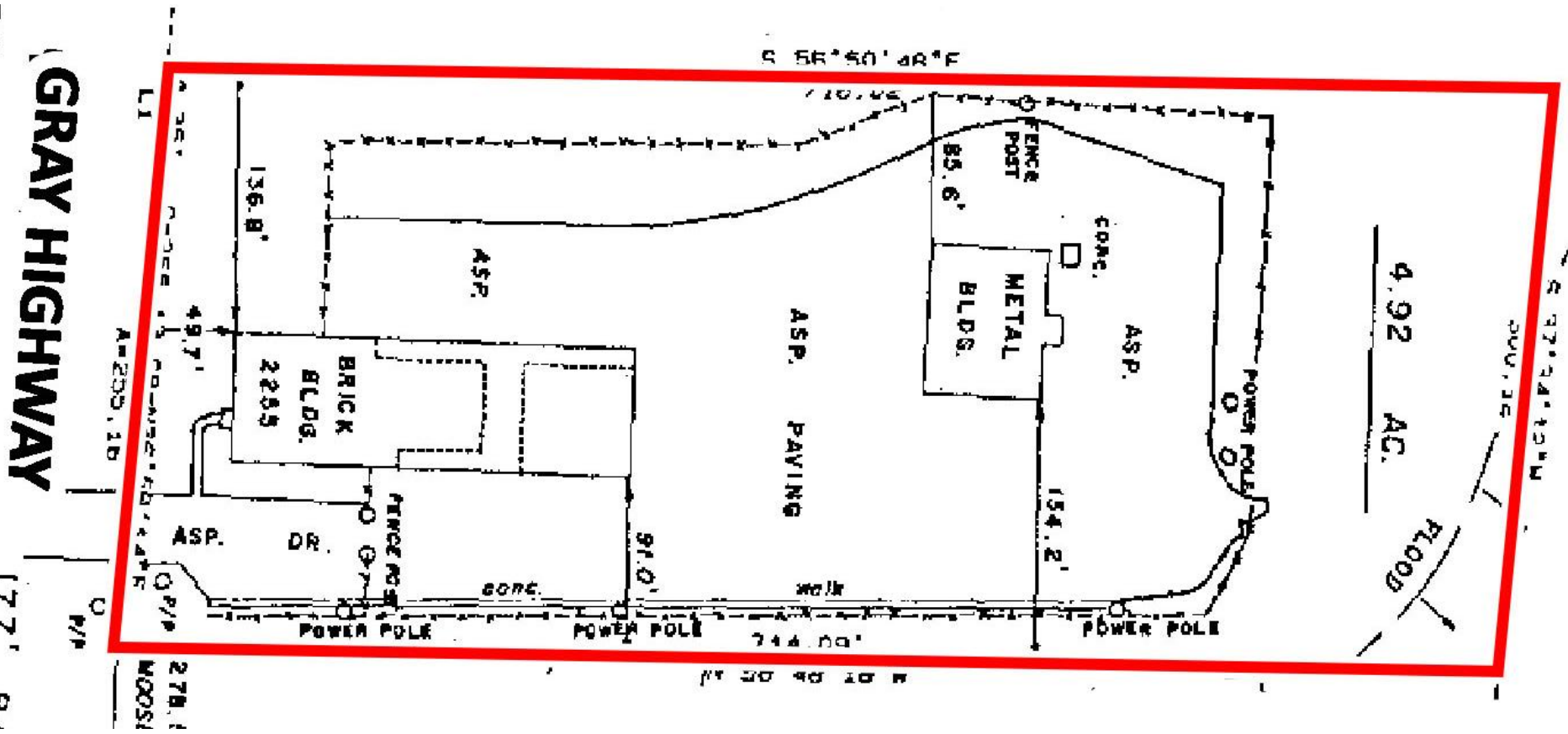
Larry E Crumbley, CCIM, SIOR, CPM
478-746-9421 Office
478-737-3381 Cell
lcrumbley@fickling.com



577 Mulberry St, Suite 1100
Macon, GA 31201
478.746.9421 Office
<https://commercial.fickling.com>

This information is from resources deemed to be reliable and is subject to change without notice. No warranties or guarantees for accuracy are made by Fickling and Company.

SITE MAP



CONTACT

Lan Heath
 478-746-9421 Office
 478-731-5899 Cell
 lheath@fickling.com

Larry E Crumbley, CCIM, SIOR, CPM
 478-746-9421 Office
 478-737-3381 Cell
 lcrumbley@fickling.com



577 Mulberry St, Suite 1100
 Macon, GA 31201
 478.746.9421 Office
<https://commercial.fickling.com>