

Renaissance Park Formerly Central State Hospital Campus

Nursing Home Center - VACANT SINCE 2008

480 Shop Road

Milledgeville, GA (Baldwin County)



Summary

Photos

Floor Plan

Aerial

Site Map



REDUCED PRICE: \$200,000

CONTACT

Patty Burns, CCIM, ALC
478-746-9421 Office
478-951-5100 Cell
patty@fickling.com

Trip Wilhoit, CCIM, ALC
478-746-9421 Office
478-960-4080 Cell
trip@fickling.com



577 Mulberry St, Suite 1100
Macon, GA 31201
478.746.9421 Office
<https://commercial.fickling.com>

This information is from resources deemed to be reliable and is subject to change without notice. No warranties or guarantees for accuracy are made by Fickling and Company.

Renaissance Park Formerly Central State Hospital Campus

Nursing Home Center - VACANT SINCE 2008

480 Shop Road

Milledgeville, GA (Baldwin County)



Summary

Photos

Floor Plan

Aerial

Site Map

PROPERTY INFORMATION

BUILDING

Property Address: 480 Shop Road
Milledgeville, GA 31061

County: Baldwin

Total Size: 26,370 SF
Building vacant since 2008

Utilities: All available

Sprinklered: Yes

Year Built: 1939

SITE

Site Size: 5.7± Acre

Location: Property located in Renaissance Park formerly known as Central State Hospital Campus in Milledgeville, GA. Conveniently located near Vinson Highway, 28 miles to I-75/I-16, and 34 miles to I-20.

Demographics 2025	1 Mile	3 Miles	5 Miles
Population	2,266	15,537	25,808
Avg HH Income	\$51,314	\$50,948	\$69,901
Median Age	37.9	32.4	33.1

REDUCED PRICE: \$200,000
~~SALE PRICE: \$795,000~~

CONTACT

Patty Burns, CCIM, ALC
478-746-9421 Office
478-951-5100 Cell
patty@fickling.com

Trip Wilhoit, CCIM, ALC
478-746-9421 Office
478-960-4080 Cell
trip@fickling.com



577 Mulberry St, Suite 1100
Macon, GA 31201
478.746.9421 Office
<https://commercial.fickling.com>

Renaissance Park Formerly Central State Hospital Campus

Nursing Home Center - VACANT SINCE 2008

480 Shop Road
Milledgeville, GA (Baldwin County)



Summary

Photos

Floor Plan

Aerial

Site Map



CONTACT

Patty Burns, CCIM, ALC
478-746-9421 Office
478-951-5100 Cell
patty@fickling.com

Trip Wilhoit, CCIM, ALC
478-746-9421 Office
478-960-4080 Cell
trip@fickling.com



577 Mulberry St, Suite 1100
Macon, GA 31201
478.746.9421 Office
<https://commercial.fickling.com>

Renaissance Park Formerly Central State Hospital Campus

Nursing Home Center - VACANT SINCE 2008

480 Shop Road

Milledgeville, GA (Baldwin County)



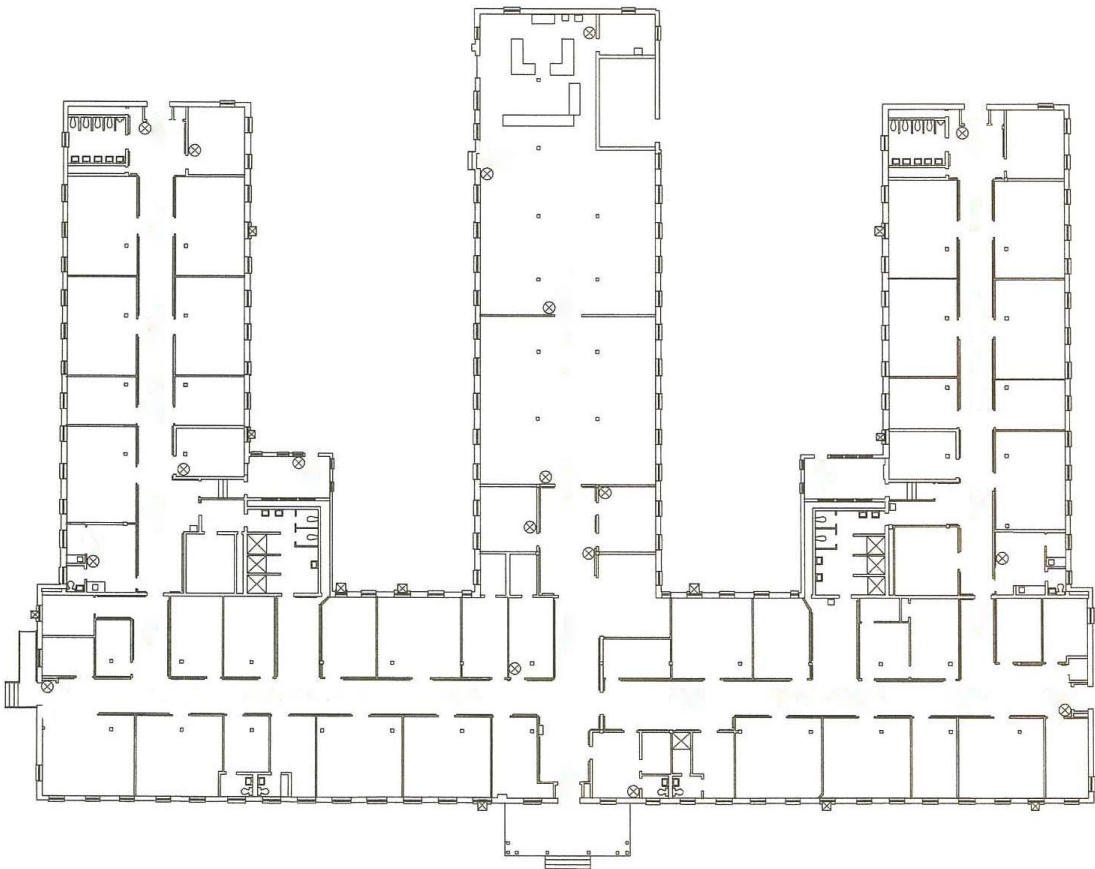
Summary

Photos

Floor Plan

Aerial

Site Map



CONTACT

Patty Burns, CCIM, ALC
478-746-9421 Office
478-951-5100 Cell
patty@fickling.com

Trip Wilhoit, CCIM, ALC
478-746-9421 Office
478-960-4080 Cell
trip@fickling.com



577 Mulberry St, Suite 1100
Macon, GA 31201
478.746.9421 Office
<https://commercial.fickling.com>

Renaissance Park Formerly Central State Hospital Campus

Nursing Home Center - VACANT SINCE 2008

480 Shop Road

Milledgeville, GA (Baldwin County)



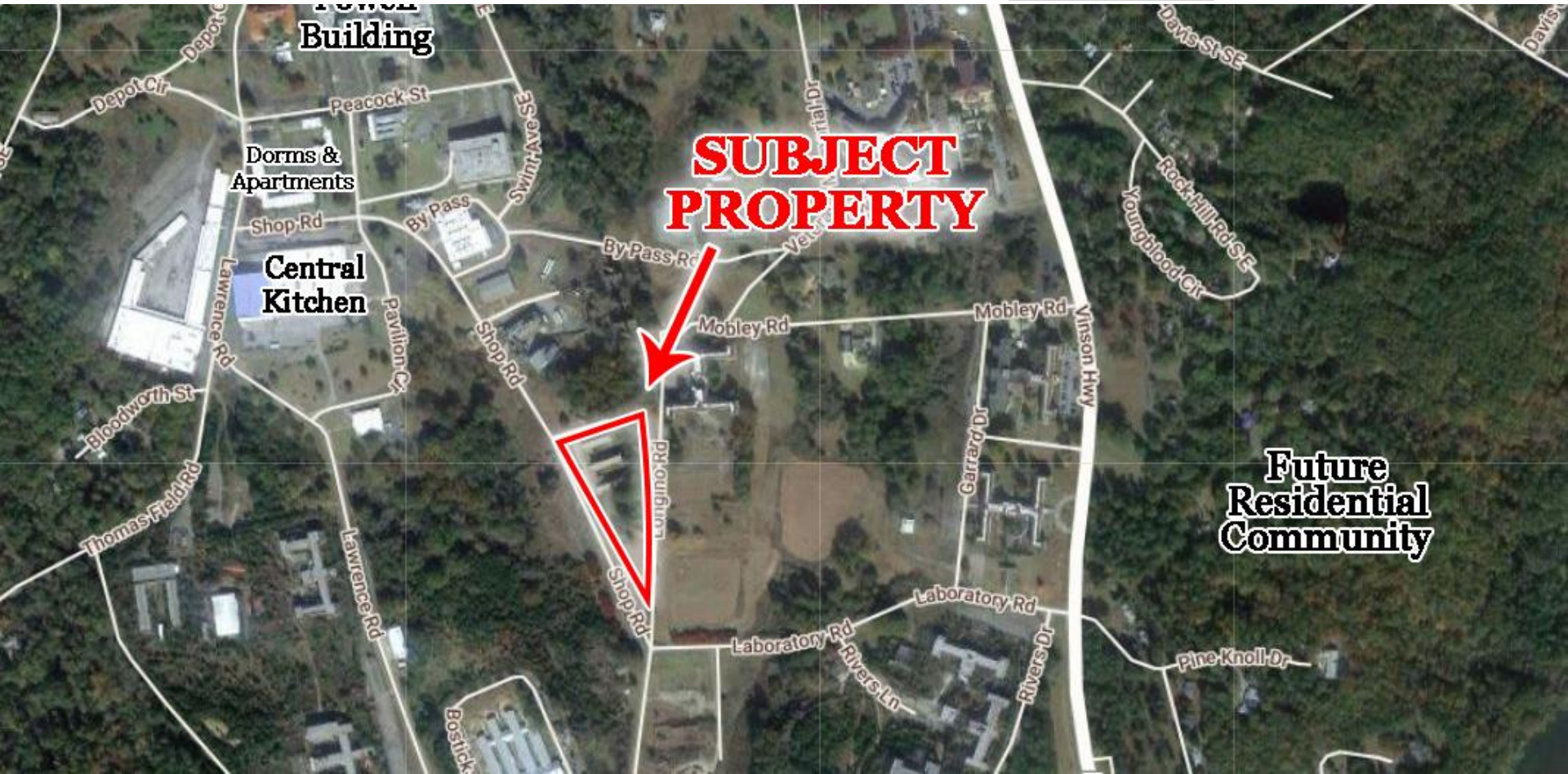
Summary

Photos

Floor Plan

Aerial

Site Map



CONTACT

Patty Burns, CCIM, ALC
478-746-9421 Office
478-951-5100 Cell
patty@fickling.com

Trip Wilhoit, CCIM, ALC
478-746-9421 Office
478-960-4080 Cell
trip@fickling.com



577 Mulberry St, Suite 1100
Macon, GA 31201
478.746.9421 Office
<https://commercial.fickling.com>

Renaissance Park Formerly Central State Hospital Campus

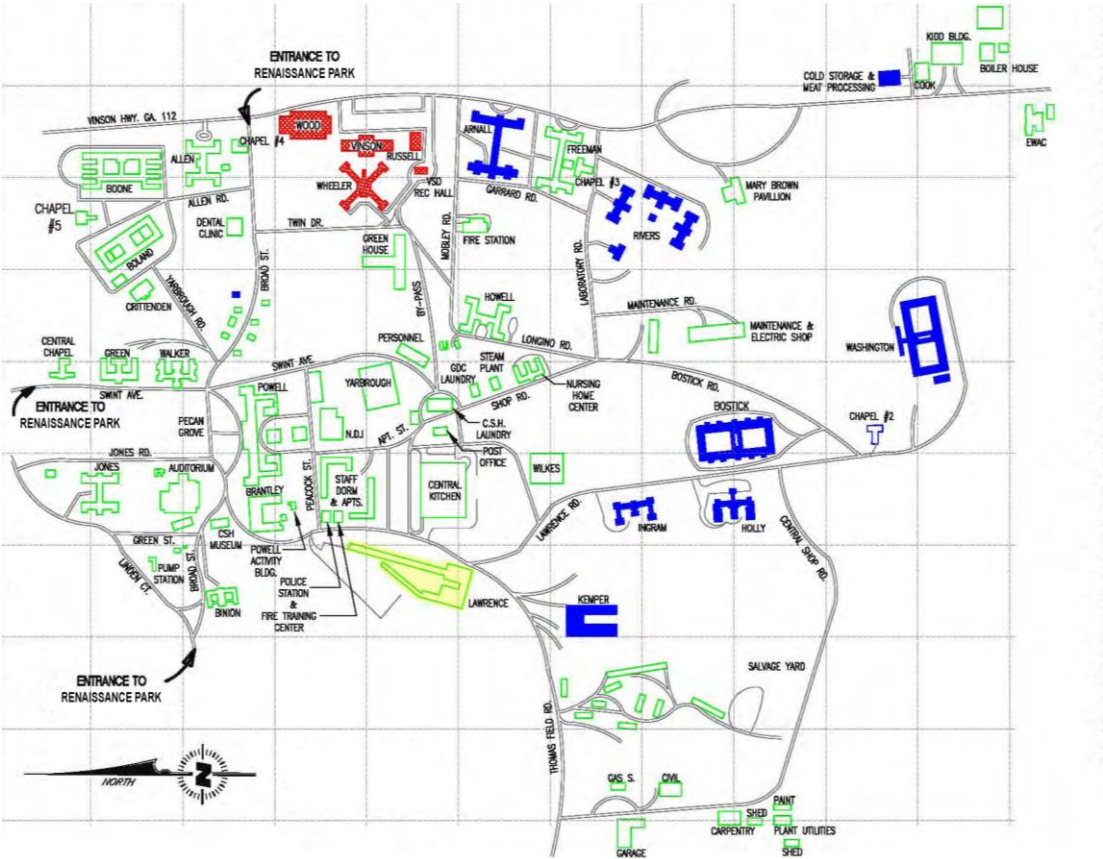
Nursing Home Center - VACANT SINCE 2008

480 Shop Road
Milledgeville, GA (Baldwin County)



- Summary
- Area Info
- Photos
- Aerial
- Site Map

Renaissance Park Site Map



CONTACT

Patty Burns, CCIM, ALC
478-746-9421 Office
478-951-5100 Cell
patty@fickling.com

Trip Wilhoit, CCIM, ALC
478-746-9421 Office
478-960-4080 Cell
trip@fickling.com



577 Mulberry St, Suite 1100
Macon, GA 31201
478.746.9421 Office
<https://commercial.fickling.com>