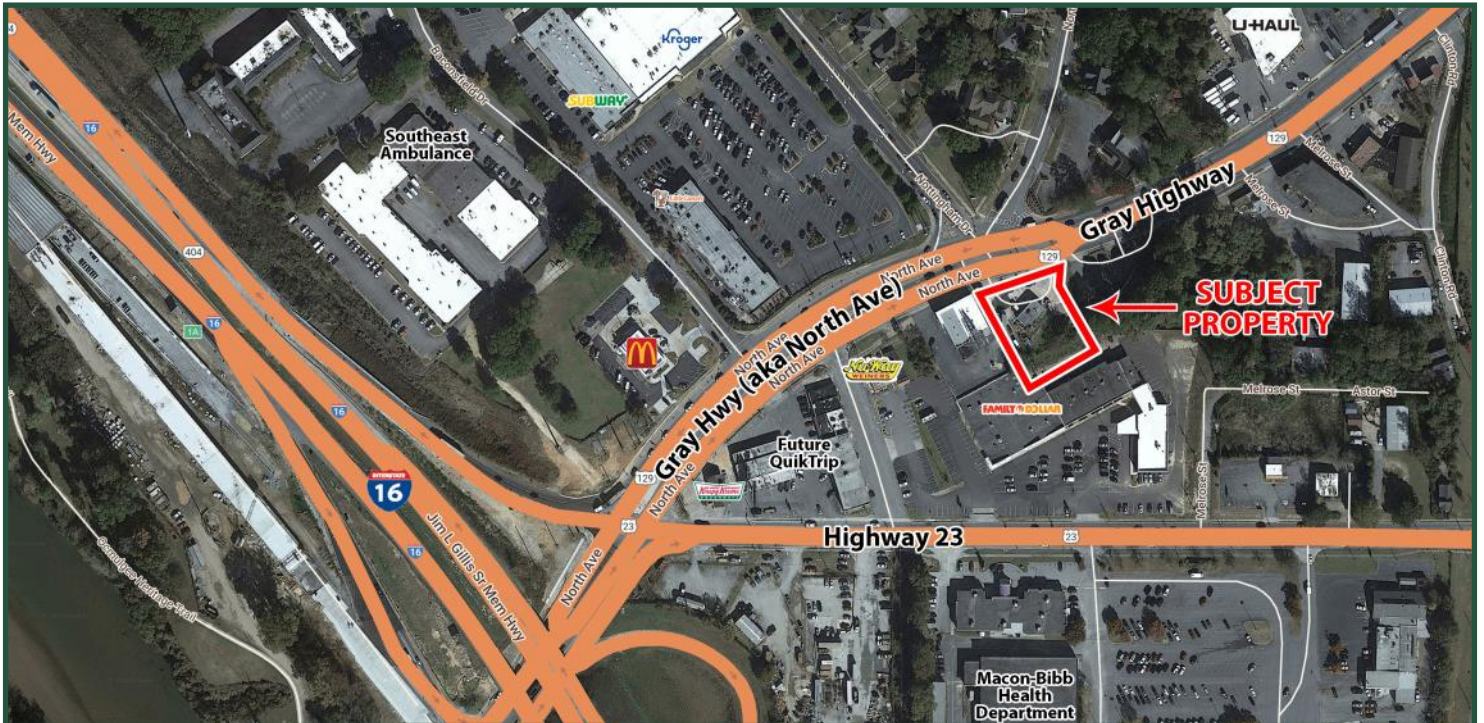


Former Shop/Service Center

705 Gray Highway

Macon, GA 31211



Building Size: 1,300 SF

Lot Size: 0.69 AC

Frontage: 170'

Curb Cuts: 2

Utilities: All available

Taxes: \$2,740.70 (2021 est.)

Zoning: C-4

Year Built: 1955, remodeled 1990

Traffic Count: 40,000 per day on Gray Highway/North Avenue

Notes: Property is located at the high traffic signalized intersection of Gray Highway (aka North Avenue) and Nottingham Drive. Convenient to Downtown Macon, I-16, and I-75. Tanks were removed in August 2019, a no further action letter is available upon request.

Neighbors: Kroger, U-Haul, QuikTrip (coming soon), Truist Bank, Macon-Bibb Health Department, Macon Coliseum, Piedmont Health Macon, McDonalds, Taco Bell, Wendy's, Arby's, Hardees, and many other restaurants and retail shops.

SALE PRICE: \$575,000

**FOR MORE
INFORMATION
CONTACT**

Trip Wilhoit, CCIM, ALC
478-746-9421 (O)
478-960-4080 (C)
trip@fickling.com

Patty Burns, CCIM, ALC
478-746-9421 (O)
478-951-5100 (C)
patty@fickling.com

commercial.fickling.com | georgiacommercialrealestate.net

577 Mulberry St, Suite 1100 * P.O. Box 310 * Macon, GA 31202 | Phone (478) 746-9421 | Fax (478) 742-2015

This information is from resources deemed to be reliable, no warranties or guarantees for accuracy are made by Fickling and Company

Former Shop/Service Center
705 Gray Highway
Macon, GA 31211

AERIAL



2021 Demos	1 mile	3 mile	5 mile
Population	5,912	37,106	78,576
Median Age	35.2	35.9	36.2
Avg. HHI	\$42,656	\$45,582	\$49,096

**FOR MORE
INFORMATION
CONTACT**

Trip Wilhoit, CCIM, ALC
478-746-9421 (O)
478-960-4080 (C)
trip@fickling.com

Patty Burns, CCIM, ALC
478-746-9421 (O)
478-951-5100 (C)
patty@fickling.com

commercial.fickling.com | georgiacommercialrealestate.net

577 Mulberry St, Suite 1100 * P.O. Box 310 * Macon, GA 31202 | Phone (478) 746-9421 | Fax (478) 742-2015

This information is from resources deemed to be reliable, no warranties or guarantees for accuracy are made by Fickling and Company