

Land - Federal Opportunity Zone

330 East Walton Street
Milledgeville, GA 31061



- Lot Size:** 8.11 AC
Frontage: 360' - E Hall Street
340' - E Walton Street
Zoning: SFR-2 (Single Family Residential 2)
Utilities: All available
Property Taxes: \$14,109.48 (2022 est. for market value of \$990,000)
Topography: Flat
Notes: Located in a Federal Opportunity Zone. This site was the previous home to Carver High School, and then to Carver Elementary School. The buildings were torn down in 2013. Uses include apartments, service company, tractor trailer parking, or park activity/ball field area.
Location: Convenient to downtown Milledgeville and the Oconee River. Neighbors include New City Church, Exxon, Beckham's Used Cars, Ivey's Tire Service, Fowler Flemister Concrete, Georgia College & State University, and Georgia Military College.

Sale Price: \$349,000

**FOR MORE
INFORMATION
CONTACT**

Trip Wilhoit, CCIM, ALC
478-746-9421 (O)
478-960-4080 (C)
trip@fickling.com

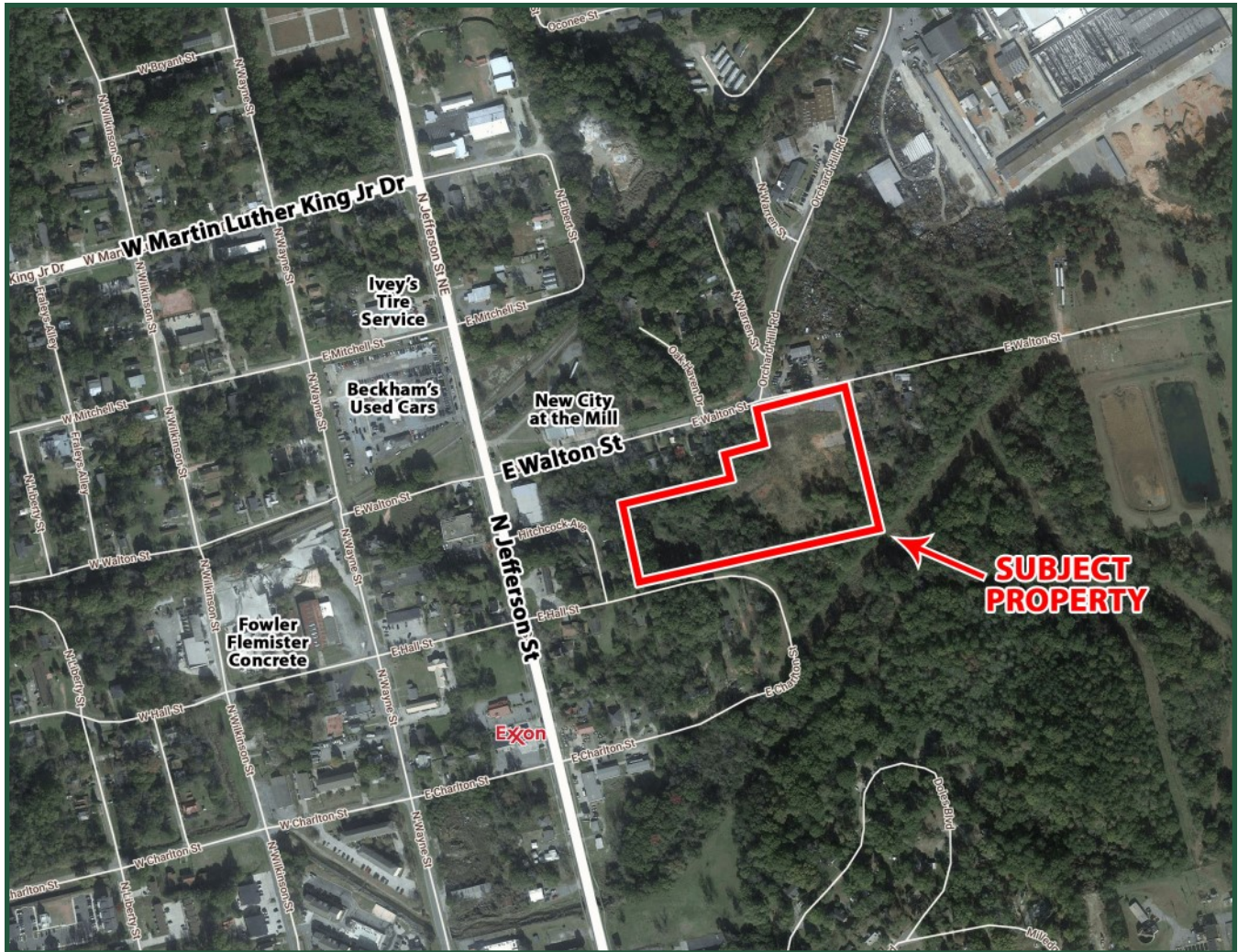
Patty Burns, CCIM, ALC
478-746-9421 (O)
478-951-5100 (C)
patty@fickling.com

commercial.fickling.com | georgiacommercialrealestate.net

577 Mulberry St, Suite 1100 * P.O. Box 310 * Macon, GA 31202 | Phone (478) 746-9421 | Fax (478) 742-2015

This information is from resources deemed to be reliable, no warranties or guarantees for accuracy are made by Fickling and Company

Land - Federal Opportunity Zone
 330 East Walton Street
 Milledgeville, GA 31061



2023 Demos	3 mile	5 mile	10 mile
Population	19,513	30,048	45,637
Median Age	32.1	34.9	37.9
Avg. HHI	\$90,800	\$90,784	\$94,101

**FOR MORE
 INFORMATION
 CONTACT**

Trip Wilhoit, CCIM, ALC
 478-746-9421 (O)
 478-960-4080 (C)
 trip@fickling.com

Patty Burns, CCIM, ALC
 478-746-9421 (O)
 478-951-5100 (C)
 patty@fickling.com

commercial.fickling.com | georgiacommercialrealestate.net

577 Mulberry St, Suite 1100 * P.O. Box 310 * Macon, GA 31202 | Phone (478) 746-9421 | Fax (478) 742-2015

This information is from resources deemed to be reliable, no warranties or guarantees for accuracy are made by Fickling and Company