

**FOR SALE**

**Hospice Care/Potential Group Home Facility**  
**504 Parker Dairy Road**  
**Dublin, GA 31021**

 **FICKLING  
& COMPANY**  
A Full Service Real Estate Company  
[commercial.fickling.com](http://commercial.fickling.com)



**Building Size:** ± 8,000 SF

**Lot Size:** 5 Acres

**Utilities:** All available (HVAC, Water, Electric, and Plumbing)

**Year Built:** 2008

**Zoning:** No zoning, located in Laurens County

**Taxes:** \$6,871.54 ( Est. 2022)

**Parking:** 30± paved parking spaces

**Neighbors:** Surrounding neighbors include Allen's Heating and Cooling, Lauren Co Refuse Collection Center, Laurens Co Animal Medical Clinic, Dublin Middle School, and many other retailers, restaurants, and offices.

**Sale Price: \$1,800,000**

**FOR MORE  
INFORMATION  
CONTACT**

**Lan Heath**, Commercial Sales & Leasing  
478-731-5381(C)  
478-746-9421 (O)  
[lheath@fickling.com](mailto:lheath@fickling.com)

**Joseph Bowen**, Commercial Sales & Leasing  
478-562-6026(C)  
478-746-9421 (O)  
[jbowen@fickling.com](mailto:jbowen@fickling.com)

**[commercial.fickling.com](http://commercial.fickling.com)**

577 Mulberry St, Suite 1100 \* P.O. Box 310 \* Macon, GA 31202 | Phone (478) 746-9421 | Fax (478) 742-2015

This information is from resources deemed to be reliable, no warranties or guarantees for accuracy are made by Fickling and Company

**FOR SALE**

**Hospice Care/Potential Group Home Facility**

**504 Parker Dairy Road**

**Dublin, GA 31021**

## PHOTOS



**FOR MORE  
INFORMATION  
CONTACT**

**Lan Heath**, Commercial Sales & Leasing  
478-731-5381(C)  
478-746-9421 (O)  
[lheath@fickling.com](mailto:lheath@fickling.com)

**Joseph Bowen**, Commercial Sales & Leasing  
478-562-6026(C)  
478-746-9421 (O)  
[jbowen@fickling.com](mailto:jbowen@fickling.com)

**[commercial.fickling.com](http://commercial.fickling.com)**

577 Mulberry St, Suite 1100 \* P.O. Box 310 \* Macon, GA 31202 | Phone (478) 746-9421 | Fax (478) 742-2015

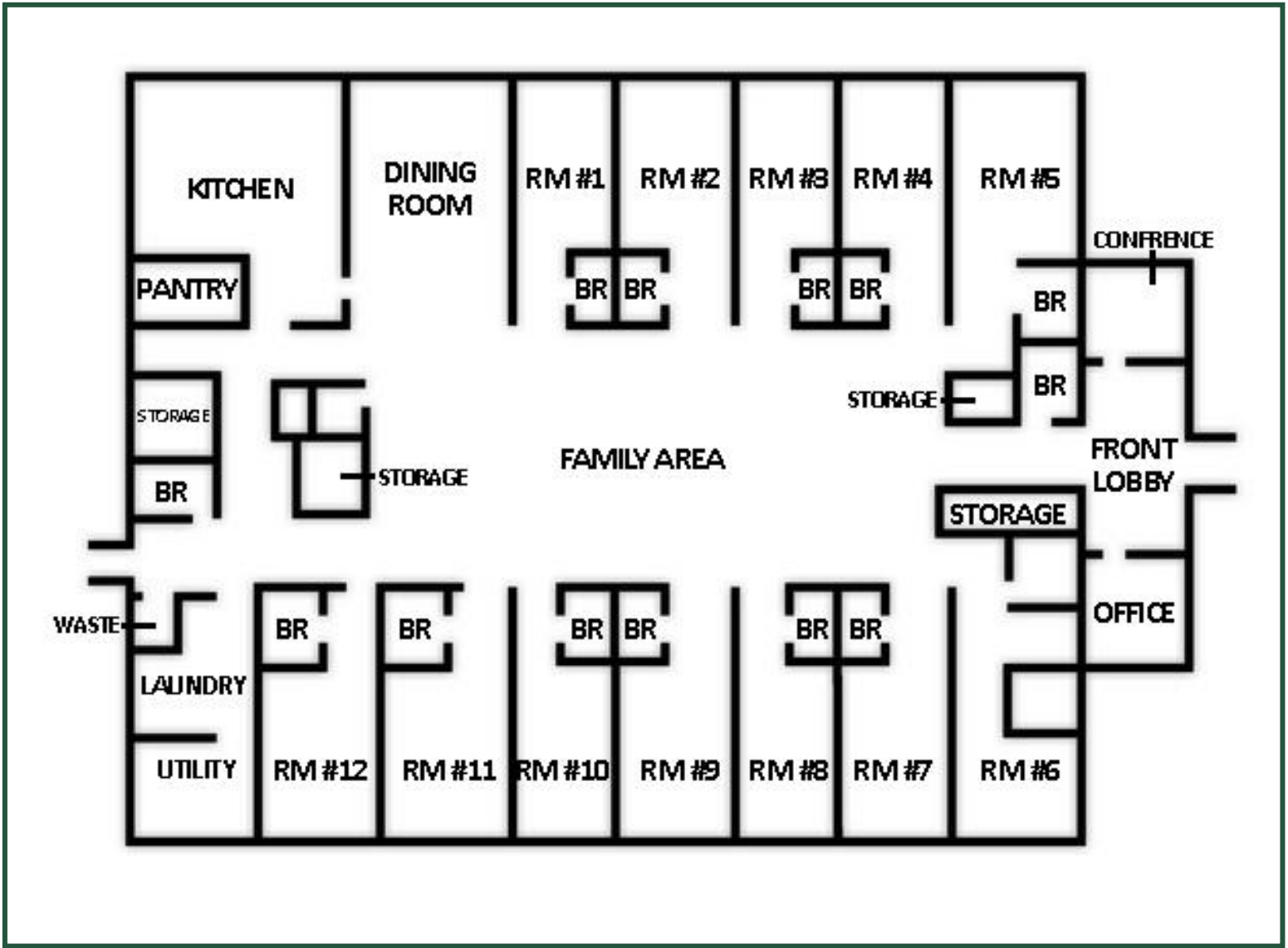
This information is from resources deemed to be reliable, no warranties or guarantees for accuracy are made by Fickling and Company



**FOR SALE**  
**Hospice Care/Potential Group Home Facility**  
**504 Parker Dairy Road**  
**Dublin, GA 31021**



**FLOORPLAN**



\*Floorplan not made to scale

**FOR MORE INFORMATION CONTACT**

<p><b>Lan Heath</b>, Commercial Sales &amp; Leasing          478-731-5381(C)          478-746-9421 (O)          lheath@fickling.com</p>	<p><b>Joseph Bowen</b>, Commercial Sales &amp; Leasing          478-562-6026(C)          478-746-9421 (O)          jbowen@fickling.com</p>
---	--

**commercial.fickling.com**

577 Mulberry St, Suite 1100 \* P.O. Box 310 \* Macon, GA 31202 | Phone (478) 746-9421 | Fax (478) 742-2015  
 This information is from resources deemed to be reliable, no warranties or guarantees for accuracy are made by Fickling and Company

**FOR SALE**

**Hospice Care/Potential Group Home Facility**  
**504 Parker Dairy Road**  
**Dublin, GA 31021**

**AERIAL**



2023 Demos	1 mile	3 mile	5 mile
Population	1,464	12,743	24,567
Avg. HHI	\$80,145	\$80,290	\$69,321
Median Age	34.1	37.1	37.8



**FOR MORE INFORMATION CONTACT**

**Lan Heath, Commercial Sales & Leasing**  
 478-731-5381(C)  
 478-746-9421 (O)  
[lheath@fickling.com](mailto:lheath@fickling.com)

**Joseph Bowen, Commercial Sales & Leasing**  
 478-562-6026(C)  
 478-746-9421 (O)  
[jbowen@fickling.com](mailto:jbowen@fickling.com)

[commercial.fickling.com](http://commercial.fickling.com)

577 Mulberry St, Suite 1100 \* P.O. Box 310 \* Macon, GA 31202 | Phone (478) 746-9421 | Fax (478) 742-2015

This information is from resources deemed to be reliable, no warranties or guarantees for accuracy are made by Fickling and Company