

LAND FOR SALE
1888 PAUL WALSH DRIVE
MACON, GA 31206

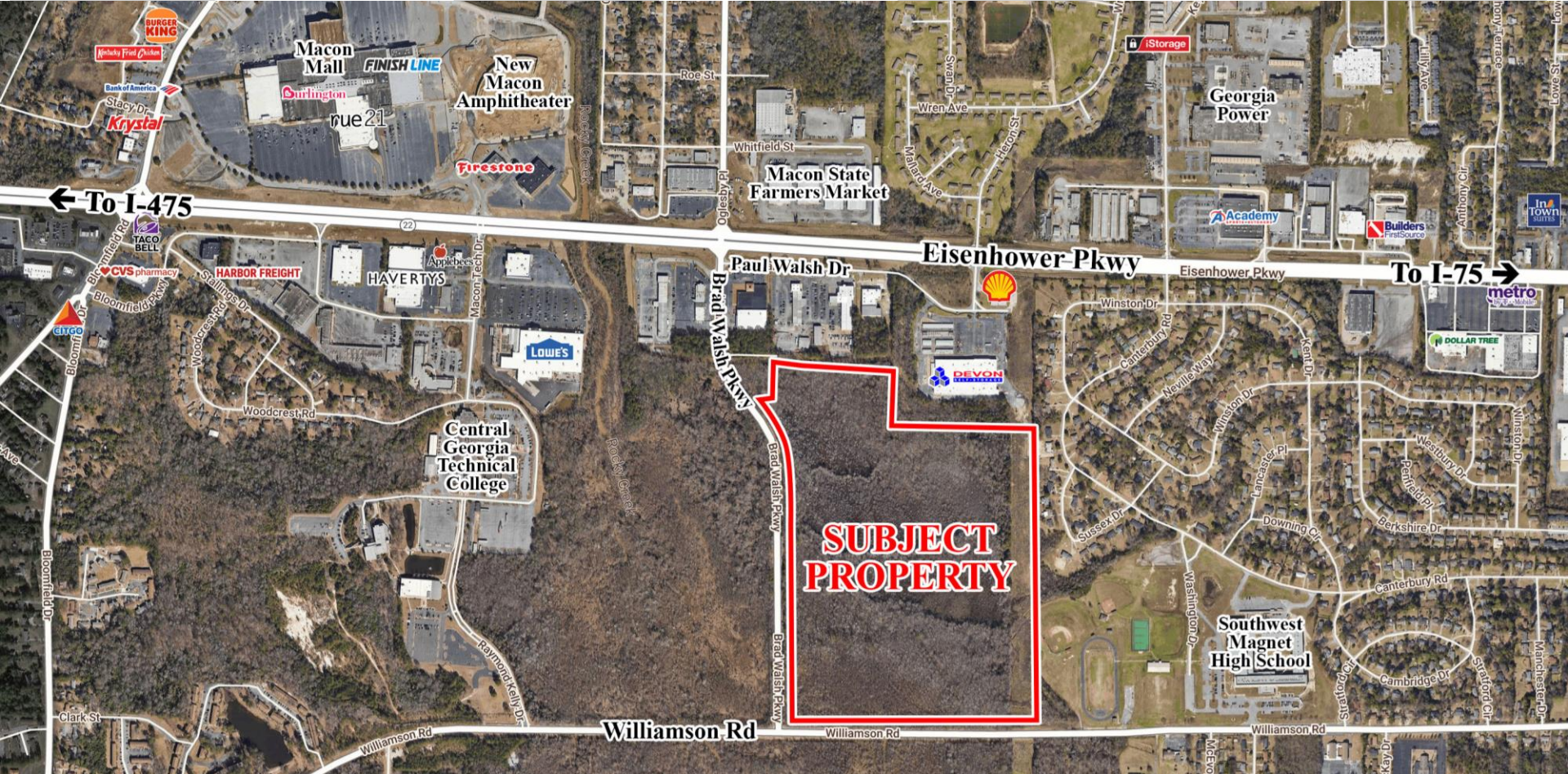


Summary

Area Info

Topography

Survey



CONTACT

Jenny Howell
478-746-9421 Office
786-449-8523 Cell
jhowell@fickling.com



577 Mulberry St, Suite 1100
Macon, GA 31201
478.746.9421 Office
<https://commercial.fickling.com>

PROPERTY INFORMATION

BUILDING

Property Address:	1888 Paul Walsh Drive Macon, GA 31206
County:	Bibb
Total Size:	88.05 Acres
Utilities:	Water and sewer to site
Frontage:	Williamson Road - ± 1,686' Brad Walsh Parkway - ± 2,279'
Traffic Count:	Eisenhower Parkway - 20,000 VPD Williamson Road - 7,100 VPD

SITE

Site Size:	88.05 Acres
Parcel ID:	N092-0004
Zoning:	PDI - Planned Development Industrial

SALE PRICE: \$123,000
(\$1,397/Surveyed AC)

CONTACT

Jenny Howell
478-746-9421 Office
786-449-8523 Cell
jhowell@fickling.com



577 Mulberry St, Suite 1100
Macon, GA 31201
478.746.9421 Office
<https://commercial.fickling.com>

AREA INFORMATION

SITE

Property is located off busy Eisenhower Parkway (US Highway 80) between I-75 and I-475. Site is a 5-minute drive from the newly renovated Macon Mall, home to the world's largest indoor pickleball sports complex, as well as the new 12,000 seat amphitheater slated to open in Spring 2024.

Asking price is \$1,397 per surveyed acre. Water & sewer map and other details are available upon request. Contact Agent for more information.

CONTACT

Jenny Howell
478-746-9421 Office
786-449-8523 Cell
jhowell@fickling.com

AREA INFORMATION

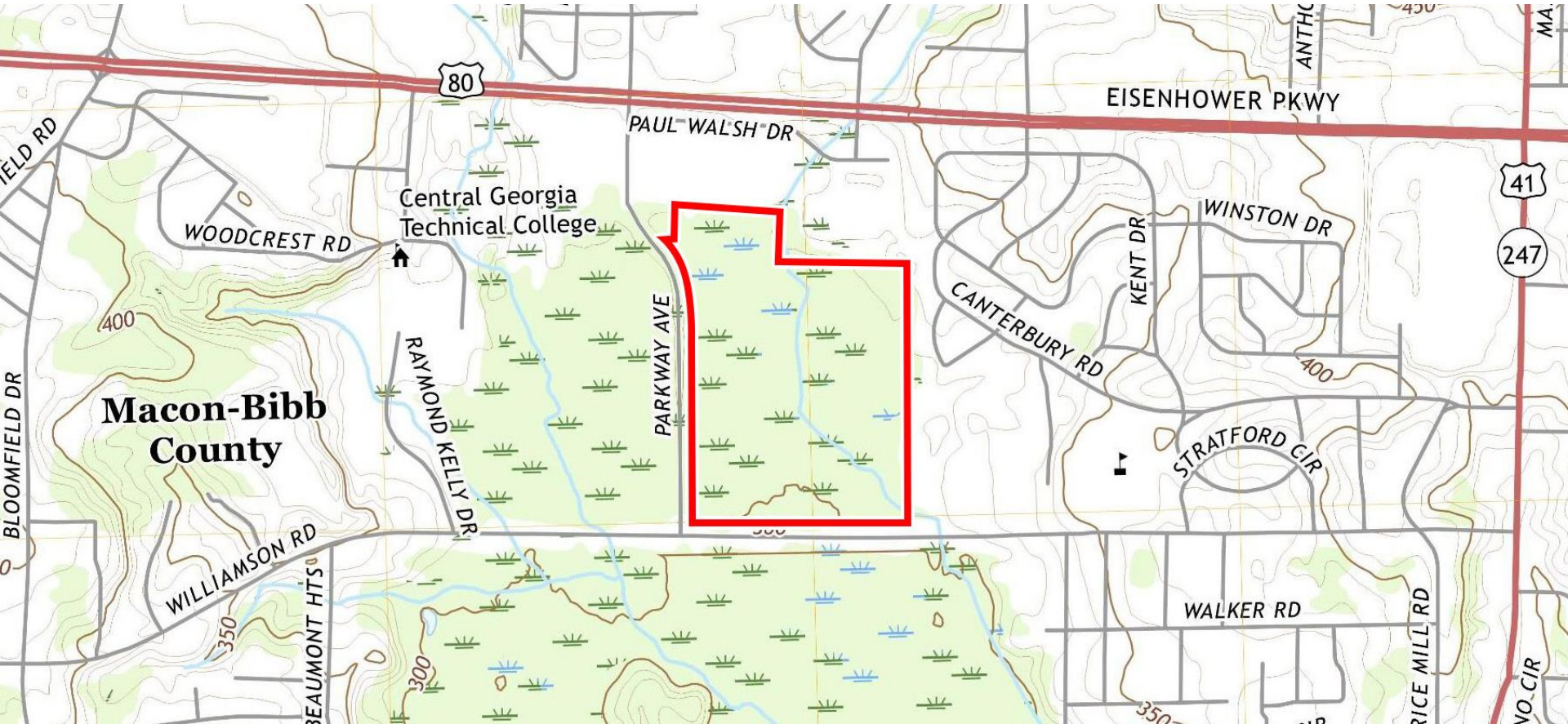
Nearby businesses include Devon Self Storage, 478 Liquidate, Butler Collision, Macon State Farmers Market, Lowe's, Academy Sports & Outdoors, Central Georgia Technical College, Havertys Furniture, Harbor Freight, and many other retail and restaurant locations.

Demographics 2023	3 Mile	5 Miles	10 Miles
Population	53,393	85,294	167,775
Avg HH Income	\$42,532	\$62,442	\$80,168
Median Age	33.0	34.5	36.6



577 Mulberry St, Suite 1100
Macon, GA 31201
478.746.9421 Office
<https://commercial.fickling.com>

TOPOGRAPHY



CONTACT

Jenny Howell
478-746-9421 Office
786-449-8523 Cell
jhowell@fickling.com



577 Mulberry St, Suite 1100
Macon, GA 31201
478.746.9421 Office
<https://commercial.fickling.com>

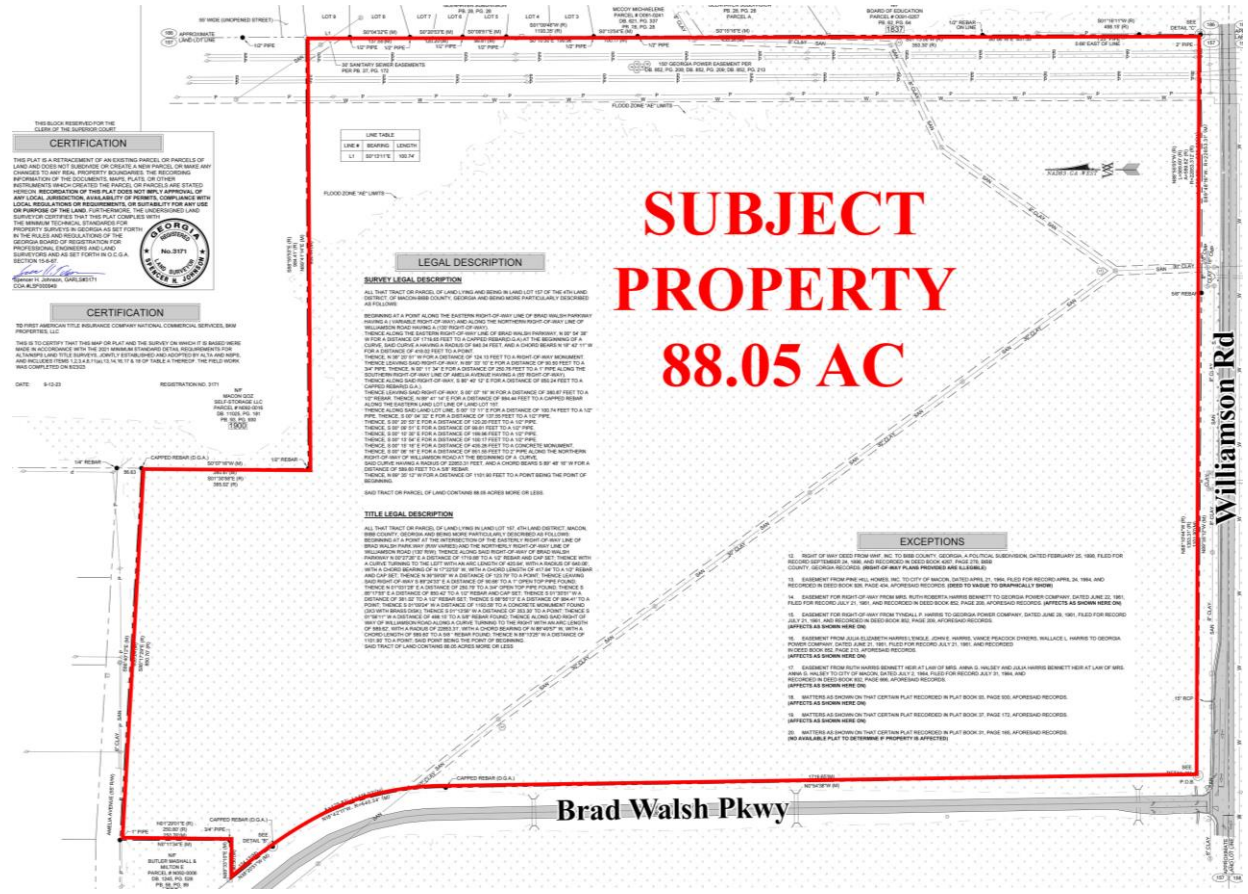
Summary

Area Info

Topography


Survey

SURVEY



CONTACT

Jenny Howell
478-746-9421 Office
786-449-8523 Cell
jhowell@fickling.com



577 Mulberry St, Suite 1100
Macon, GA 31201
478.746.9421 Office
<https://commercial.fickling.com>