

# 1.43 AC Commercial Land For Sale

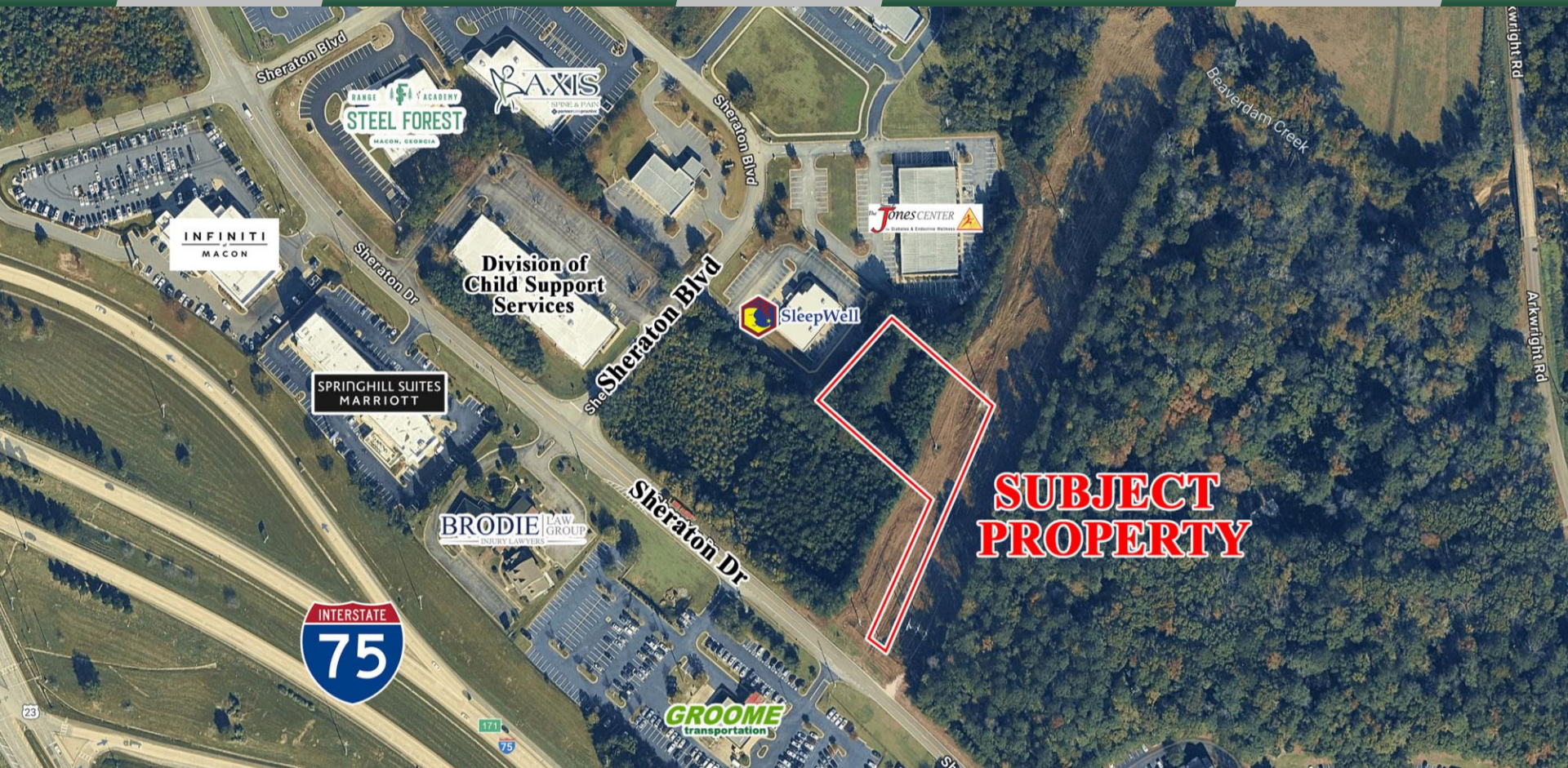
4555 Sheraton Drive  
Macon, GA 31210



Summary

Area Info

Aerial



## CONTACT

**Wendy H Pierce, RPA**  
478-746-9421 Office  
478-335-1254 Cell  
wpierce@fickling.com

**Jenny Howell**  
478-746-9421 Office  
786-449-8523 Cell  
jenny@fickling.com



577 Mulberry St, Suite 1100  
Macon, GA 31201  
478.746.9421 Office  
<https://commercial.fickling.com>

1.43 AC Commercial Land For Sale  
4555 Sheraton Drive  
Macon, GA 31210



Summary

Area Info

Aerial

PROPERTY INFORMATION

SITE

**Property Address:** 4555 Sheraton Drive  
Macon, GA 31210

**County:** Bibb

**Site Size:** 1.43 Acres

**Parcel ID:** M030-0106

**Zoning:** C-2

**Utilities:** All Public Utilities Serve Site

**Traffic Count:** I-75 - 55,281 VPD  
Riverside Drive – 29,570 VPD

NOTES

Great development opportunity! Potential uses are office, retail, medical, spa, or fitness/gym. Property has excellent access to I-75.

**SALE PRICE: \$225,000**

Demographics 2024	3 Miles	5 Miles	7 Miles
Population	23,092	48,175	93,920
Avg HH Income	\$123,445	\$125,581	\$99,701
Median Age	37.5	38.7	37.5

CONTACT

**Wendy H Pierce, RPA**  
478-746-9421 Office  
478-335-1254 Cell  
wpierce@fickling.com

**Jenny Howell**  
478-746-9421 Office  
786-449-8523 Cell  
jenny@fickling.com



577 Mulberry St, Suite 1100  
Macon, GA 31201  
478.746.9421 Office  
<https://commercial.fickling.com>

# 1.43 AC Commercial Land For Sale

## 4555 Sheraton Drive

### Macon, GA 31210



Summary

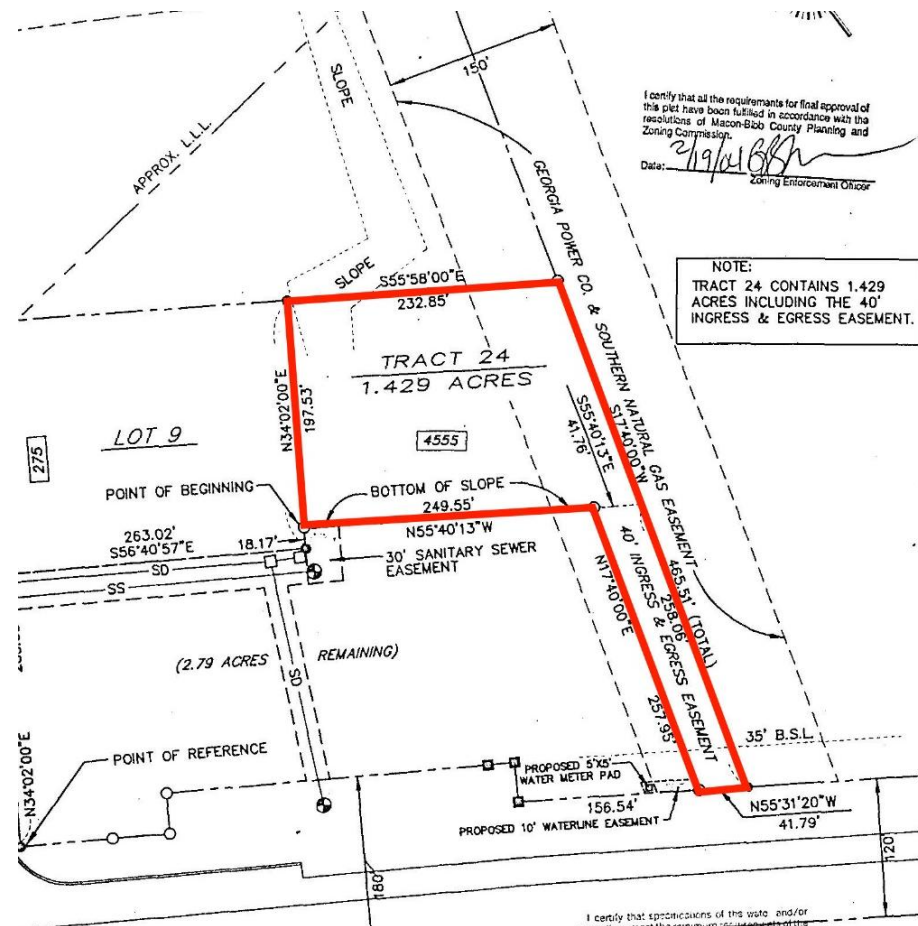
Area Info

Aerial

## PROPERTY INFORMATION

### LOCATION

Located just off I-75. Surrounding neighbors include two North Macon retail centers, The Shoppes at River Crossing and North Macon Plaza. Other neighbors include Brodie Law Group, Spring Hill Suites, Groome Transportation, Infiniti of Macon, Mercedes-Benz of Macon, GastroSouth Endoscopy Center, Texas Roadhouse, Chili's Bar and Grill, and many other retailers, restaurants, and businesses.



### CONTACT

**Wendy H Pierce, RPA**  
478-746-9421 Office  
478-335-1254 Cell  
wpierce@fickling.com

**Jenny Howell**  
478-746-9421 Office  
786-449-8523 Cell  
jenny@fickling.com



577 Mulberry St, Suite 1100  
Macon, GA 31201  
478.746.9421 Office  
<https://commercial.fickling.com>

# 1.43 AC Commercial Land For Sale

## 4555 Sheraton Drive

### Macon, GA 31210



Summary

Area Info

Aerial



#### CONTACT

**Wendy H Pierce, RPA**  
478-746-9421 Office  
478-335-1254 Cell  
wpierce@fickling.com

**Jenny Howell**  
478-746-9421 Office  
786-449-8523 Cell  
jenny@fickling.com



577 Mulberry St, Suite 1100  
Macon, GA 31201  
478.746.9421 Office  
<https://commercial.fickling.com>