

**Warehouse For Sale**  
**Renaissance Park – Formerly Central State Hospital Campus**  
**258 Depot Circle Milledgeville, GA 31061**



Summary

Area Info

Photos

Aerial

Site Map



**SALE PRICE: \$75,000**

**CONTACT**

**Patty Burns, CCIM, ALC**  
478-746-9421 Office  
478-951-5100 Cell  
[patty@fickling.com](mailto:patty@fickling.com)

**Trip Wilhoit, CCIM, ALC**  
478-746-9421 Office  
478-960-4080 Cell  
[trip@fickling.com](mailto:trip@fickling.com)



577 Mulberry St, Suite 1100  
Macon, GA 31201  
478.746.9421 Office  
<https://commercial.fickling.com>



# Warehouse For Sale

Renaissance Park – Formerly Central State Hospital Campus  
258 Depot Circle Milledgeville, GA 31061



Summary

Area Info

Photos

Aerial

Site Map

## PROPERTY INFORMATION

### BUILDING

**Property Address:** 258 Depot Circle  
Milledgeville, GA 31061

**County:** Baldwin

**Total Size:** 4,000± SF

**Utilities:** All available

**Loading Docks:** 50' Loading Dock  
With Sliding Dock Doors

### SITE

**Site Size:** 4.6± Acres

**Parcel ID:** 072 001Q

**Zoning:** City of Milledgeville

**SALE PRICE: \$75,000**



### CONTACT

**Patty Burns, CCIM, ALC**  
478-746-9421 Office  
478-951-5100 Cell  
patty@fickling.com

**Trip Wilhoit, CCIM, ALC**  
478-746-9421 Office  
478-960-4080 Cell  
trip@fickling.com



577 Mulberry St, Suite 1100  
Macon, GA 31201  
478.746.9421 Office  
<https://commercial.fickling.com>

# Warehouse For Sale

## Renaissance Park – Formerly Central State Hospital Campus

### 258 Depot Circle Milledgeville, GA 31061



Summary

Area Info

Photos

Aerial

Site Map

## PROPERTY INFORMATION

### NOTES

Property is an ideal location for warehouse, storage, service contractors such as electrical, HVAC, mechanical, or plumbing.



### LOCATION

Located in Renaissance Park, which is formerly known as Central State Park Hospital Campus. Central State was once the state's largest facility for treatment or mental illness and development disabilities. In the 1960s the facility was acknowledged as the biggest in the world, encompassing 8,000 acres. Currently Central State complex encompasses closer to 1,750 acres.

Surrounding neighbors on the campus include The Depot Museum, Georgia Military College Auditorium, Lawrence Building Warehouses, and The Dorms and Apartments (currently under renovation). Subject property is convenient to Downtown Milledgeville, I-75, I-16, I-20, and the Fall Line Freeway. Other surrounding neighbors include Georgia College & State University, Veterans Medical Facility, and War Veterans Home.

### CONTACT

**Patty Burns, CCIM, ALC**  
478-746-9421 Office  
478-951-5100 Cell  
[patty@fickling.com](mailto:patty@fickling.com)

**Trip Wilhoit, CCIM, ALC**  
478-746-9421 Office  
478-960-4080 Cell  
[trip@fickling.com](mailto:trip@fickling.com)



577 Mulberry St, Suite 1100  
Macon, GA 31201  
478.746.9421 Office  
<https://commercial.fickling.com>



# Warehouse For Sale

Renaissance Park – Formerly Central State Hospital Campus  
258 Depot Circle Milledgeville, GA 31061



Summary

Area Info

Photos

Aerial

Site Map



## CONTACT

**Patty Burns, CCIM, ALC**  
478-746-9421 Office  
478-951-5100 Cell  
[patty@fickling.com](mailto:patty@fickling.com)

**Trip Wilhoit, CCIM, ALC**  
478-746-9421 Office  
478-960-4080 Cell  
[trip@fickling.com](mailto:trip@fickling.com)



577 Mulberry St, Suite 1100  
Macon, GA 31201  
478.746.9421 Office  
<https://commercial.fickling.com>



# Warehouse For Sale

## Renaissance Park – Formerly Central State Hospital Campus

258 Depot Circle Milledgeville, GA 31061



- Summary
- Area Info
- Photos
- Aerial
- Site Map



### CONTACT

**Patty Burns, CCIM, ALC**  
478-746-9421 Office  
478-951-5100 Cell  
patty@fickling.com

**Trip Wilhoit, CCIM, ALC**  
478-746-9421 Office  
478-960-4080 Cell  
trip@fickling.com



577 Mulberry St, Suite 1100  
Macon, GA 31201  
478.746.9421 Office  
<https://commercial.fickling.com>

This information is from resources deemed to be reliable and is subject to change without notice. No warranties or guarantees for accuracy are made by Fickling and Company.



# Warehouse For Sale

## Renaissance Park – Formerly Central State Hospital Campus

258 Depot Circle Milledgeville, GA 31061



Summary

Area Info

Photos

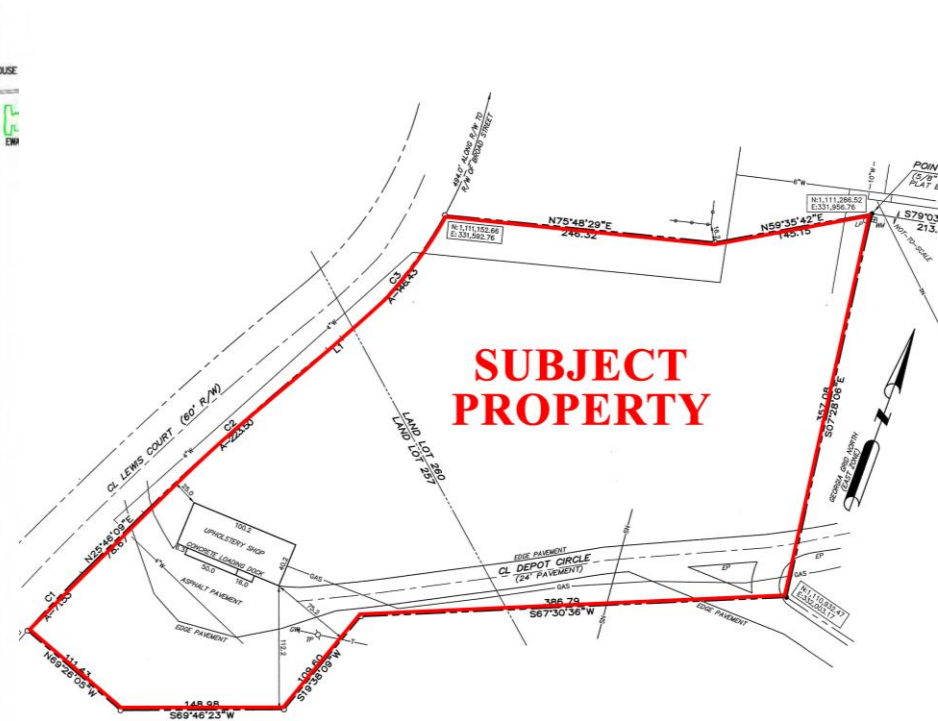
Aerial

Site Map

### RENAISSANCE PARK SITE MAP



### PLAT MAP



#### CONTACT

**Patty Burns, CCIM, ALC**  
 478-746-9421 Office  
 478-951-5100 Cell  
 patty@fickling.com

**Trip Wilhoit, CCIM, ALC**  
 478-746-9421 Office  
 478-960-4080 Cell  
 trip@fickling.com



577 Mulberry St, Suite 1100  
 Macon, GA 31201  
 478.746.9421 Office  
<https://commercial.fickling.com>