

ASSISTED LIVING FACILITY FOR SALE

1026 Keith Drive
Perry, GA 31069



Summary

Area Info

Photos

Aerial

Site Map



CONTACT

Wendy H Pierce, RPA
478-746-9421 Office
478-335-1254 Cell
wpierce@fickling.com



577 Mulberry St, Suite 1100
Macon, GA 31201
478.746.9421 Office
<https://commercial.fickling.com>

This information is from resources deemed to be reliable and is subject to change without notice. No warranties or guarantees for accuracy are made by Fickling and Company.

ASSISTED LIVING FACILITY FOR SALE

1026 Keith Drive
Perry, GA 31069



Summary

Area Info

Photos

Aerial

Site Map

PROPERTY INFORMATION

BUILDING

Property Address: 1026 Keith Drive
Perry, GA 31069

County: Houston

Total Size: 3 buildings - 18,860 SF

Frontage: 300' on Keith Drive

Utilities: All available

Parking: Paved, ample

Traffic Count: Perry Parkway: 12,400 VPD
Main Street: 5,290 VPD

SITE

Site Size: 2.01 Acres

Parcel ID: OP0440 054000

Zoning: C-2

Demographics 2023	5 Miles	7 Miles	10 Miles
Population	28,731	48,326	105,275
Avg HH Income	\$94,204	\$91,708	\$97,857
Median Age	38.2	37.8	37.2

SALE PRICE: \$2,235,000
(\$118.50/SF)

CONTACT

Wendy H Pierce, RPA
478-746-9421 Office
478-335-1254 Cell
wpierce@fickling.com



577 Mulberry St, Suite 1100
Macon, GA 31201
478.746.9421 Office
<https://commercial.fickling.com>

ASSISTED LIVING FACILITY FOR SALE

1026 Keith Drive
Perry, GA 31069



Summary

Area Info

Photos

Aerial

Site Map

Autumn Terrace currently operates as a 3 building, 45 bed assisted living facility. Owner would be willing to sell the business if purchaser was interested in continuing its current use. This property is also ideal for repurposing for use as traditional or medical offices.

Situated in the heart of Perry's medical district, this property is located just one street over from Houston Healthcare Perry Hospital. On Keith Drive, the site is neighbored by a wide variety of medical providers, including DaVita Dialysis, Capstone Medical Clinic, Women's Healthcare, Lighthouse Nursing Agency, and Vineville Internal Medicine Perry. Easy access to I-75, just 3 miles from Exit 136, and 4 miles from Exit 138.



CONTACT

Wendy H Pierce, RPA
478-746-9421 Office
478-335-1254 Cell
wpierce@fickling.com



577 Mulberry St, Suite 1100
Macon, GA 31201
478.746.9421 Office
<https://commercial.fickling.com>

ASSISTED LIVING FACILITY FOR SALE

1026 Keith Drive
Perry, GA 31069



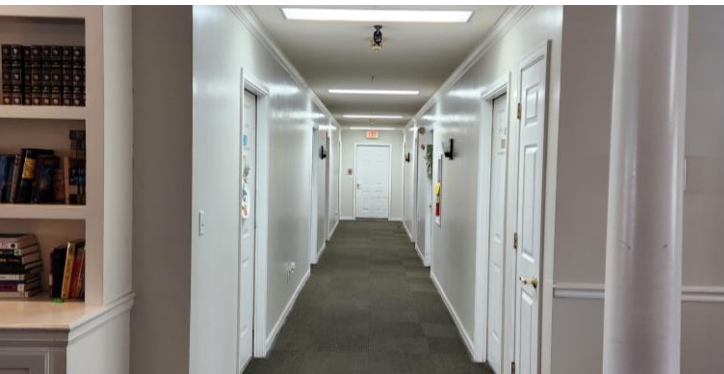
Summary

Area Info

Photos

Aerial

Site Map



CONTACT

Wendy H Pierce, RPA
478-746-9421 Office
478-335-1254 Cell
wpierce@fickling.com



577 Mulberry St, Suite 1100
Macon, GA 31201
478.746.9421 Office
<https://commercial.fickling.com>

ASSISTED LIVING FACILITY FOR SALE

1026 Keith Drive
Perry, GA 31069



Summary

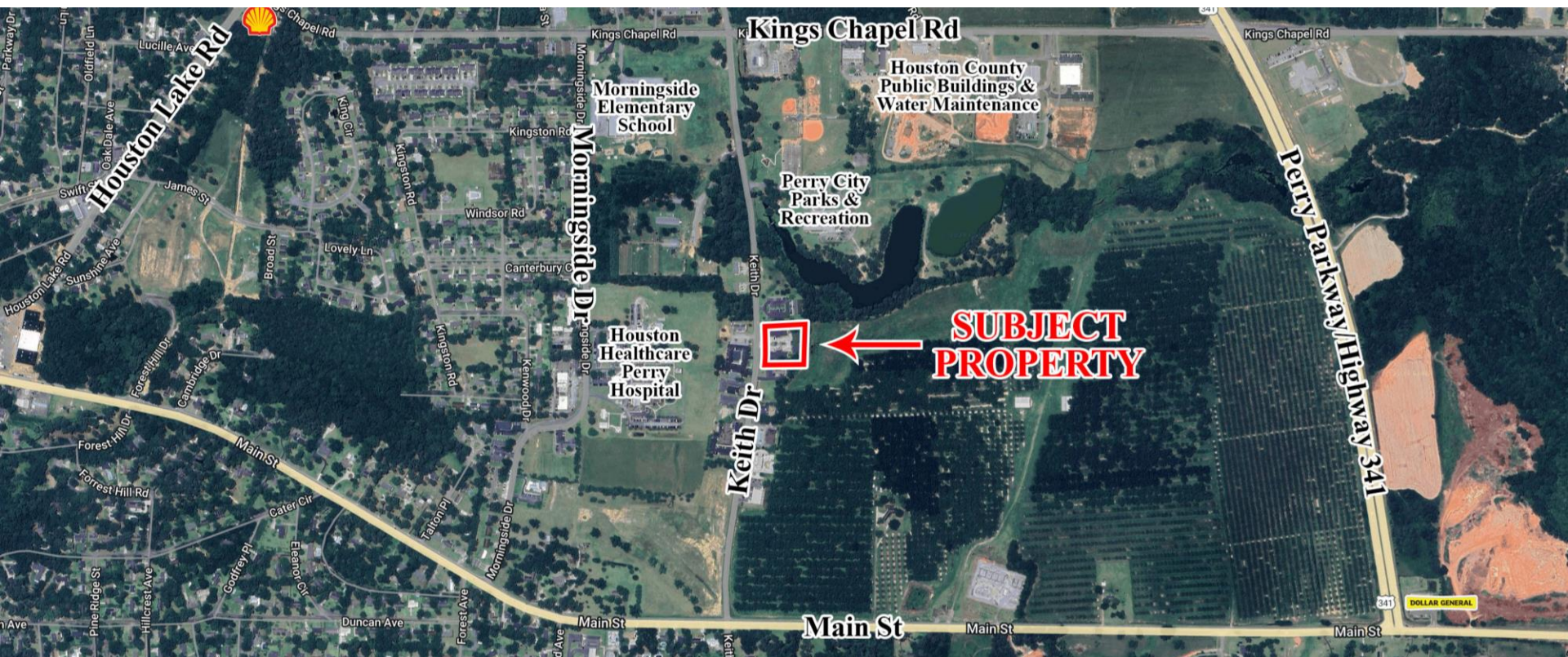
Area Info

Photos

Aerial

Site Map

AERIAL



CONTACT

Wendy H Pierce, RPA
478-746-9421 Office
478-335-1254 Cell
wpierce@fickling.com



577 Mulberry St, Suite 1100
Macon, GA 31201
478.746.9421 Office
<https://commercial.fickling.com>

ASSISTED LIVING FACILITY FOR SALE

1026 Keith Drive
Perry, GA 31069



Summary

Area Info

Photos

Aerial

Site Map

SITE MAP



CONTACT

Wendy H Pierce, RPA
478-746-9421 Office
478-335-1254 Cell
wpierce@fickling.com



577 Mulberry St, Suite 1100
Macon, GA 31201
478.746.9421 Office
<https://commercial.fickling.com>