

FOR LEASE- 32,000 SF Warehouse with 3,500 SF Office
311 Lawrence Road Suite G
Milledgeville, GA 31061
Located in Renaissance Park (Formerly Central State Hospital Campus)

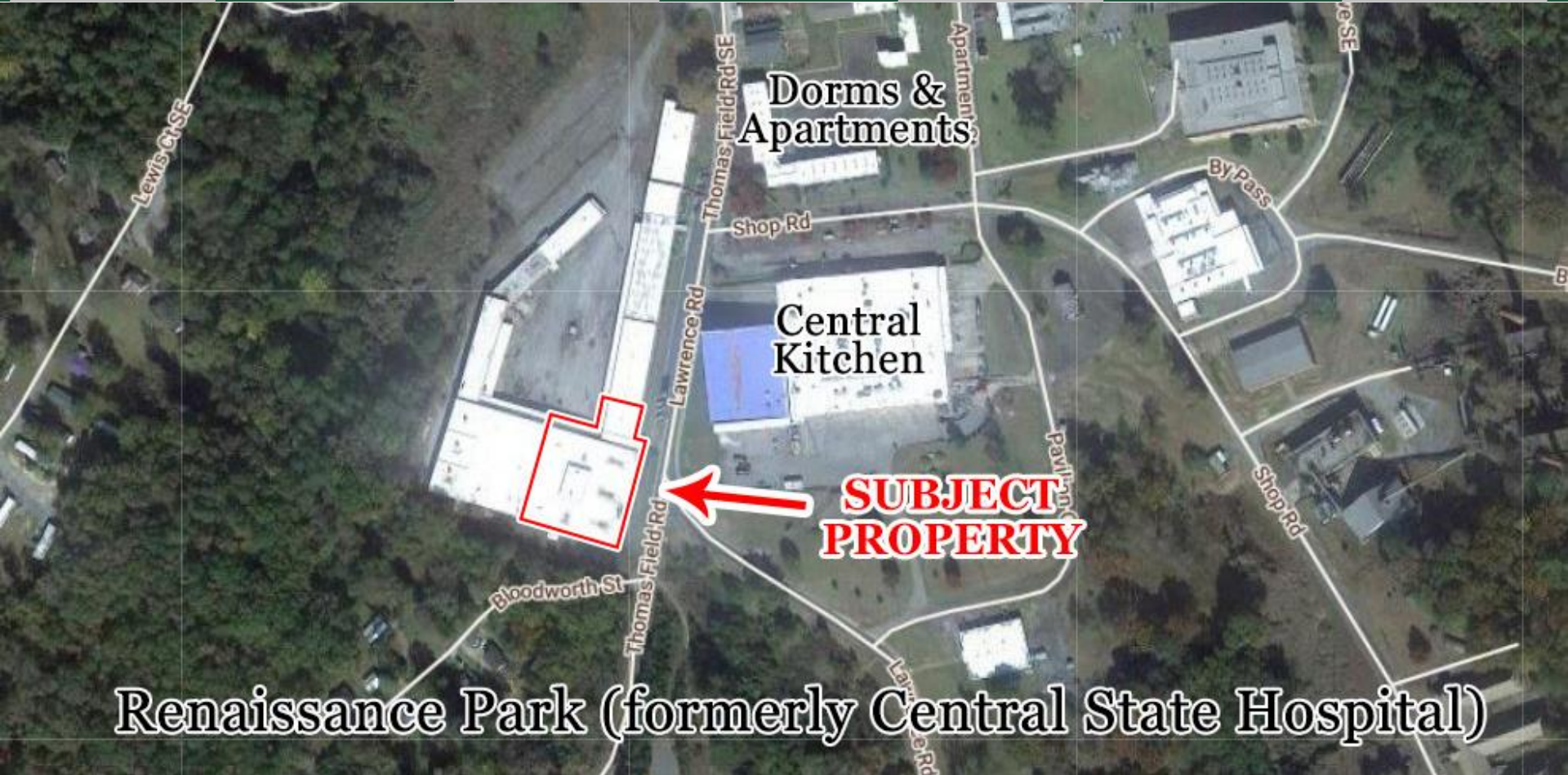


Summary

Area Info

Photos

Site Map



Renaissance Park (formerly Central State Hospital)

CONTACT

Patty Burns, CCIM, ALC
478-746-9421 Office
478-951-5100 Cell
patty@fickling.com

Trip Wilhoit, CCIM, ALC
478-746-9421 Office
478-960-4080 Cell
trip@fickling.com



577 Mulberry St, Suite 1100
Macon, GA 31201
478.746.9421 Office
<https://commercial.fickling.com>

FOR LEASE- 32,000 SF Warehouse with 3,500 SF Office
311 Lawrence Road Suite G
Milledgeville, GA 31061
Located in Renaissance Park (Formerly Central State Hospital Campus)



Summary

Area Info

Photos

Site Map

PROPERTY INFORMATION

BUILDING

Property Address: 311 Lawrence Road Suite G
Milledgeville, GA 31061

County: Baldwin

Total Size: 32,000 SF Warehouse
3,500 SF Office
35,500 SF Total

Available: **35,500 SF**

Utilities: Water & Sewer Available

Parking: Shared & Ample

SITE

Frontage: ±260' ft on Lawrence Road

Zoning: Light Industrial

**LEASE RATE:
CONTACT AGENT**

Demographics 2023	1 Mile	3 Miles	5 Miles
Population	2,555	16,245	26,253
Avg HH Income	\$36,986	\$49,912	\$67,936
Median Age	38.8	32.6	33.3

CONTACT

Patty Burns, CCIM, ALC
478-746-9421 Office
478-951-5100 Cell
patty@fickling.com

Trip Wilhoit, CCIM, ALC
478-746-9421 Office
478-960-4080 Cell
trip@fickling.com



577 Mulberry St, Suite 1100
Macon, GA 31201
478.746.9421 Office
<https://commercial.fickling.com>

This information is from resources deemed to be reliable and is subject to change without notice. No warranties or guarantees for accuracy are made by Fickling and Company.

FOR LEASE- 32,000 SF Warehouse with 3,500 SF Office
311 Lawrence Road Suite G
Milledgeville, GA 31061
Located in Renaissance Park (Formerly Central State Hospital Campus)



Summary

Area Info

Photos

Site Map

PROPERTY INFORMATION

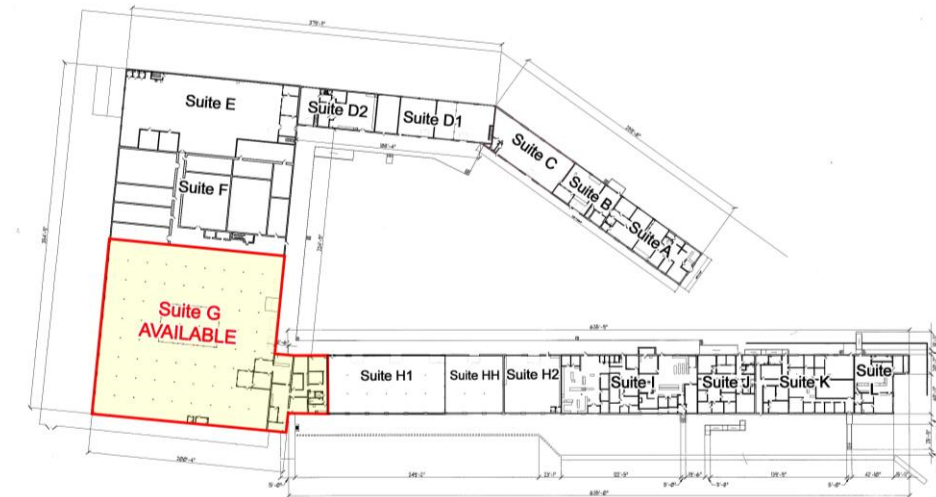
NOTES

Property is a 32,000 SF warehouse with a 3,500 SF of office space with 4 restrooms. Dock high and drive in doors are in the warehouse. Suite is apart of an industrial park with a great tenant mix. Other tenants in the park include Ervin Cable, National On Demand, Disc Golf, Decoy Ducks, and Tri County EMC.

LOCATION

This warehouse is located in Milledgeville, GA in Renaissance Park formerly known as Central State Hospital Campus. Conveniently located 28 miles to I-75/I-16 and 34 miles to I-20.

SUITE G SITE MAP



LAURENCE BUILDING OVERALL FIRST FLOOR PLAN
SCALE: 1/8" = 1'-0" (VERTICAL SCALE NOT TO SCALE)

CONTACT

Patty Burns, CCIM, ALC
478-746-9421 Office
478-951-5100 Cell
patty@fickling.com

Trip Wilhoit, CCIM, ALC
478-746-9421 Office
478-960-4080 Cell
trip@fickling.com



577 Mulberry St, Suite 1100
Macon, GA 31201
478.746.9421 Office
<https://commercial.fickling.com>

FOR LEASE- 32,000 SF Warehouse with 3,500 SF Office
311 Lawrence Road Suite G
Milledgeville, GA 31061
Located in Renaissance Park (Formerly Central State Hospital Campus)



Summary

Area Info

Photos

Site Map



CONTACT

Patty Burns, CCIM, ALC
478-746-9421 Office
478-951-5100 Cell
patty@fickling.com

Trip Wilhoit, CCIM, ALC
478-746-9421 Office
478-960-4080 Cell
trip@fickling.com



577 Mulberry St, Suite 1100
Macon, GA 31201
478.746.9421 Office
<https://commercial.fickling.com>

FOR LEASE- 32,000 SF Warehouse with 3,500 SF Office
311 Lawrence Road Suite G
Milledgeville, GA 31061
Located in Renaissance Park (Formerly Central State Hospital Campus)



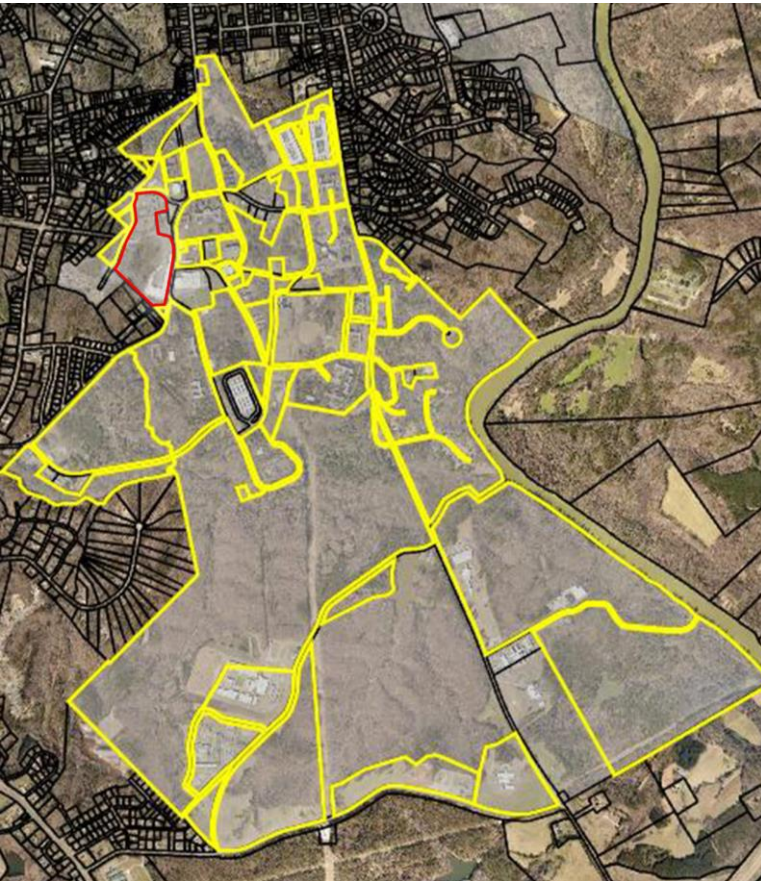
Summary

Area Info

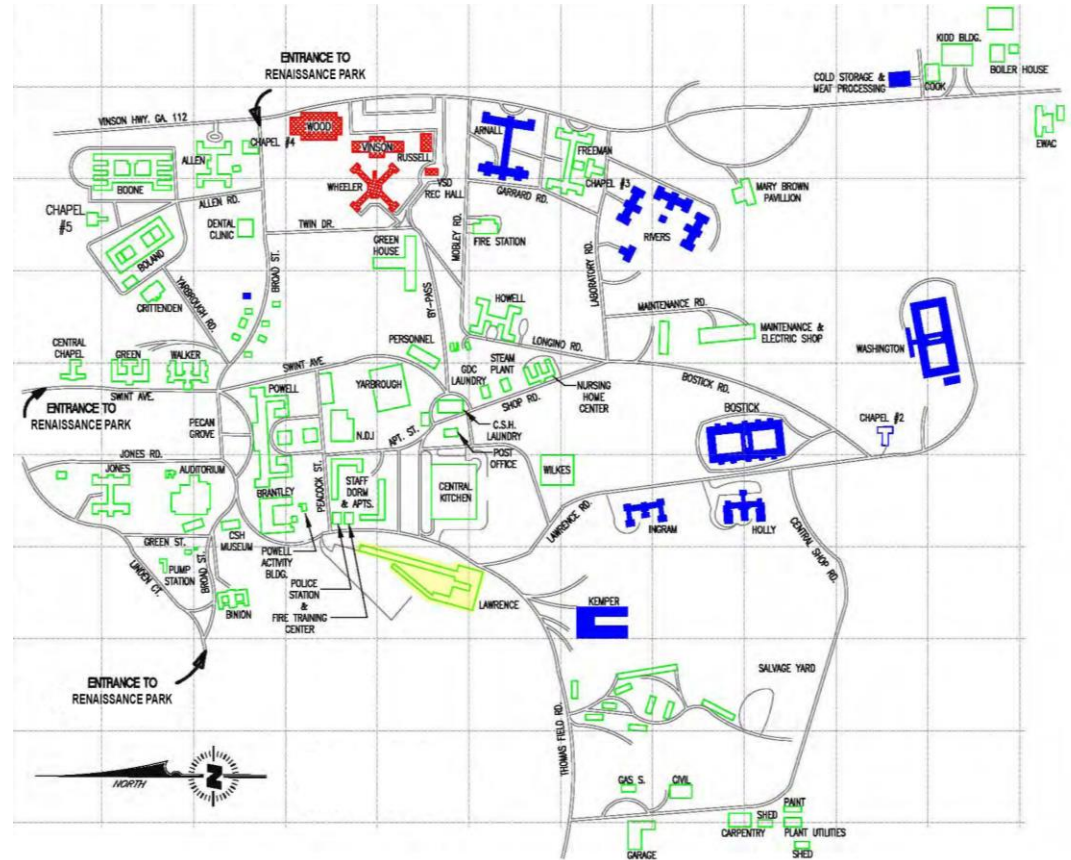
Photos

Site Map

Renaissance Park Aerial



Renaissance Park Site Map



CONTACT

Patty Burns, CCIM, ALC
 478-746-9421 Office
 478-951-5100 Cell
 patty@fickling.com

Trip Wilhoit, CCIM, ALC
 478-746-9421 Office
 478-960-4080 Cell
 trip@fickling.com



577 Mulberry St, Suite 1100
 Macon, GA 31201
 478.746.9421 Office
<https://commercial.fickling.com>