

# Former Prisons For Sale (SOLD SEPARATELY)

Located in Renaissance Park (Formerly Central State Hospital Campus)

Milledgeville, GA 31061



Summary

Area Info

Photos

Surveys

Aerial

Site Map



**PROPERTIES SOLD SEPARATELY**  
**CALL AGENT FOR PRICING INFORMATION**

## CONTACT

**Patty Burns, CCIM, ALC**  
478-746-9421 Office  
478-951-5100 Cell  
[patty@fickling.com](mailto:patty@fickling.com)

**Trip Wilhoit, CCIM, ALC**  
478-746-9421 Office  
478-960-4080 Cell  
[trip@fickling.com](mailto:trip@fickling.com)



577 Mulberry St, Suite 1100  
Macon, GA 31201  
478.746.9421 Office  
<https://commercial.fickling.com>

This information is from resources deemed to be reliable and is subject to change without notice. No warranties or guarantees for accuracy are made by Fickling and Company.



PROPERTY INFORMATION

BUILDINGS

Property Addresses:

Rivers State Prison –Vinson Hwy & Laboratory Rd

Men’s State Prison – Bostick Rd & Lawrence Rd

Scott State Prison – Lawrence Rd

Milledgeville, GA 31061

County:

Baldwin

Total Size:

Rivers State Prison – 212,300 SF (3 Buildings)

Men’s State Prison – 137,000± SF (1 Building)

Scott State Prison – (3 Buildings)

Kemper – 59,436 SF

Ingram – 96,360 SF

Holly – 147,896 SF

Utilities:

Rivers State Prison – All Available

Men’s State Prison – All Available

Scott State Prison – All Available

SITES

Site Sizes:

Rivers State Prison – 24.68 Acres

Men’s State Prison – 16.845 Acres

Scott State Prison – 15.16 Acres

Parcel Numbers:

Rivers State Prison – 072 001X

Men’s State Prison – 072 101

Scott State Prison – 072 001

PROPERTIES SOLD SEPARATELY  
CALL AGENT FOR PRICING INFORMATION

Demographics 2024	1 Mile	3 Miles	5 Miles
Population	1,894	14,635	25,462
Avg HH Income	\$35,056	\$49,452	\$68,242
Median Age	38.0	33.0	33.0

# Former Prisons For Sale (SOLD SEPARATELY)

Located in Renaissance Park (Formerly Central State Hospital Campus)

Milledgeville, GA 31061



Summary

Area Info

Photos

Surveys

Aerial

Site Map

## Rivers Prison

Rivers Prison complex consists of three main buildings. One building is 4 floors, the remaining two are 3 floors. Total square footage across all three buildings is 212,300 SF. All utilities available to all buildings.



## Men's State Prison

Men's State Prison consists of one main building, a chapel, and a few smaller buildings. The main prison building is 105,000± SF and is 1 floor. All utilities available to building.



## Scott State Prison

Scott State Prison complex consists of three buildings. The Kemper building is 59,436 SF over 2 floors, the Ingram building is 96,360 SF over 3 floors, and the Holly building is 147,896 SF over 3 floors. All utilities available to all buildings.



### CONTACT

**Patty Burns, CCIM, ALC**  
478-746-9421 Office  
478-951-5100 Cell  
[patty@fickling.com](mailto:patty@fickling.com)

**Trip Wilhoit, CCIM, ALC**  
478-746-9421 Office  
478-960-4080 Cell  
[trip@fickling.com](mailto:trip@fickling.com)



577 Mulberry St, Suite 1100  
Macon, GA 31201  
478.746.9421 Office  
<https://commercial.fickling.com>



# Former Prisons For Sale (SOLD SEPARATELY)

Located in Renaissance Park (Formerly Central State Hospital Campus)

Milledgeville, GA 31061



Summary

Area Info

Photos

Surveys

Aerial

Site Map

## RIVERS STATE PRISON



### CONTACT

**Patty Burns, CCIM, ALC**  
478-746-9421 Office  
478-951-5100 Cell  
[patty@fickling.com](mailto:patty@fickling.com)

**Trip Wilhoit, CCIM, ALC**  
478-746-9421 Office  
478-960-4080 Cell  
[trip@fickling.com](mailto:trip@fickling.com)



577 Mulberry St, Suite 1100  
Macon, GA 31201  
478.746.9421 Office  
<https://commercial.fickling.com>



# Former Prisons For Sale (SOLD SEPARATELY)

Located in Renaissance Park (Formerly Central State Hospital Campus)

Milledgeville, GA 31061



Summary

Area Info

Photos

Surveys

Aerial

Site Map

## MEN'S STATE PRISON



### CONTACT

**Patty Burns, CCIM, ALC**  
478-746-9421 Office  
478-951-5100 Cell  
[patty@fickling.com](mailto:patty@fickling.com)

**Trip Wilhoit, CCIM, ALC**  
478-746-9421 Office  
478-960-4080 Cell  
[trip@fickling.com](mailto:trip@fickling.com)



577 Mulberry St, Suite 1100  
Macon, GA 31201  
478.746.9421 Office  
<https://commercial.fickling.com>



# Former Prisons For Sale (SOLD SEPARATELY)

Located in Renaissance Park (Formerly Central State Hospital Campus)

Milledgeville, GA 31061



Summary

Area Info

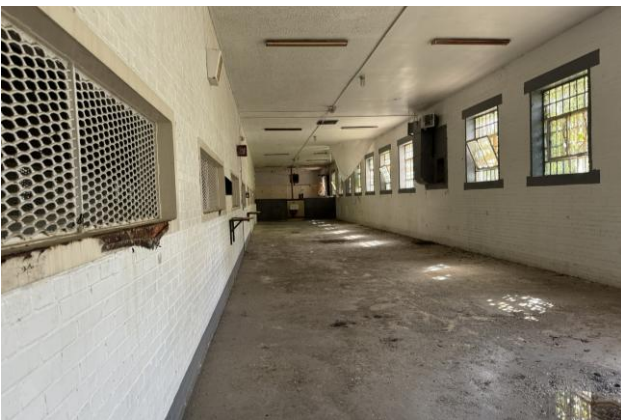
Photos

Surveys

Aerial

Site Map

## SCOTT STATE PRISON



### CONTACT

**Patty Burns, CCIM, ALC**  
478-746-9421 Office  
478-951-5100 Cell  
[patty@fickling.com](mailto:patty@fickling.com)

**Trip Wilhoit, CCIM, ALC**  
478-746-9421 Office  
478-960-4080 Cell  
[trip@fickling.com](mailto:trip@fickling.com)



577 Mulberry St, Suite 1100  
Macon, GA 31201  
478.746.9421 Office  
<https://commercial.fickling.com>

This information is from resources deemed to be reliable and is subject to change without notice. No warranties or guarantees for accuracy are made by Fickling and Company.

# Former Prisons For Sale (SOLD SEPARATELY)

Located in Renaissance Park (Formerly Central State Hospital Campus)

Milledgeville, GA 31061



Summary

Area Info

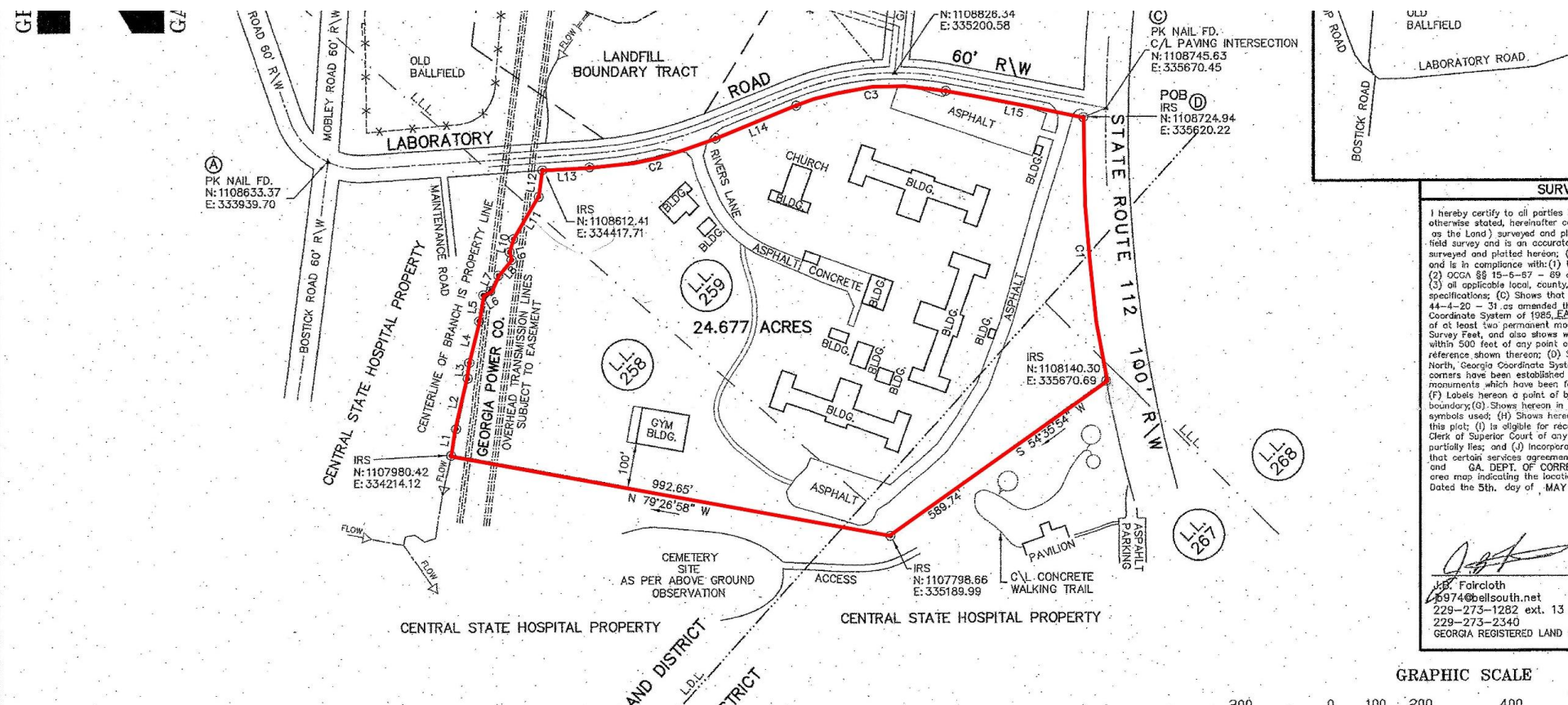
Photos

Surveys

Aerial

Site Map

## RIVERS STATE PRISON



### CONTACT

**Patty Burns, CCIM, ALC**  
478-746-9421 Office  
478-951-5100 Cell  
patty@fickling.com

**Trip Wilhoit, CCIM, ALC**  
478-746-9421 Office  
478-960-4080 Cell  
trip@fickling.com



577 Mulberry St, Suite 1100  
Macon, GA 31201  
478.746.9421 Office  
<https://commercial.fickling.com>



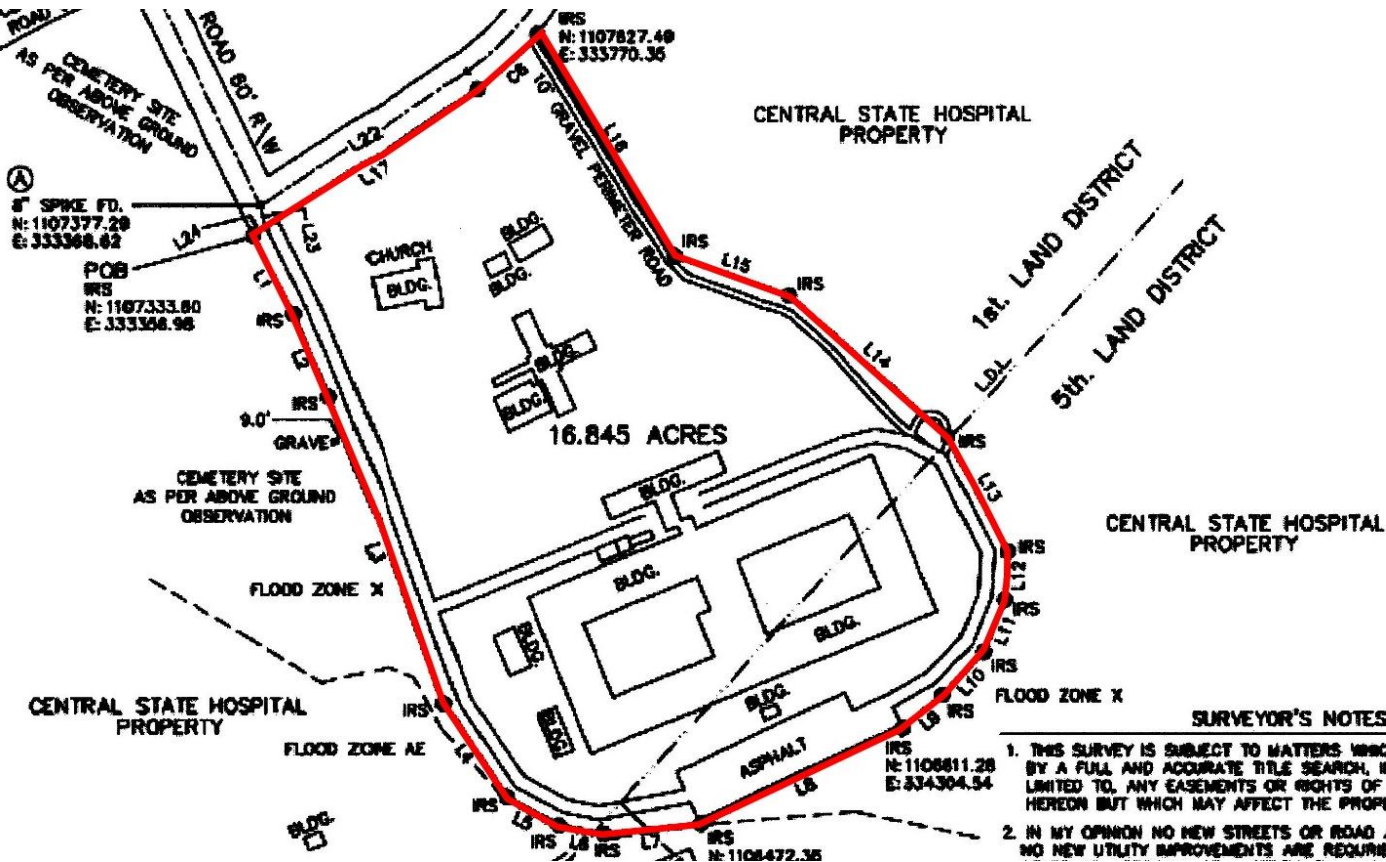
# Former Prisons For Sale (SOLD SEPARATELY)

Located in Renaissance Park (Formerly Central State Hospital Campus)  
Milledgeville, GA 31061



- Summary
- Area Info
- Photos
- Surveys
- Aerial
- Site Map

## MEN'S STATE PRISON



L1	S	79°10'28"	E	188.62'
L7	N	84°15'58"	E	141.08'
L8	N	84°50'10"	E	328.73'
L9	N	80°30'33"	E	78.38'
L10	N	83°52'33"	E	167.08'
L11	N	82°17'44"	E	182.73'
L12	N	85°27'03"	E	70.47'
L13	N	77°51'33"	W	188.18'
L14	N	47°50'57"	W	308.85'
L15	N	71°08'44"	W	178.38'
L16	N	31°52'30"	W	383.19'
L17	S	86°28'18"	W	387.68'
L18	N	78°51'28"	W	367.41'
L19	S	88°00'42"	W	122.42'
L20	S	88°21'15"	W	488.50'
L21	S	87°19'23"	W	784.47'
L22	S	86°28'18"	W	384.08'
L23	S	12°43'00"	E	13.08'
L24	S	86°28'18"	W	22.42'

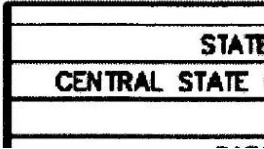
CURVE NO.	LENGTH	CHORD BEARING
C1	118.88'	818.13' N 82°50'07" W
C2	238.88'	818.13' S 78°05'28" W
C3	178.51'	888.23' S 77°15'28" W
C4	88.19'	188.60' N 78°30'48" W
C5	323.23'	400.00' S 31°54'20" W
C6	120.62'	450.00' S 48°27'07" W

LINE	BEARING	DISTANCE
A-B	N 23°28'57"	E 11378.80'
B-C	N 11°17'55"	E 11278.58'
C-D	S 87°15'12"	E 478.78'
A-E	N 28°58'58"	W 404.92'

ALL IMPROVEMENTS ARE A

### SURVEYOR'S NOTES

1. THIS SURVEY IS SUBJECT TO MATTERS WHICH MAY BE DISCLOSED BY A FULL AND ACCURATE TITLE SEARCH, INCLUDING BUT NOT LIMITED TO, ANY EASEMENTS OR RIGHTS OF WAY NOT SHOWN HEREON BUT WHICH MAY AFFECT THE PROPERTY HERE PLATTED.
2. IN MY OPINION NO NEW STREETS OR ROAD ARE TO BE CREATED OR NO NEW UTILITY IMPROVEMENTS ARE REQUIRED OR NO NEW SANITARY



### CONTACT

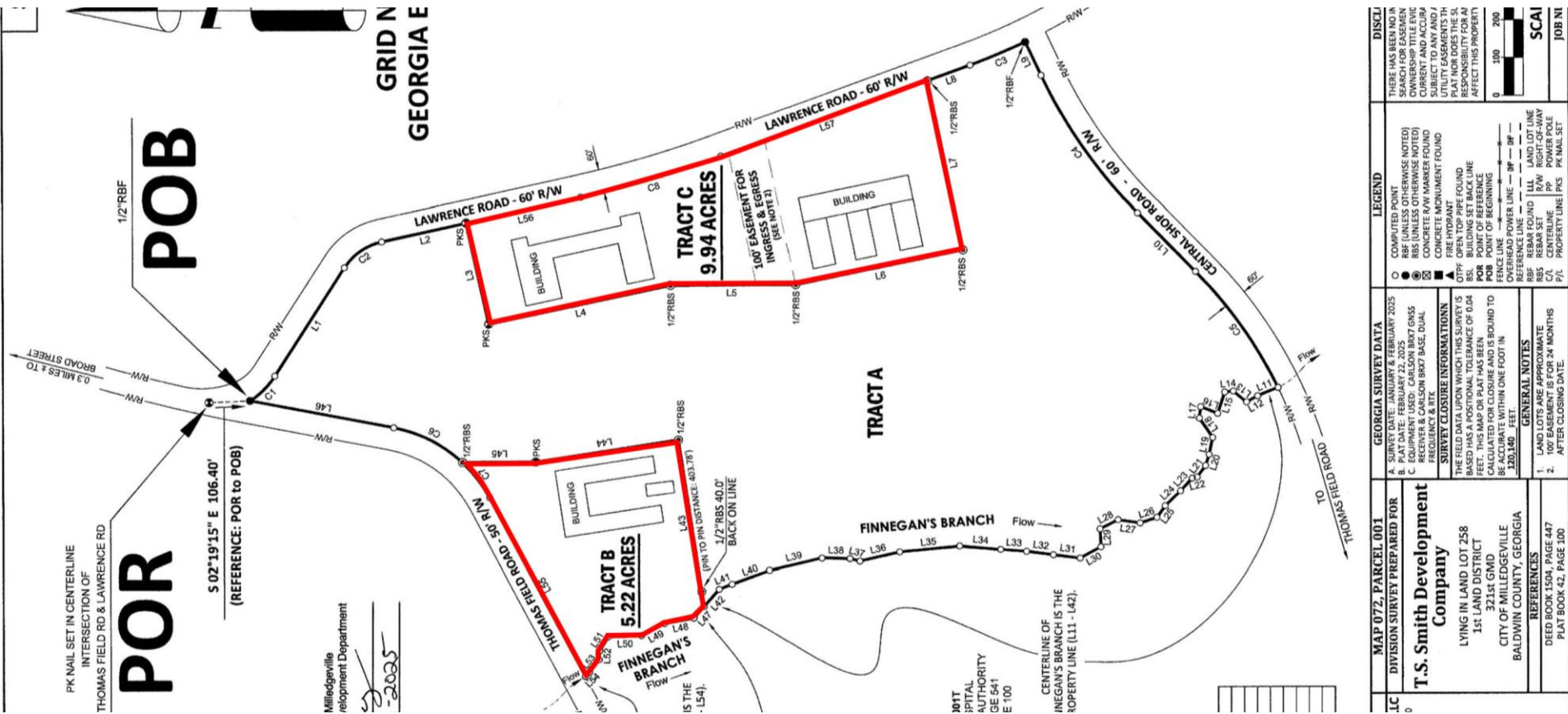
- Patty Burns, CCIM, ALC  
478-746-9421 Office  
478-951-5100 Cell  
patty@fickling.com
- Trip Wilhoit, CCIM, ALC  
478-746-9421 Office  
478-960-4080 Cell  
trip@fickling.com



577 Mulberry St, Suite 1100  
Macon, GA 31201  
478.746.9421 Office  
<https://commercial.fickling.com>



SCOTT STATE PRISON



CONTACT

Patty Burns, CCIM, ALC

478-746-9421 Office

478-951-5100 Cell

patty@fickling.com

Trip Wilhoit, CCIM, ALC

478-746-9421 Office

478-960-4080 Cell

trip@fickling.com



577 Mulberry St, Suite 1100

Macon, GA 31201

478.746.9421 Office

<https://commercial.fickling.com>

This information is from resources deemed to be reliable and is subject to change without notice. No warranties or guarantees for accuracy are made by Fickling and Company.



# Former Prisons For Sale (SOLD SEPARATELY)

Located in Renaissance Park (Formerly Central State Hospital Campus)

Milledgeville, GA 31061



Summary

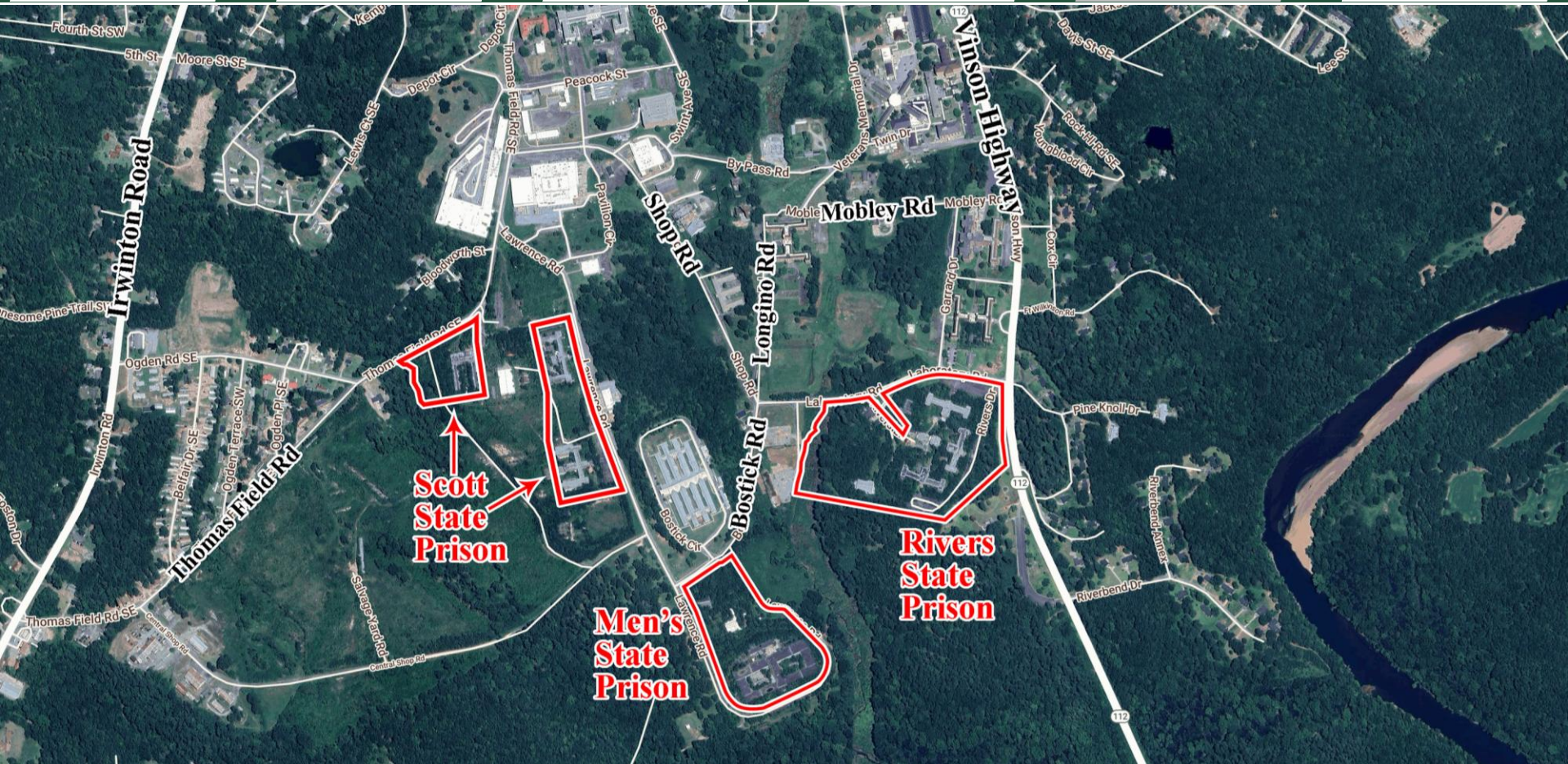
Area Info

Photos

Surveys

Aerial

Site Map



## CONTACT

**Patty Burns, CCIM, ALC**  
478-746-9421 Office  
478-951-5100 Cell  
[patty@fickling.com](mailto:patty@fickling.com)

**Trip Wilhoit, CCIM, ALC**  
478-746-9421 Office  
478-960-4080 Cell  
[trip@fickling.com](mailto:trip@fickling.com)



577 Mulberry St, Suite 1100  
Macon, GA 31201  
478.746.9421 Office  
<https://commercial.fickling.com>



# Former Prisons For Sale (SOLD SEPARATELY)

Located in Renaissance Park (Formerly Central State Hospital Campus)  
Milledgeville, GA 31061



Summary	Area Info	Photos	Surveys	Aerial	Site Map
---------	-----------	--------	---------	--------	----------



LEGEND:	KEY:
ALLEN	B-3
ARNALL	B-6
AUDITORIUM	F-2
BINION	G-3
BOLAND	C-2
BOONE	B-2
BOSTIC	E-8
BRANTLEY	F-3
CENTRAL KITCHEN	F-5
CENTRAL CHAPEL	E-1
CHAPEL #2	E-10
CHAPEL #3	B-7
CHAPEL #4	B-3
CHAPEL #5	C-1
COOK	A-11
CRITTENDEN	D-2
CSH LAUNDRY	E-5
CSH MUSEUM	F-3
DENTAL CLINIC	C-3
EWAC	B-12
FIRE STATION	C-6
FIRE TRAINING/POLICE	F-4
FREEMAN	B-7
GDC LAUNDRY	E-6
GREEN	E-2
GREENHOUSE	C-5
HOLLY	F-8
HOWELL	D-8
INGRAM	F-7
JONES	F-2
KEMPER	G-7
KIDD	A-11
LAWRENCE	G-5
MARY BROWN PAVILION	C-8
NURSING HOME CENTER	E-6
POST OFFICE	E-5
POWELL	E-3
POWELL ACTIVITY BLDG	F-4
RIVERS	C-7
RUSSELL	B-5
STAFF DORMS & APTS	F-4
VINSON	B-4
WALKER	E-2
WASHINGTON	D-10
WHEELER	C-4
WILKES	F-6
WOOD	B-4
YARBROUGH	E-5

**RENAISSANCE PARK**  
MILLEDGEVILLE, GA 31062

CONTACT

<b>Patty Burns, CCIM, ALC</b> 478-746-9421 Office 478-951-5100 Cell patty@fickling.com	<b>Trip Wilhoit, CCIM, ALC</b> 478-746-9421 Office 478-960-4080 Cell trip@fickling.com
---	---



577 Mulberry St, Suite 1100  
Macon, GA 31201  
478.746.9421 Office  
<https://commercial.fickling.com>