

Former Prisons For Sale (SOLD SEPARATELY)

Located in Renaissance Park (Formerly Central State Hospital Campus)
Milledgeville, GA 31061



Summary

Area Info

Photos

Surveys

Aerial

Site Map



RIVERS STATE PRISON PRICE: \$349,000
SCOTT STATE PRISON PRICE: \$200,000

CONTACT

Patty Burns, CCIM, ALC
478-746-9421 Office
478-951-5100 Cell
patty@fickling.com

Trip Wilhoit, CCIM, ALC
478-746-9421 Office
478-960-4080 Cell
trip@fickling.com

Jonathan Schuemann
478-746-9421 Office
561-676-4633 Cell
jonathan@fickling.com



577 Mulberry St, Suite 1100
Macon, GA 31201
478.746.9421 Office
<https://commercial.fickling.com>

Former Prisons For Sale (SOLD SEPARATELY)

Located in Renaissance Park (Formerly Central State Hospital Campus)
Milledgeville, GA 31061



Summary

Area Info

Photos

Surveys

Aerial

Site Map

Rivers Prison

Rivers Prison complex consists of three main buildings. One building is 4 floors, the remaining two are 3 floors. Total square footage across all three buildings is 212,300 SF. All utilities available to all buildings. The Dental Clinic and Gym are sold separate.

Scott State Prison (Can be divided & Buildings Sold Separately)

Scott State Prison complex consists of three buildings. The Kemper building is 59,436 SF over 2 floors, the Ingram building is 96,360 SF over 3 floors, and the Holly building is 147,896 SF over 3 floors. All utilities available to all buildings. (Can be divided & Buildings Sold Separately)



CONTACT

Patty Burns, CCIM, ALC
478-746-9421 Office
478-951-5100 Cell
patty@fickling.com

Trip Wilhoit, CCIM, ALC
478-746-9421 Office
478-960-4080 Cell
trip@fickling.com

Jonathan Schuemann
478-746-9421 Office
561-676-4633 Cell
jonathan@fickling.com



577 Mulberry St, Suite 1100
Macon, GA 31201
478.746.9421 Office
<https://commercial.fickling.com>

Former Prisons For Sale (SOLD SEPARATELY)

Located in Renaissance Park (Formerly Central State Hospital Campus)
Milledgeville, GA 31061



Summary

Area Info

Photos

Surveys

Aerial

Site Map

RIVERS STATE PRISON



CONTACT

Patty Burns, CCIM, ALC
478-746-9421 Office
478-951-5100 Cell
patty@fickling.com

Trip Wilhoit, CCIM, ALC
478-746-9421 Office
478-960-4080 Cell
trip@fickling.com

Jonathan Schuemann
478-746-9421 Office
561-676-4633 Cell
jonathan@fickling.com



577 Mulberry St, Suite 1100
Macon, GA 31201
478.746.9421 Office
<https://commercial.fickling.com>

Former Prisons For Sale (SOLD SEPARATELY)

Located in Renaissance Park (Formerly Central State Hospital Campus)
Milledgeville, GA 31061



Summary

Area Info

Photos

Surveys

Aerial

Site Map

SCOTT STATE PRISON (Can be divided & Buildings Sold Separately)



CONTACT

Patty Burns, CCIM, ALC
478-746-9421 Office
478-951-5100 Cell
patty@fickling.com

Trip Wilhoit, CCIM, ALC
478-746-9421 Office
478-960-4080 Cell
trip@fickling.com

Jonathan Schuemann
478-746-9421 Office
561-676-4633 Cell
jonathan@fickling.com



577 Mulberry St, Suite 1100
Macon, GA 31201
478.746.9421 Office
<https://commercial.fickling.com>

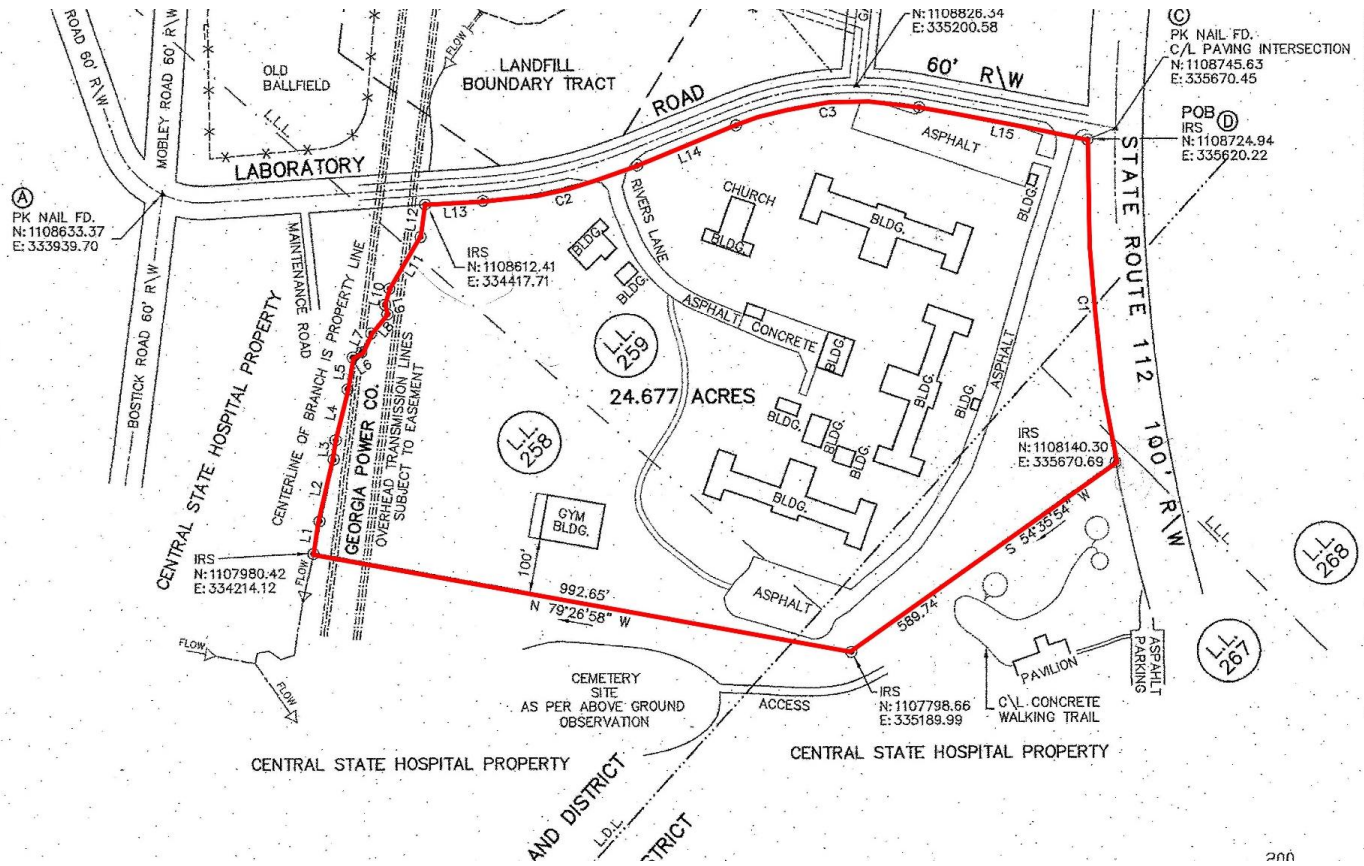
Former Prisons For Sale (SOLD SEPARATELY)

Located in Renaissance Park (Formerly Central State Hospital Campus)
Milledgeville, GA 31061



- Summary
- Area Info
- Photos
- Surveys
- Aerial
- Site Map

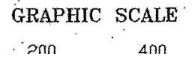
RIVERS STATE PRISON



SURVEY

I hereby certify to all parties otherwise stated hereinafter as the Land surveyed and plotted hereon, and is in compliance with (1) (2) OCCA §§ 15-6-57 - 69 (3) all applicable local, county, specifications; (C) Shows that 44-4-20 - 31 as amended the Coordinate System of 1985, E of at least two permanent monuments Survey Feet, and also shows within 500 feet of any point of reference shown thereon; (D) North, Georgia Coordinate System corners have been established monuments which have been (F) Labels hereon a point of boundary; (G) Shows hereon in symbols used; (H) Shows hereon this plot; (I) is eligible for recording Clerk of Superior Court of any partially lies; and (J) incorporates that certain survey agreement and GA. DEPT. OF CORRECTIONS area map indicating the location Dated the 5th, day of, MAY

J.B. Faircloth
J.B. Faircloth
229-273-1282 ext. 13
229-273-2340
GEORGIA REGISTERED LAND



CONTACT

Patty Burns, CCIM, ALC
478-746-9421 Office
478-951-5100 Cell
patty@fickling.com

Trip Wilhoit, CCIM, ALC
478-746-9421 Office
478-960-4080 Cell
trip@fickling.com

Jonathan Schuemann
478-746-9421 Office
561-676-4633 Cell
jonathan@fickling.com



577 Mulberry St, Suite 1100
Macon, GA 31201
478.746.9421 Office
https://commercial.fickling.com

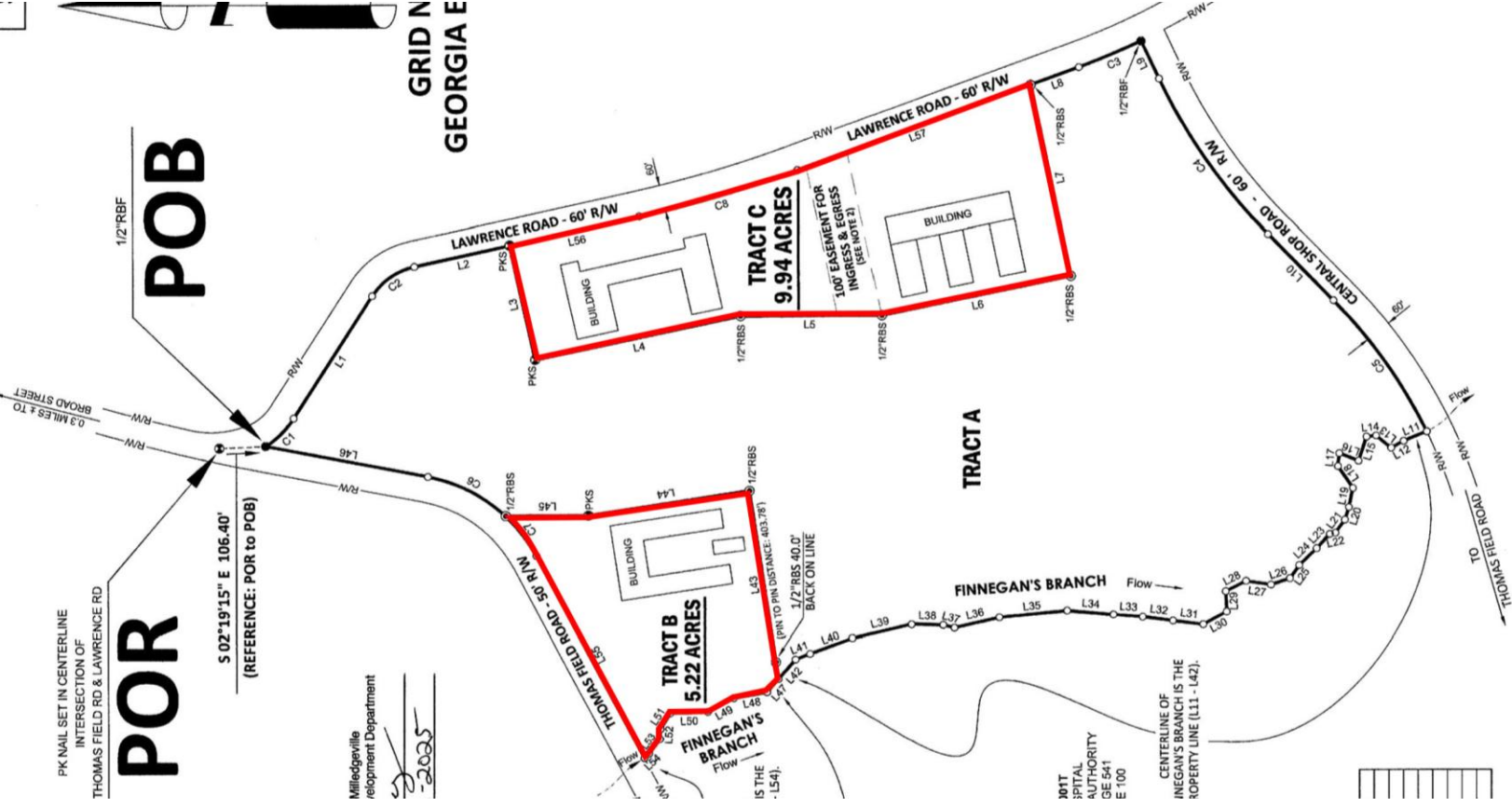
Former Prisons For Sale (SOLD SEPARATELY)

Located in Renaissance Park (Formerly Central State Hospital Campus)
Milledgeville, GA 31061



- Summary
- Area Info
- Photos
- Surveys
- Aerial
- Site Map

SCOTT STATE PRISON



DISCU	<p>THERE HAS BEEN NO IN-SEARCH FOR EASEMENTS, ENCUMBRANCES, OR UTILITY EASEMENTS SUBJECT TO ANY AND ALL PLAT RECORDS THE STATE OF GEORGIA THAT MAY AFFECT THIS PROPERTY.</p>
	<p>LEGEND</p> <ul style="list-style-type: none"> ○ COMPUTED POINT ● REF (UNLESS OTHERWISE NOTED) ● CONCRETE NAIL MARKER FOUND ● FIRE HYDRANT ○ OFF: OPEN TOP PIPE FOUND ● BUILDING SET BACK LINE ● FENCE LINE ● POINT OF BEGINNING — OVERHEAD POWER LINE — BF — BF — REFERENCE LINE AND LAND LOT LINE — REBAS SET — RW — RIGHT-OF-WAY — C/L — CENTERLINE — P/L — PROPERTY LINE
SCAL	<p>0 100 200</p>
JOB N	
<p>GEORGIA SURVEY DATA</p> <p>A. SURVEY DATE: JANUARY & FEBRUARY 2025 B. PLAT DATE: FEBRUARY 22, 2025 C. RECEIVER: CARLSON BRX7 BASE, DUAL FREQUENCY & RTK</p>	
<p>SURVEY CLOSURE INFORMATION</p> <p>THE FIELD DATA UPON WHICH THIS SURVEY IS BASED HAS A POSITIONAL TOLERANCE OF 0.04 FEET. THIS MAP OR PLAT HAS BEEN PREPARED TO BE ACCURATE WITHIN ONE FOOT IN 120.140 FEET.</p>	
<p>GENERAL NOTES</p> <ol style="list-style-type: none"> LAND LOTS ARE APPROXIMATE 100' EASEMENT IS FOR 24 MONTHS AFTER CLOSING DATE. 	
MAP 072, PARCEL 001	
DIVISION SURVEY PREPARED FOR	
T.S. Smith Development Company	
LIVING IN LAND LOT 258	
151 LAND DISTRICT	
32141 GMD	
CITY OF MILLEDGEVILLE	
BALDWIN COUNTY, GEORGIA	
REFERENCES	
DEED BOOK 1504, PAGE 447	
PLAT BOOK 42, PAGE 100	

CONTACT

Patty Burns, CCIM, ALC
 478-746-9421 Office
 478-951-5100 Cell
 patty@fickling.com

Trip Wilhoit, CCIM, ALC
 478-746-9421 Office
 478-960-4080 Cell
 trip@fickling.com

Jonathan Schuemann
 478-746-9421 Office
 561-676-4633 Cell
 jonathan@fickling.com



577 Mulberry St, Suite 1100
 Macon, GA 31201
 478.746.9421 Office
<https://commercial.fickling.com>

This information is from resources deemed to be reliable and is subject to change without notice. No warranties or guarantees for accuracy are made by Fickling and Company.

Former Prisons For Sale (SOLD SEPARATELY)

Located in Renaissance Park (Formerly Central State Hospital Campus)
Milledgeville, GA 31061



Summary

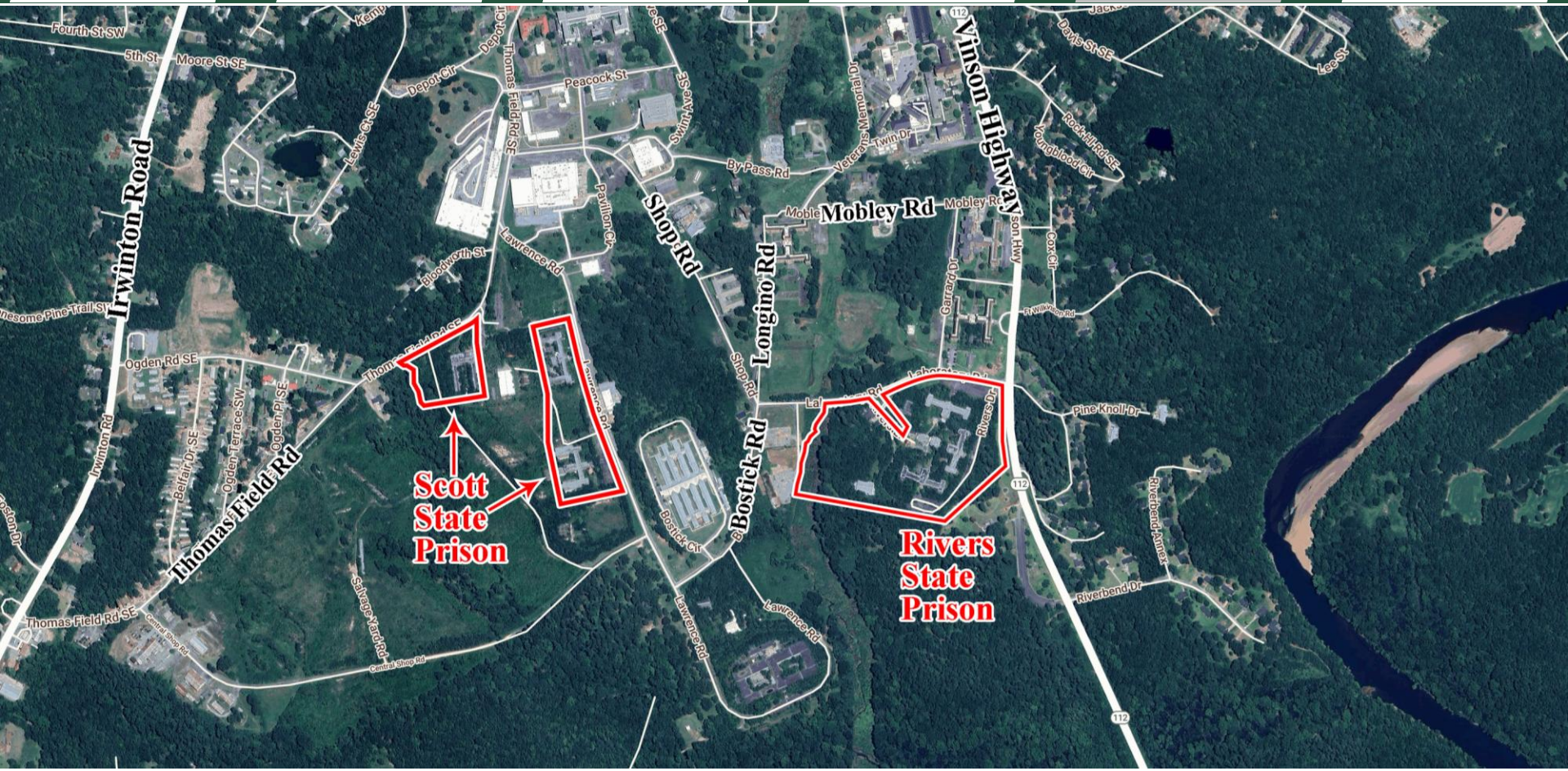
Area Info

Photos

Surveys

Aerial

Site Map



CONTACT

Patty Burns, CCIM, ALC
478-746-9421 Office
478-951-5100 Cell
patty@fickling.com

Trip Wilhoit, CCIM, ALC
478-746-9421 Office
478-960-4080 Cell
trip@fickling.com

Jonathan Schuemann
478-746-9421 Office
561-676-4633 Cell
jonathan@fickling.com



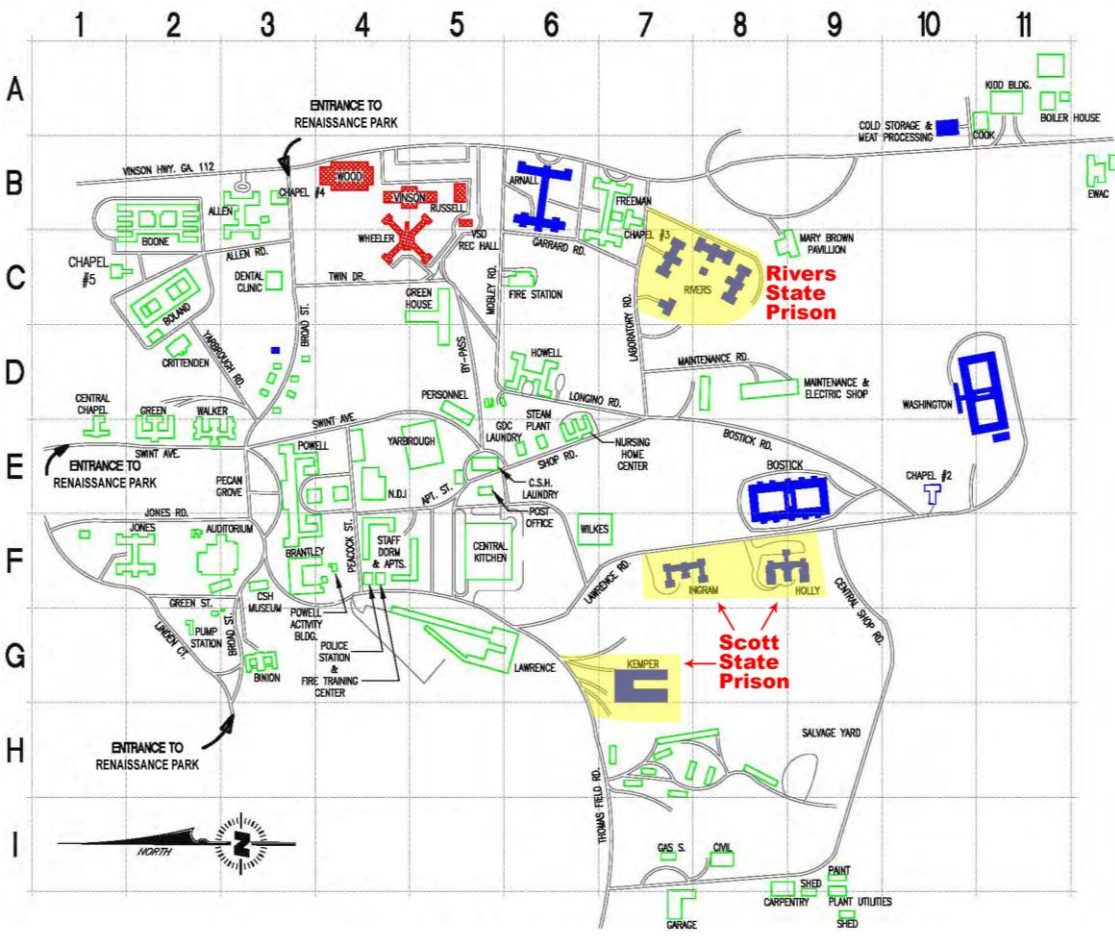
577 Mulberry St, Suite 1100
Macon, GA 31201
478.746.9421 Office
<https://commercial.fickling.com>

Former Prisons For Sale (SOLD SEPARATELY)

Located in Renaissance Park (Formerly Central State Hospital Campus)
Milledgeville, GA 31061



Summary	Area Info	Photos	Surveys	Aerial	Site Map
---------	-----------	--------	---------	--------	----------



LEGEND:

- ALLEN
- ARNALL
- AUDITORIUM
- BINON
- BOLAND
- BOONE
- BOSTIC
- BRANTLEY
- CENTRAL KITCHEN
- CENTRAL CHAPEL
- CHAPEL #2
- CHAPEL #3
- CHAPEL #4
- CHAPEL #5
- COOK
- CRITTENDEN
- CSH LAUNDRY
- CSH MUSEUM
- DENTAL CLINIC
- EWAC
- FIRE STATION
- FIRE TRAINING/POLICE
- FREEMAN
- GDC LAUNDRY
- GREEN
- GREENHOUSE
- HOLLY
- HOWELL
- INGRAM
- JONES
- KEMPER
- KIDD
- LAWRENCE
- MARY BROWN PAVILION
- NURSING HOME CENTER
- POST OFFICE
- POWELL
- POWELL ACTIVITY BLDG
- RIVERS
- RUSSELL
- STAFF DORMS & APTS
- VINSON
- WALKER
- WASHINGTON
- WHEELER
- WILKES
- WOOD
- YARBROUGH

KEY:

- B-3
- B-6
- F-2
- G-3
- C-2
- B-2
- E-8
- F-3
- F-5
- E-10
- B-7
- B-3
- C-1
- A-11
- D-2
- E-5
- F-3
- C-3
- B-12
- C-6
- F-4
- B-7
- E-6
- E-2
- C-5
- F-8
- D-8
- F-7
- F-2
- G-7
- A-11
- G-5
- C-8
- E-6
- E-5
- E-3
- F-4
- C-7
- B-5
- F-4
- B-4
- E-2
- D-10
- C-4
- F-6
- B-4
- E-5

RENAISSANCE PARK
MILLEDGEVILLE, GA 31062

CONTACT

Patty Burns, CCIM, ALC
478-746-9421 Office
478-951-5100 Cell
patty@fickling.com

Trip Wilhoit, CCIM, ALC
478-746-9421 Office
478-960-4080 Cell
trip@fickling.com

Jonathan Schuemann
478-746-9421 Office
561-676-4633 Cell
jonathan@fickling.com



577 Mulberry St, Suite 1100
Macon, GA 31201
478.746.9421 Office
https://commercial.fickling.com

This information is from resources deemed to be reliable and is subject to change without notice. No warranties or guarantees for accuracy are made by Fickling and Company.