

FOR SALE – Church on 1.93 Acres
2430 Shurling Drive
Macon, GA 31211



Summary

Area Info

Photos

Floor Plan

Aerial



REDUCED PRICE: \$299,000.00 ~~SALE PRICE: \$320,000.00~~

CONTACT

Lan Heath
478-746-9421 Office
478-731-5899 Cell
lheath@fickling.com



577 Mulberry St, Suite 1100
Macon, GA 31201
478.746.9421 Office
<https://commercial.fickling.com>

This information is from resources deemed to be reliable and is subject to change without notice. No warranties or guarantees for accuracy are made by Fickling and Company.

FOR SALE – Church on 1.93 Acres
2430 Shurling Drive
Macon, GA 31211



Summary	Area Info	Photos	Floor Plan	Aerial
---------	-----------	--------	------------	--------

PROPERTY INFORMATION

BUILDING

Property Address: 2430 Shurling Drive
Macon, GA 31211

County: Bibb/Jones

Topography: Fairly Level

Frontage: 190’ wide
500’ deep

Total Size: 6,382± SF

Year Built: 1970

Ceiling Height: 7’ – 19’ 6”

Utilities: Water, Three Phase Power,
Gas, & Telecom

Parking: 50± spaces

Traffic Count: Shurling Drive – 12,999 VPD

SITE

Site Size: 1.93 Acres

Parcel ID: T0620359
M08C00 015

Zoning: R1-A

REDUCED PRICE: \$299,000.00
~~SALE PRICE: \$320,000.00~~

Demographics 2024	1 Mile	3 Miles	5 Miles
Population	5,976	22,740	44,097
Avg HH Income	\$57,883	\$55,378	\$62,477
Median Age	37.8	36.9	35.9

CONTACT

Lan Heath
478-746-9421 Office
478-731-5899 Cell
lheath@fickling.com



577 Mulberry St, Suite 1100
Macon, GA 31201
478.746.9421 Office
<https://commercial.fickling.com>

FOR SALE – Church on 1.93 Acres

2430 Shurling Drive

Macon, GA 31211

[Summary](#)[Area Info](#)[Photos](#)[Floor Plan](#)[Aerial](#)

PROPERTY INFORMATION

NOTES

This sale includes two parcels totaling 1.93 acres: one parcel of 1.50 acres with a 6,382± sq. ft. church building, and another parcel of 0.43 acres. **The sanctuary portion of the building has a metal roof, the remainder of the building has a rolled-rubber flat roof, both of which were replaced in May 2023.** Located in both Bibb and Jones counties, the property has excellent visibility with frontage along Shurling Drive and features a lit monument sign.

LOCATION

Property is located approximately 4 miles from Downtown Macon and 16 miles from the city of Gray. Surrounding neighbors include Family Dollar, Dollar General, Daily Dealz, iStorage, Sakura Japanese Restaurant, Cadence Bank, Georgia Army National Guard Readiness Center, Walmart, Ole Times County Buffet, Magic Mechanic Macon, Macon-Bibb County Fire Department, Richard R. Robinson Funeral Home, Georgia Environmental Protection Division, and many more businesses, retailers, and restaurants.



CONTACT

Lan Heath

478-746-9421 Office

478-731-5899 Cell

lheath@fickling.com



577 Mulberry St, Suite 1100

Macon, GA 31201

478.746.9421 Office

<https://commercial.fickling.com>

FOR SALE – Church on 1.93 Acres

2430 Shurling Drive
Macon, GA 31211



Summary

Area Info

Photos

Floor Plan

Aerial



CONTACT

Lan Heath
478-746-9421 Office
478-731-5899 Cell
lheath@fickling.com



577 Mulberry St, Suite 1100
Macon, GA 31201
478.746.9421 Office
<https://commercial.fickling.com>

FOR SALE – Church on 1.93 Acres
2430 Shurling Drive
Macon, GA 31211



Summary

Area Info

Photos

Floor Plan

Aerial



CONTACT

Lan Heath
478-746-9421 Office
478-731-5899 Cell
lheath@fickling.com



577 Mulberry St, Suite 1100
Macon, GA 31201
478.746.9421 Office
<https://commercial.fickling.com>

FOR SALE – Church on 1.93 Acres

2430 Shurling Drive
Macon, GA 31211



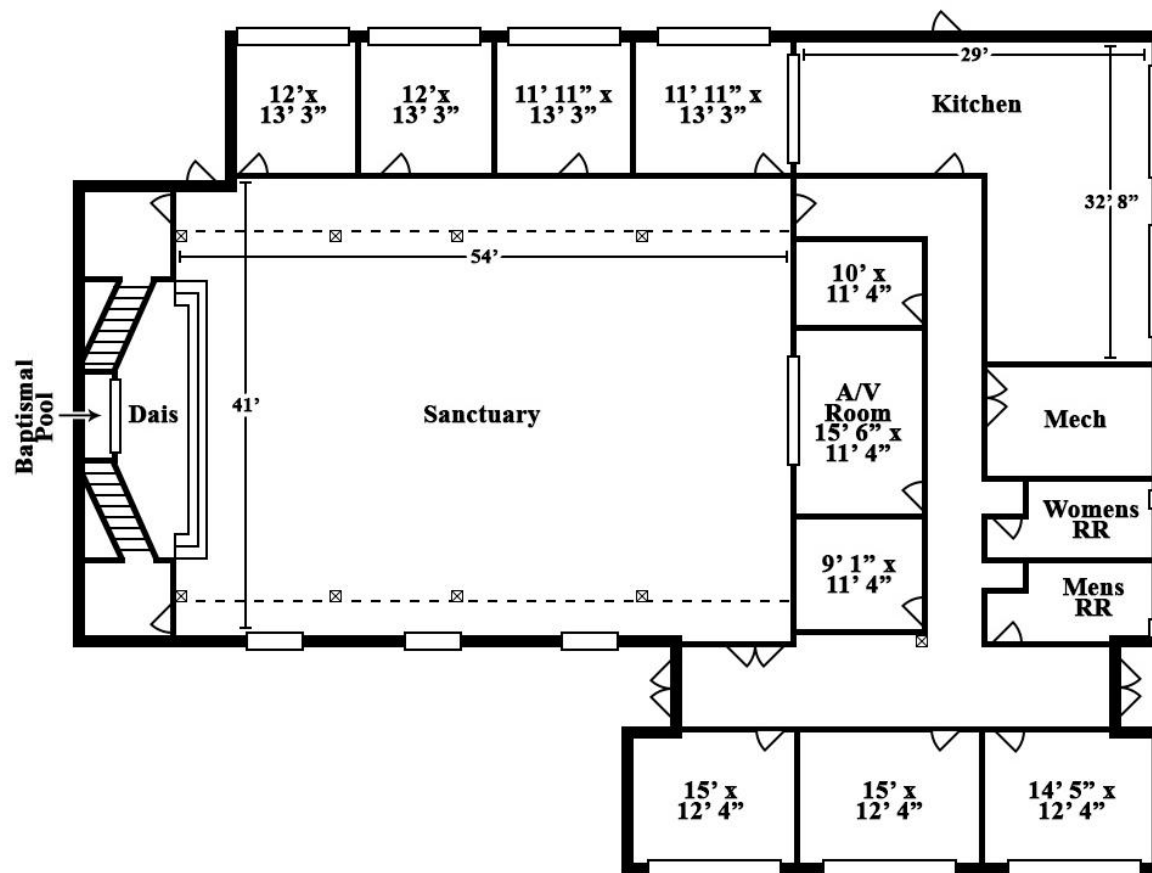
Summary

Area Info

Photos

Floor Plan

Aerial



*All measurements and all calculations of area are approximate and not guaranteed

CONTACT

Lan Heath
478-746-9421 Office
478-731-5899 Cell
lheath@fickling.com



577 Mulberry St, Suite 1100
Macon, GA 31201
478.746.9421 Office
<https://commercial.fickling.com>

FOR SALE – Church on 1.93 Acres

2430 Shurling Drive
Macon, GA 31211



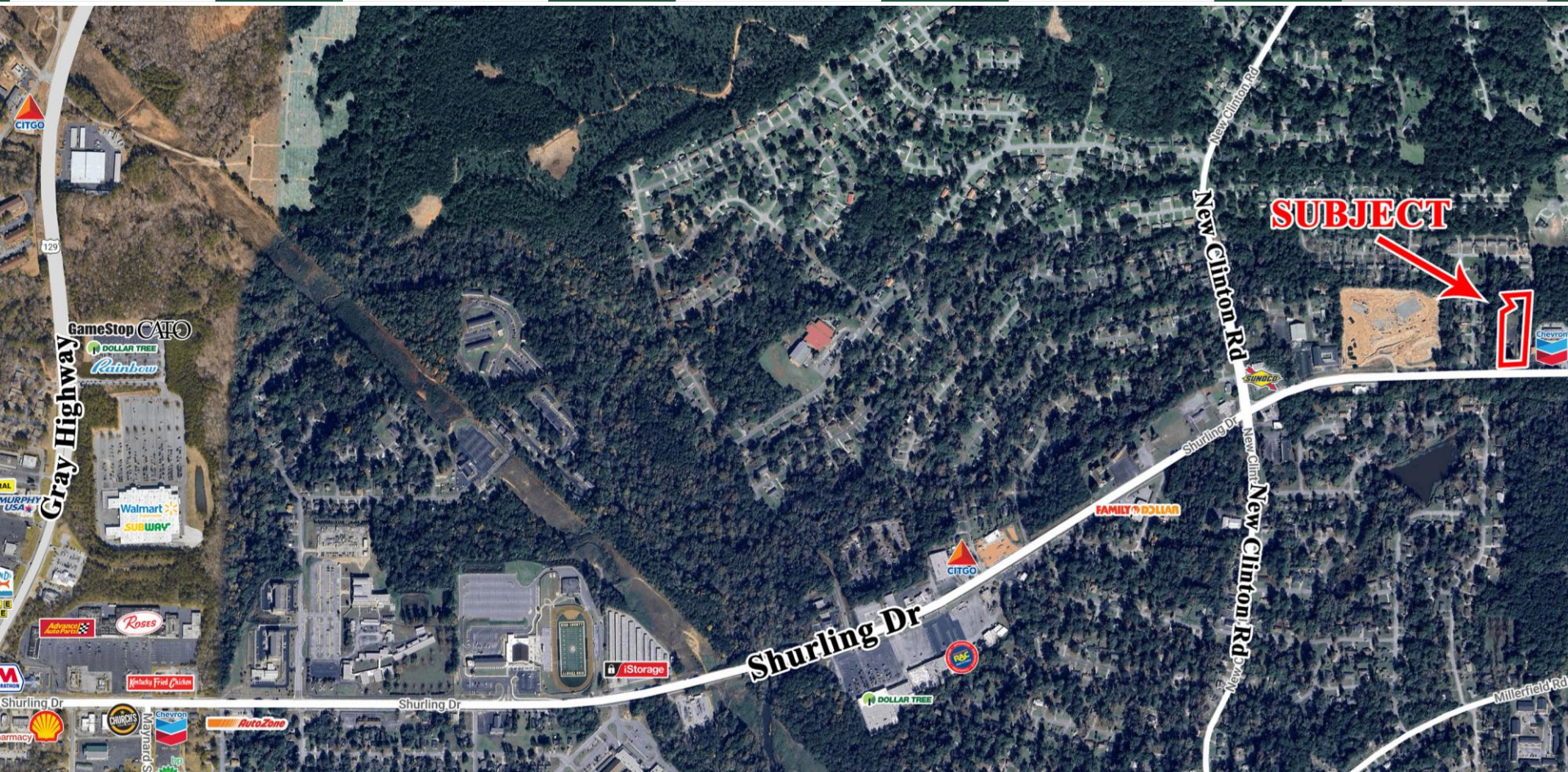
Summary

Area Info

Photos

Floor Plan

Aerial



CONTACT

Lan Heath
478-746-9421 Office
478-731-5899 Cell
lheath@fickling.com



577 Mulberry St, Suite 1100
Macon, GA 31201
478.746.9421 Office
<https://commercial.fickling.com>