

# VEHICLE & RV SERVICE CENTER FOR SALE

1002 East 11th Avenue  
Cordele, GA 31015



Summary

Area Info

Photos

Aerial

Site Map



## CONTACT

**Wendy H Pierce, RPA**  
478-746-9421 Office  
478-335-1254 Cell  
wpierce@fickling.com



577 Mulberry St, Suite 1100  
Macon, GA 31201  
478.746.9421 Office  
<https://commercial.fickling.com>

This information is from resources deemed to be reliable and is subject to change without notice. No warranties or guarantees for accuracy are made by Fickling and Company.

# VEHICLE & RV SERVICE CENTER FOR SALE

1002 East 11th Avenue  
Cordele, GA 31015



Summary

Area Info

Photos

Aerial

Site Map

## PROPERTY INFORMATION

### BUILDING

**Property Address:** 1002 East 11<sup>th</sup> Avenue  
Cordele, GA 31015

**County:** Crisp

**Total Size:** 2,960 SF  
Shop Area - 2,072 SF  
Office Area - 888 SF

**Year Built:** 1989, 1992

**Property Taxes:** \$1,338.94 (2025 est.)

**Utilities:** Electric, Private well, Septic

**Parking:** Ample, on-site

**Traffic Count:** South Pecan Street - 4,360 VPD  
East 16<sup>th</sup> Avenue - 15,200 VPD

### SITE

**Site Size:** 0.74 Acres

**Parcel ID:** C25 074

**Zoning:** LI (Light Industrial)

**SALE PRICE: \$250,000.00**

Demographics 2025	1 Mile	3 Miles	5 Miles
Population	3,955	12,060	14,481
Avg HH Income	\$57,687	\$54,921	\$61,550
Median Age	37.3	37.5	38.4

### CONTACT

**Wendy H Pierce, RPA**  
478-746-9421 Office  
478-335-1254 Cell  
wpierce@fickling.com



577 Mulberry St, Suite 1100  
Macon, GA 31201  
478.746.9421 Office  
<https://commercial.fickling.com>

# VEHICLE & RV SERVICE CENTER FOR SALE

1002 East 11th Avenue  
Cordele, GA 31015



Summary

Area Info

Photos

Aerial

Site Map

## AREA INFORMATION

### PROPERTY

This vehicle and RV service garage is available for sale! This shop is one of the only locations in the immediate area that can service RVs. Workshop area has six (6) 12' roll up doors and one (1) 16' roll up door.

### LOCATION

Located off one of Cordele's main corridors with many national retail and restaurant establishments. Neighboring businesses include Complete Tire & Service, Deep South Power Equipment, Williams-Pitts Oil, and Security Mini Storage. Cordele is situated 2 hours from Atlanta, and 1½ hours from the Georgia-Florida state line. Two major railways intersect in Cordele, and Interstate Highways converge, making it a major transportation hub. Cordele also has Inland Port designation.



### CONTACT

**Wendy H Pierce, RPA**  
478-746-9421 Office  
478-335-1254 Cell  
wpierce@fickling.com



577 Mulberry St, Suite 1100  
Macon, GA 31201  
478.746.9421 Office  
<https://commercial.fickling.com>

# VEHICLE & RV SERVICE CENTER FOR SALE

1002 East 11th Avenue  
Cordele, GA 31015



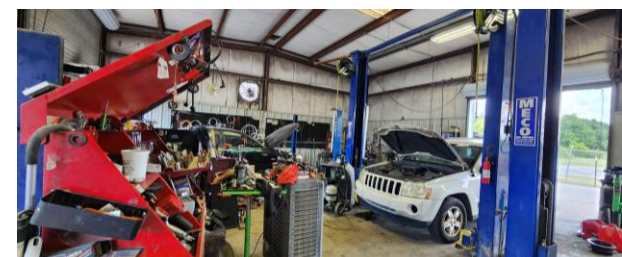
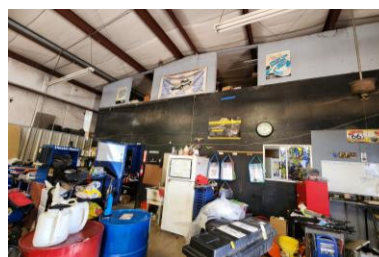
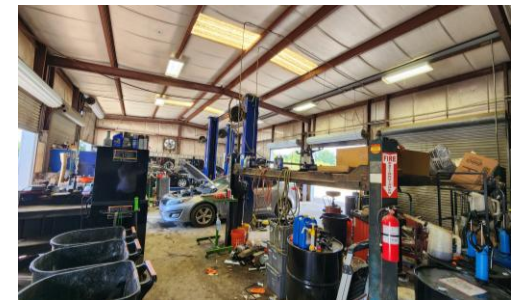
Summary

Area Info

Photos

Aerial

Site Map



## CONTACT

**Wendy H Pierce, RPA**  
478-746-9421 Office  
478-335-1254 Cell  
wpierce@fickling.com



577 Mulberry St, Suite 1100  
Macon, GA 31201  
478.746.9421 Office  
<https://commercial.fickling.com>

# VEHICLE & RV SERVICE CENTER FOR SALE

1002 East 11th Avenue  
Cordele, GA 31015



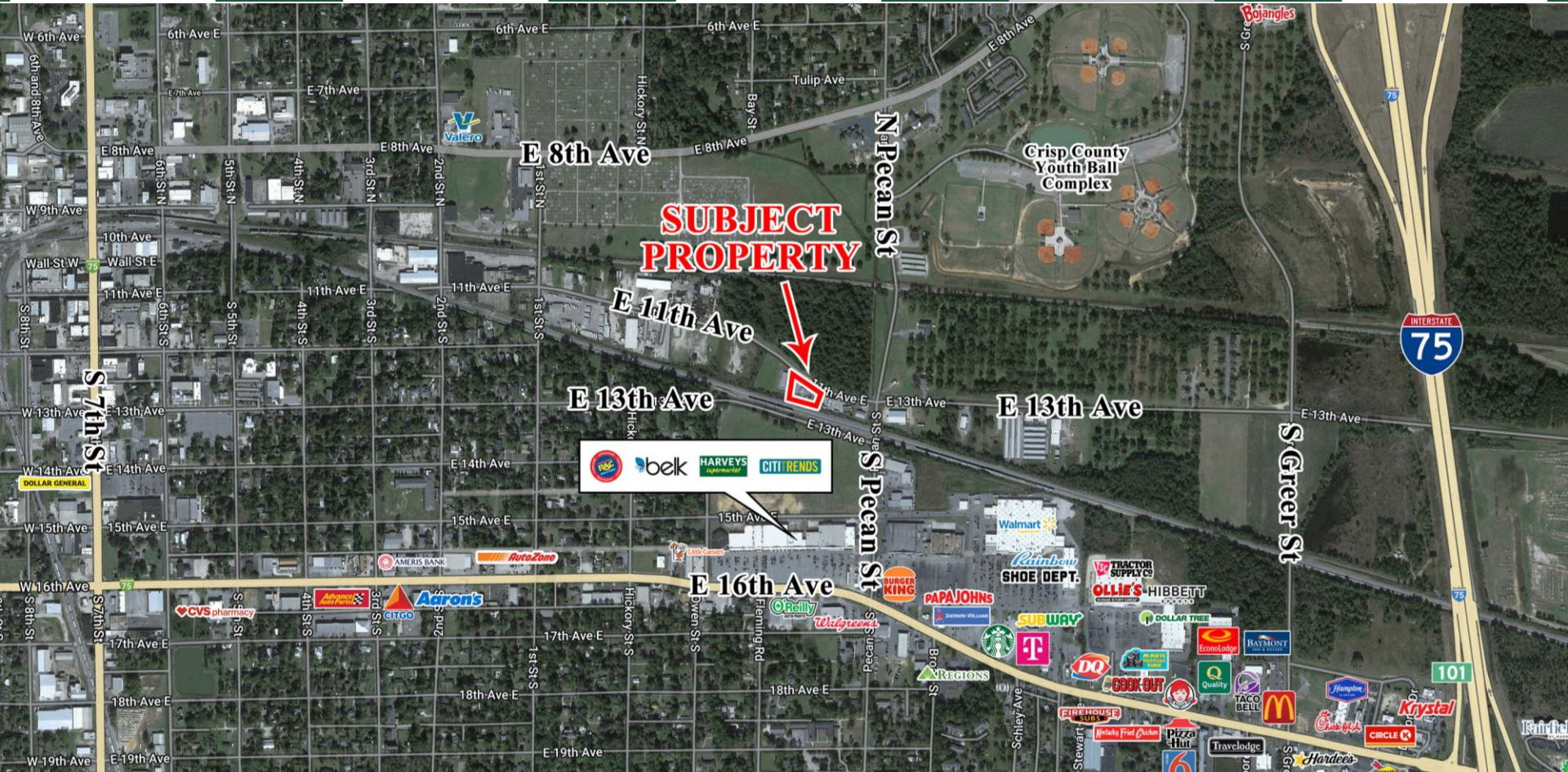
Summary

Area Info

Photos

Aerial

Site Map



## CONTACT

**Wendy H Pierce, RPA**  
478-746-9421 Office  
478-335-1254 Cell  
wpierce@fickling.com



577 Mulberry St, Suite 1100  
Macon, GA 31201  
478.746.9421 Office  
<https://commercial.fickling.com>

# VEHICLE & RV SERVICE CENTER FOR SALE

1002 East 11th Avenue  
Cordele, GA 31015



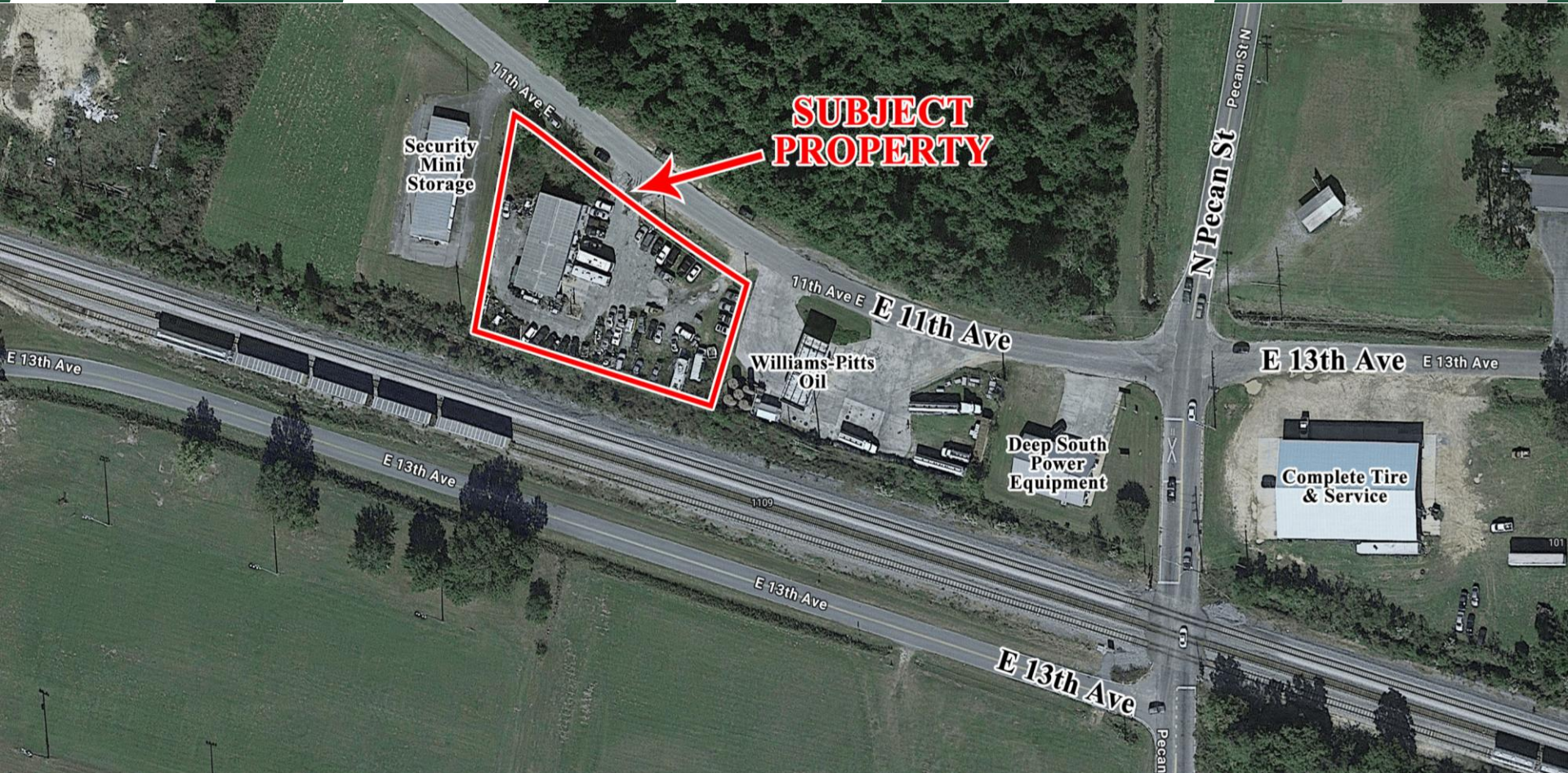
Summary

Area Info

Photos

Aerial

Site Map



## CONTACT

**Wendy H Pierce, RPA**  
478-746-9421 Office  
478-335-1254 Cell  
wpierce@fickling.com



577 Mulberry St, Suite 1100  
Macon, GA 31201  
478.746.9421 Office  
<https://commercial.fickling.com>