



**AVAILABLE
1,319 SF**

**AVAILABLE
2,035 SF**

**AVAILABLE
2,765 SF**

CONTACT

Wendy H Pierce, RPA
478-746-9421 Office
478-335-1254 Cell
wpierce@fickling.com

Tommy Ricks III
478-953-2244 Office
478-998-5030 Cell
tommyricks@fickling.com



577 Mulberry St, Suite 1100
Macon, GA 31201
478.746.9421 Office
<https://commercial.fickling.com>

PROPERTY INFORMATION

BUILDING

Property Address: 1530 Mercer University Drive
 Macon, GA 31201

County: Bibb

Total Size: 12,800 SF

Available: **Suite 100: 2,765 SF**
Suite 300: 2,035 SF
Suite 500: 1,319 SF

Parking: 263 Spaces (shared)

Traffic Count: 70,100 VPD - I-75
 22,000 VPD - Mercer University Dr.

SITE

Parcel ID: P081-0605

Zoning: PDE

Year Built: 2016

Demographics 2025	1 Mile	3 Miles	5 Miles	7 Miles
Population	9,270	49,760	86,869	123,734
Avg HH Income	\$46,892	\$55,223	\$64,374	\$74,594
Median Age	30.7	33.8	34.1	35.7

LEASE PRICE: \$20.00/SF NNN

CONTACT

Wendy H Pierce, RPA
 478-746-9421 Office
 478-335-1254 Cell
 wpierce@fickling.com

Tommy Ricks III
 478-953-2244 Office
 478-998-5030 Cell
 tommyricks@fickling.com



577 Mulberry St, Suite 1100
 Macon, GA 31201
 478.746.9421 Office
<https://commercial.fickling.com>

Retail Suites For Lease | Mercer Landing

1530 Mercer University Drive

Macon, GA 31204



Summary

Area Info

Photos

Aerial

Site Map

AREA INFORMATION

NOTES

Three suites available in this multi-building retail center!

- **Suite 100:** 2,675 SF endcap space with drive-thru window.
- **Suite 300:** 2,035 SF inline space, second generation restaurant with hood, microbrew tap lines, and walk-in coolers.
- **Suite 500:** 1,319 SF endcap space, second generation restaurant equipped with hood and drive-thru window.

All suites have in-ground 1,500-gallon grease traps. Spaces are ideal for restaurant or retail concepts seeking exposure in an exuberant mixed-use environment.

Unmatched visibility and high foot traffic driven by:

- Over 9,200 enrolled students at Mercer University
- 619 student housing beds on-site
- 195 hotel rooms between TownePlace Suites (94 rooms) and Hilton Garden Inn (101 rooms)
- Walkable access via pedestrian bridge to Mercer campus and stadiums

CONTACT

Wendy H Pierce, RPA
478-746-9421 Office
478-335-1254 Cell
wpierce@fickling.com

Tommy Ricks III
478-953-2244 Office
478-998-5030 Cell
tommyricks@fickling.com

LOCATION

Conveniently located off I-75 and Mercer University Drive in a high traffic restaurant & retail corridor with multiple access points. Great visibility in prime location across from main entrance to Mercer University and Mercer Bears football stadium. Co-tenants include AT&T, Osaka Hibachi & Sushi, Insomnia Cookies, Papa John's, and Amici Pizza & Wings.

Close proximity to:

- Middle Georgia Regional Airport (9.1 miles) - supports business travel and logistics
- Atrium Health Amphitheater (2.7 miles) - 10,000 seat venue adding regional entertainment traffic



577 Mulberry St, Suite 1100
Macon, GA 31201
478.746.9421 Office
<https://commercial.fickling.com>

Retail Suites For Lease | Mercer Landing

1530 Mercer University Drive
Macon, GA 31204



Summary

Area Info

Photos

Aerial

Site Map



CONTACT

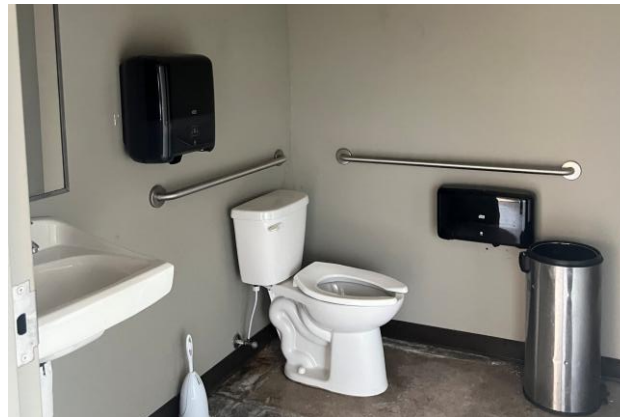
Wendy H Pierce, RPA
478-746-9421 Office
478-335-1254 Cell
wpierce@fickling.com

Tommy Ricks III
478-953-2244 Office
478-998-5030 Cell
tommyricks@fickling.com



577 Mulberry St, Suite 1100
Macon, GA 31201
478.746.9421 Office
<https://commercial.fickling.com>

SUITE 100



CONTACT

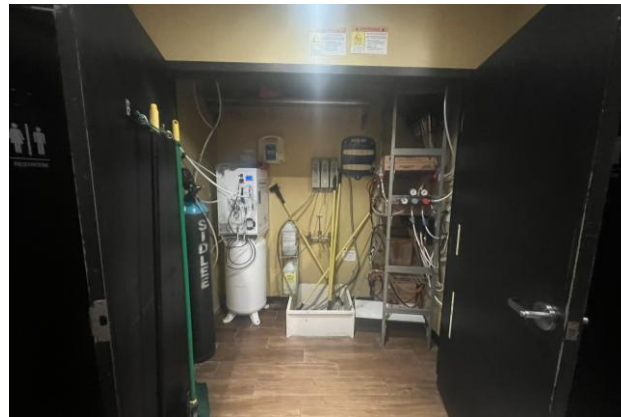
Wendy H Pierce, RPA
478-746-9421 Office
478-335-1254 Cell
wpierce@fickling.com

Tommy Ricks III
478-953-2244 Office
478-998-5030 Cell
tommyricks@fickling.com



577 Mulberry St, Suite 1100
Macon, GA 31201
478.746.9421 Office
<https://commercial.fickling.com>

SUITE 300



CONTACT

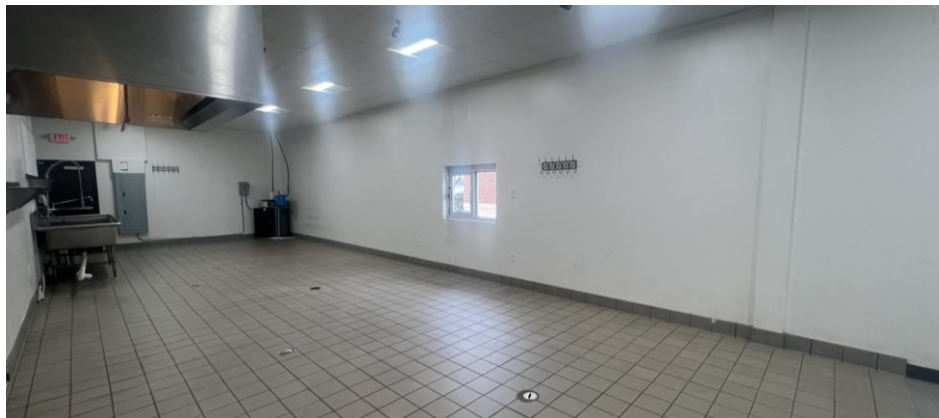
Wendy H Pierce, RPA
478-746-9421 Office
478-335-1254 Cell
wpierce@fickling.com

Tommy Ricks III
478-953-2244 Office
478-998-5030 Cell
tommyricks@fickling.com



577 Mulberry St, Suite 1100
Macon, GA 31201
478.746.9421 Office
<https://commercial.fickling.com>

SUITE 500



CONTACT

Wendy H Pierce, RPA
478-746-9421 Office
478-335-1254 Cell
wpierce@fickling.com

Tommy Ricks III
478-953-2244 Office
478-998-5030 Cell
tommyricks@fickling.com



577 Mulberry St, Suite 1100
Macon, GA 31201
478.746.9421 Office
<https://commercial.fickling.com>

Retail Suites For Lease | Mercer Landing

1530 Mercer University Drive
Macon, GA 31204



Summary

Area Info

Photos

Aerial

Site Map



CONTACT

Wendy H Pierce, RPA
478-746-9421 Office
478-335-1254 Cell
wpierce@fickling.com

Tommy Ricks III
478-953-2244 Office
478-998-5030 Cell
tommyricks@fickling.com



577 Mulberry St, Suite 1100
Macon, GA 31201
478.746.9421 Office
<https://commercial.fickling.com>

Retail Suites For Lease | Mercer Landing

1530 Mercer University Drive
Macon, GA 31204



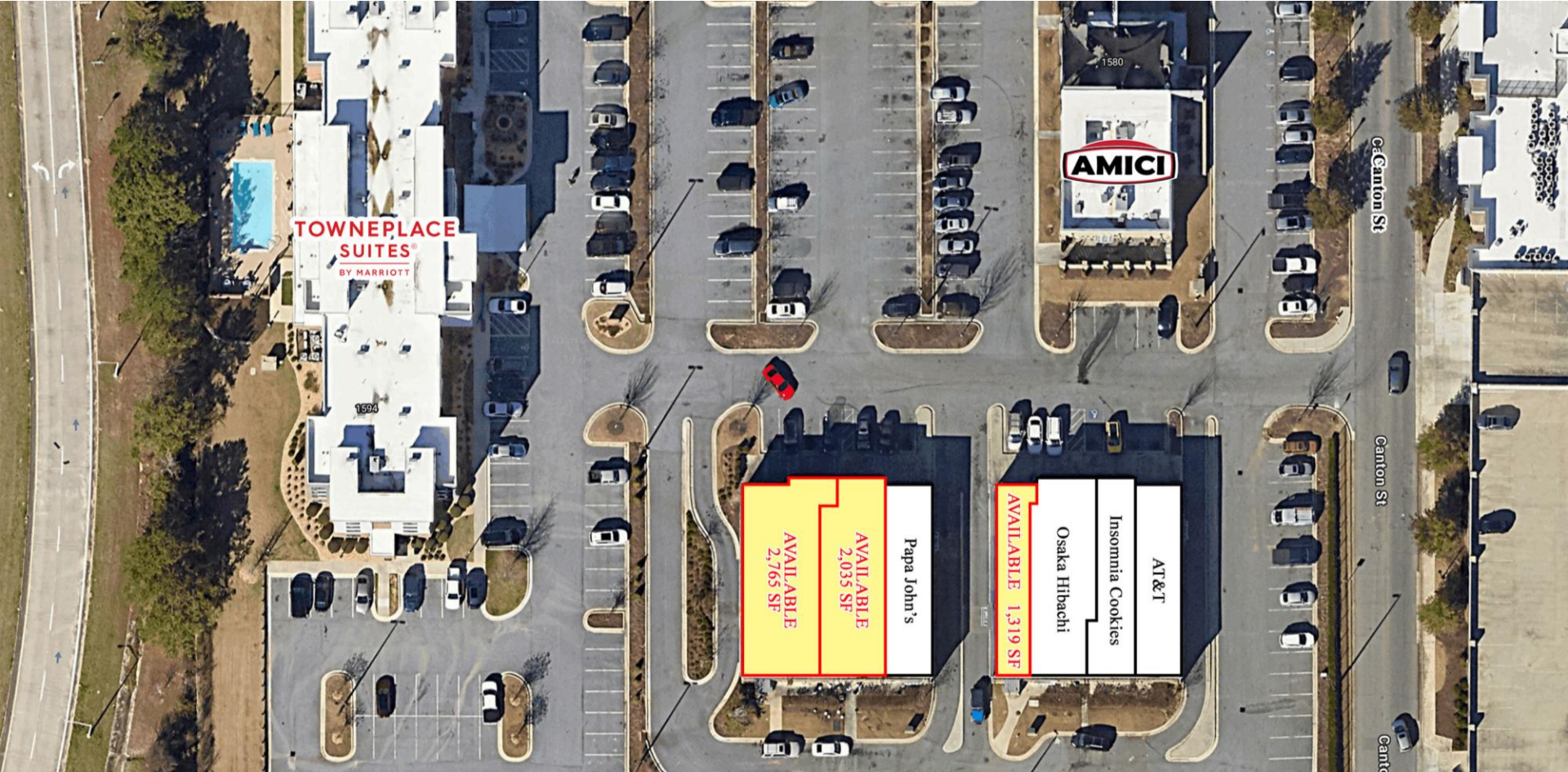
Summary

Area Info

Photos

Aerial

Site Map



CONTACT

Wendy H Pierce, RPA
478-746-9421 Office
478-335-1254 Cell
wpierce@fickling.com

Tommy Ricks III
478-953-2244 Office
478-998-5030 Cell
tommyricks@fickling.com



577 Mulberry St, Suite 1100
Macon, GA 31201
478.746.9421 Office
<https://commercial.fickling.com>