

Showroom/Service Center For Lease

118 Roberson Mill Road
Milledgeville, GA 31061



Summary

Area Info

Photos

Floor Plan

Aerial

Site Map



CONTACT

Jonathan Schuemann
478-746-9421 Office
561-676-4633 Cell
jonathan@fickling.com

Patty Burns, CCIM, ALC
478-746-9421 Office
478-951-5100 Cell
patty@fickling.com

Trip Wilhoit, CCIM, ALC
478-746-9421 Office
478-960-4080 Cell
trip@fickling.com



577 Mulberry St, Suite 1100
Macon, GA 31201
478.746.9421 Office
<https://commercial.fickling.com>

Showroom/Service Center For Lease

118 Roberson Mill Road
Milledgeville, GA 31061



Summary

Area Info

Photos

Floor Plan

Aerial

Site Map

PROPERTY INFORMATION

BUILDING

Property Address: 118 Roberson Mill Road
Milledgeville, GA 31061

Available: 8,660 SF
Showroom: 1,620 SF
Service: 4,080 SF

Year Built: 1982

Frontage: ±191'

Utilities: All available

Parking: Ample, paved

Traffic Count: Roberson Mill Road - 20,800 VPD
N Columbia Street - 37,700 VPD

SITE

Site Size: 1.09 Acres

Parcel ID: M52 003

County: Baldwin

Zoning: None - Located in the County

Demographics 2024	1 Mile	3 Miles	5 Miles
Population	2,563	15,586	27,975
Avg HH Income	\$109,854	\$90,351	\$94,325
Median Age	37.9	30.2	34.6

LEASE PRICE: \$5,000.00/Month

CONTACT

Jonathan Schuemann
478-746-9421 Office
561-676-4633 Cell
jonathan@fickling.com

Patty Burns, CCIM, ALC
478-746-9421 Office
478-951-5100 Cell
patty@fickling.com

Trip Wilhoit, CCIM, ALC
478-746-9421 Office
478-960-4080 Cell
trip@fickling.com



577 Mulberry St, Suite 1100
Macon, GA 31201
478.746.9421 Office
<https://commercial.fickling.com>

This information is from resources deemed to be reliable and is subject to change without notice. No warranties or guarantees for accuracy are made by Fickling and Company.

Showroom/Service Center For Lease

118 Roberson Mill Road
Milledgeville, GA 31061



Summary

Area Info

Photos

Floor Plan

Aerial

Site Map

AREA INFORMATION

SITE

This 8,660 SF building is a former auto service center and showroom. Showroom space is 1,620 SF, and the service center space is 4,080 SF. Ideal for use as a dealership for boats, golf carts, or similar. Property is situated on a 1.09 Acre lot, with ample paved parking, and 191'± frontage on Roberson Mill Road.

LOCATION

Located on Roberson Mill Road, less than ¼ mile from the intersection of Roberson Mill Road and North Columbia Street (Highway 441), Milledgeville's main retail and restaurant corridor. North Columbia Street provides easy access to Lake Sinclair.



CONTACT

Jonathan Schuemann
478-746-9421 Office
561-676-4633 Cell
jonathan@fickling.com

Patty Burns, CCIM, ALC
478-746-9421 Office
478-951-5100 Cell
patty@fickling.com

Trip Wilhoit, CCIM, ALC
478-746-9421 Office
478-960-4080 Cell
trip@fickling.com



577 Mulberry St, Suite 1100
Macon, GA 31201
478.746.9421 Office
<https://commercial.fickling.com>

Showroom/Service Center For Lease

118 Roberson Mill Road
Milledgeville, GA 31061



Summary

Area Info

Photos

Floor Plan

Aerial

Site Map



CONTACT

Jonathan Schuemann
478-746-9421 Office
561-676-4633 Cell
jonathan@fickling.com

Patty Burns, CCIM, ALC
478-746-9421 Office
478-951-5100 Cell
patty@fickling.com

Trip Wilhoit, CCIM, ALC
478-746-9421 Office
478-960-4080 Cell
trip@fickling.com



577 Mulberry St, Suite 1100
Macon, GA 31201
478.746.9421 Office
<https://commercial.fickling.com>

Showroom/Service Center For Lease

118 Roberson Mill Road
Milledgeville, GA 31061



Summary

Area Info

Photos

Floor Plan

Aerial

Site Map



CONTACT

Jonathan Schuemann
478-746-9421 Office
561-676-4633 Cell
jonathan@fickling.com

Patty Burns, CCIM, ALC
478-746-9421 Office
478-951-5100 Cell
patty@fickling.com

Trip Wilhoit, CCIM, ALC
478-746-9421 Office
478-960-4080 Cell
trip@fickling.com



577 Mulberry St, Suite 1100
Macon, GA 31201
478.746.9421 Office
<https://commercial.fickling.com>

Showroom/Service Center For Lease

118 Roberson Mill Road
Milledgeville, GA 31061



Summary

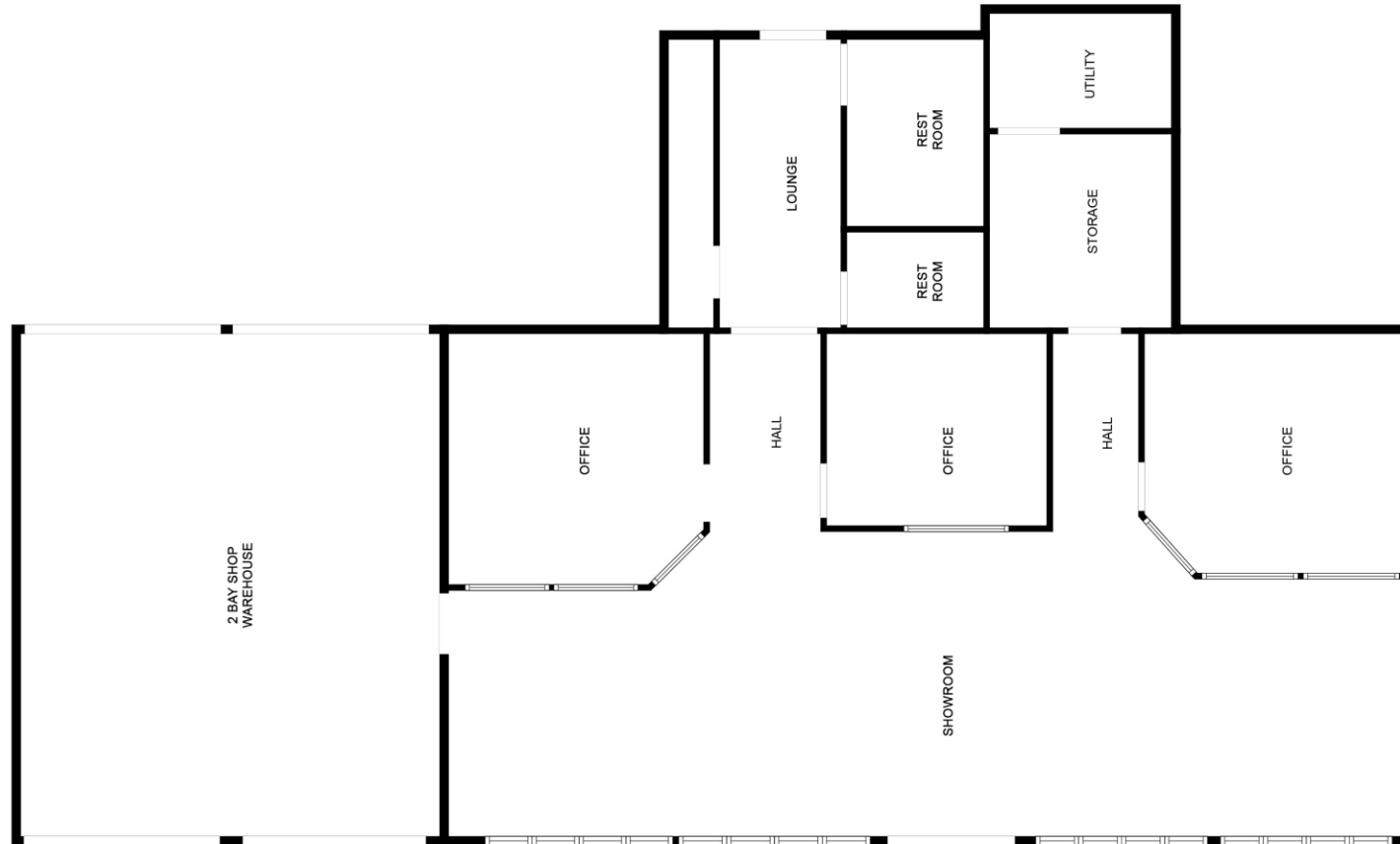
Area Info

Photos

Floor Plan

Aerial

Site Map



*All measurements and all calculations of area are approximate and not guaranteed

CONTACT

Jonathan Schuemann
478-746-9421 Office
561-676-4633 Cell
jonathan@fickling.com

Patty Burns, CCIM, ALC
478-746-9421 Office
478-951-5100 Cell
patty@fickling.com

Trip Wilhoit, CCIM, ALC
478-746-9421 Office
478-960-4080 Cell
trip@fickling.com



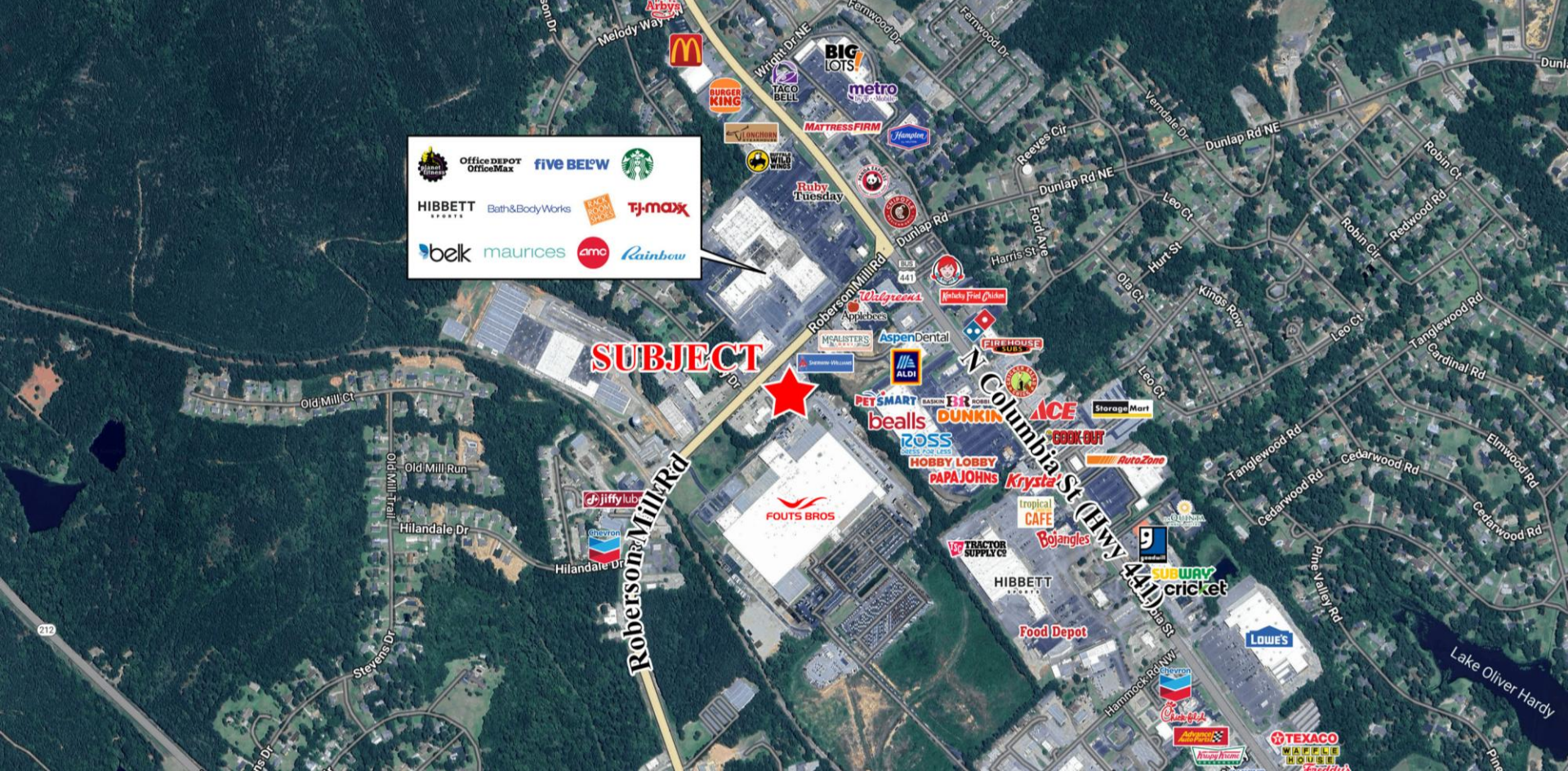
577 Mulberry St, Suite 1100
Macon, GA 31201
478.746.9421 Office
<https://commercial.fickling.com>

Showroom/Service Center For Lease

118 Roberson Mill Road
Milledgeville, GA 31061



- Summary
- Area Info
- Photos
- Floor Plan
- Aerial
- Site Map



CONTACT

Jonathan Schuemann
478-746-9421 Office
561-676-4633 Cell
jonathan@fickling.com

Patty Burns, CCIM, ALC
478-746-9421 Office
478-951-5100 Cell
patty@fickling.com

Trip Wilhoit, CCIM, ALC
478-746-9421 Office
478-960-4080 Cell
trip@fickling.com



577 Mulberry St, Suite 1100
Macon, GA 31201
478.746.9421 Office
<https://commercial.fickling.com>

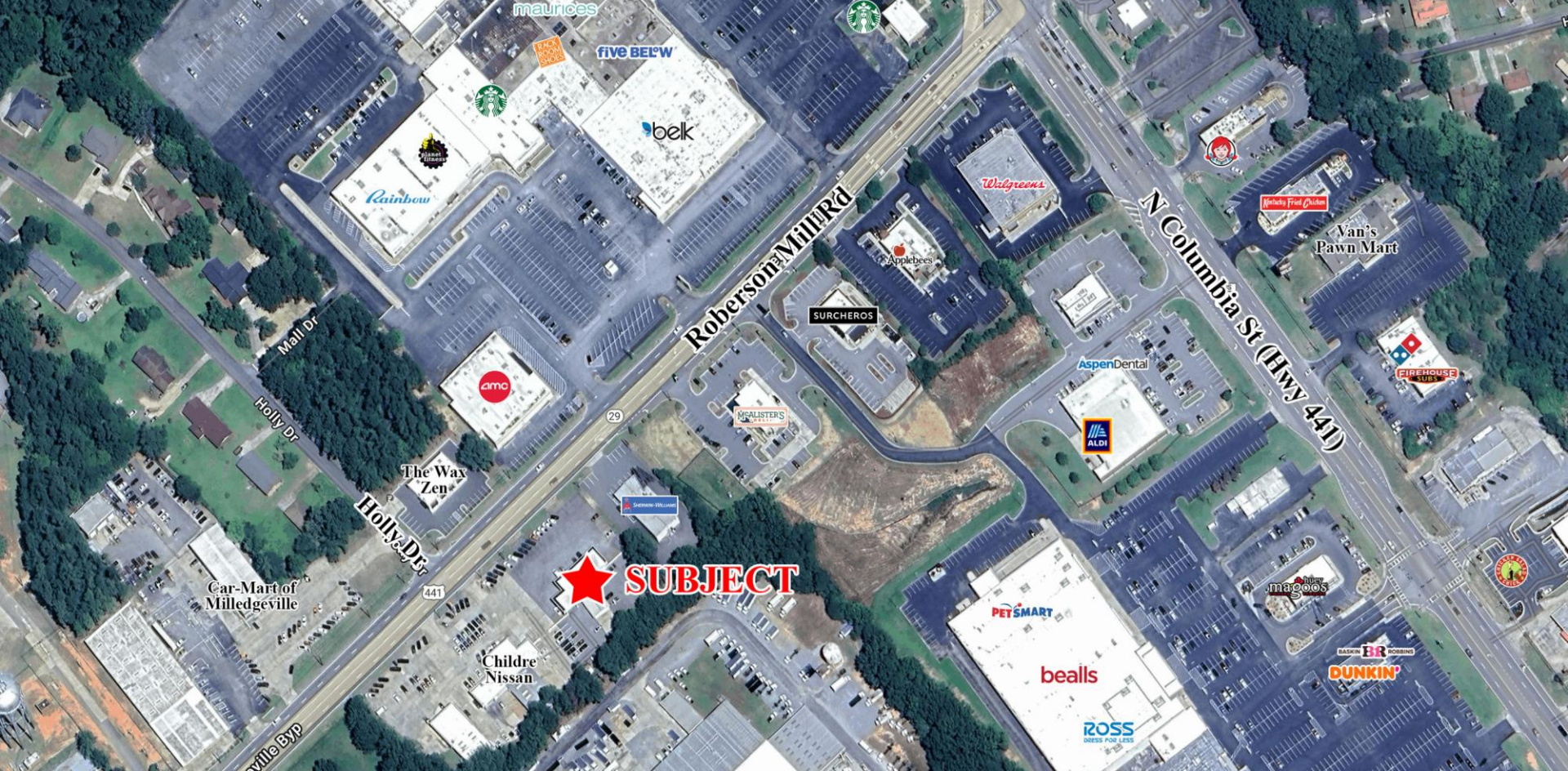
This information is from resources deemed to be reliable and is subject to change without notice. No warranties or guarantees for accuracy are made by Fickling and Company.

Showroom/Service Center For Lease

118 Roberson Mill Road
Milledgeville, GA 31061



- Summary
- Area Info
- Photos
- Floor Plan
- Aerial
- Site Map



CONTACT

Jonathan Schuemann
478-746-9421 Office
561-676-4633 Cell
jonathan@fickling.com

Patty Burns, CCIM, ALC
478-746-9421 Office
478-951-5100 Cell
patty@fickling.com

Trip Wilhoit, CCIM, ALC
478-746-9421 Office
478-960-4080 Cell
trip@fickling.com



577 Mulberry St, Suite 1100
Macon, GA 31201
478.746.9421 Office
<https://commercial.fickling.com>

This information is from resources deemed to be reliable and is subject to change without notice. No warranties or guarantees for accuracy are made by Fickling and Company.