

# Commercial/Residential Mixed Use Property FOR SALE

404 South Mock Road  
Albany, GA 31705



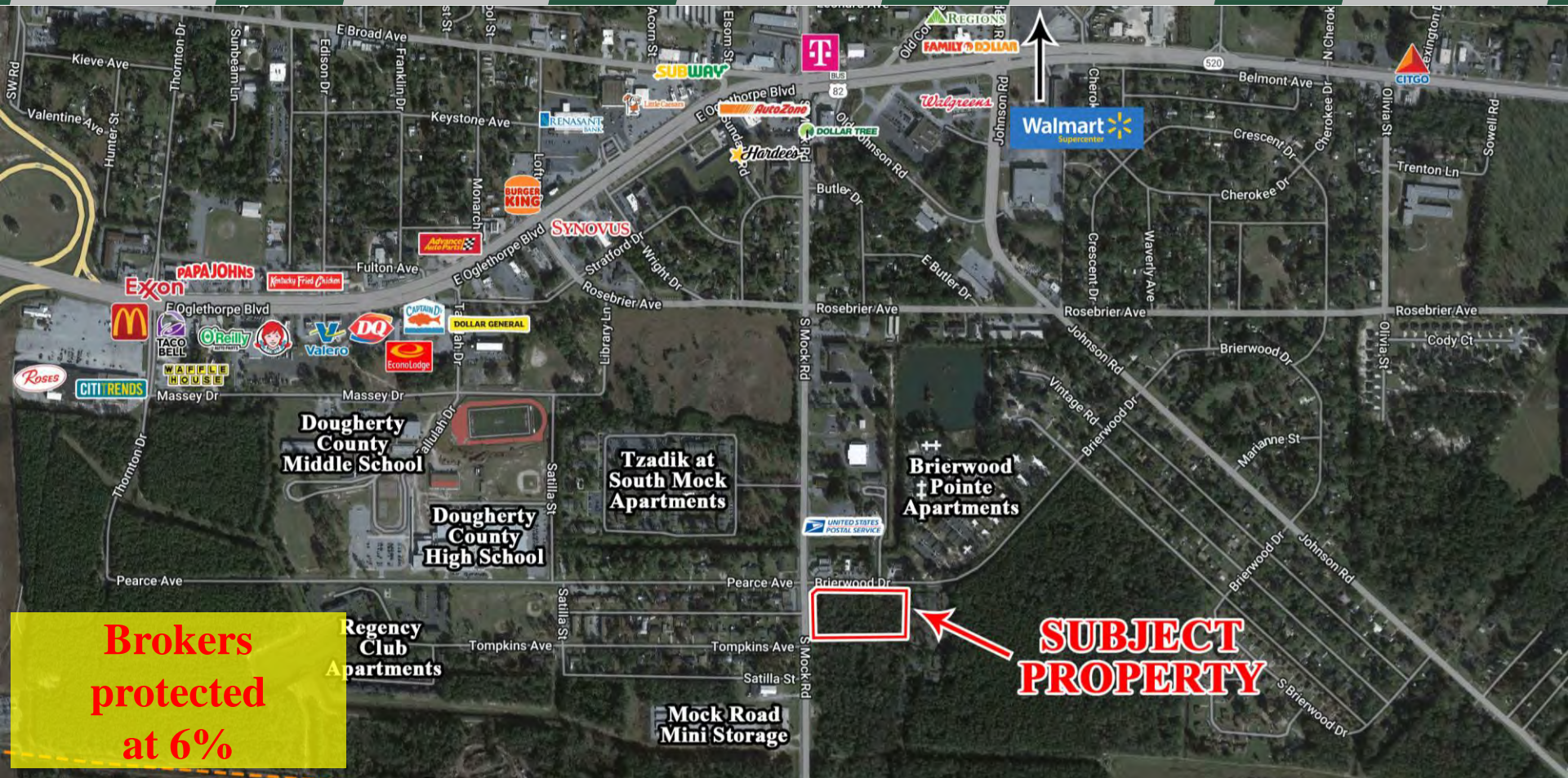
Summary

Area Info

Topo Map

Aerial

Site Map



**Brokers  
protected  
at 6%**

**SUBJECT  
PROPERTY**

## CONTACT

**Lan Heath**  
478-746-9421 Office  
478-731-5899 Cell  
lheath@fickling.com

**Joseph Bowen**  
478-746-9421 Office  
478-538-6026 Cell  
jbowen@fickling.com



577 Mulberry St, Suite 1100  
Macon, GA 31201  
478.746.9421 Office  
<https://commercial.fickling.com>

Commercial/Residential Mixed Use Property FOR SALE  
404 South Mock Road  
Albany, GA 31705



Summary

Area Info

Topo Map

Aerial

Site Map

PROPERTY INFORMATION

BUILDING	
Property Address:	404 South Mock Road Albany, GA 31705
County:	Dougherty
Topography:	Level & Lightly Wooded
Frontage:	278'±
Taxes:	\$1,400.71 (2024 Est.)

REDUCED: \$59,000.00  
~~SALE PRICE: \$99,000.00~~

SITE	
Site Size:	3.97 Acres
Parcel ID:	000RR/00011/08B
Zoning:	C-7 (Commercial/Residential Mixed Use)

Demographics 2025	3 Mile	5 Miles	10 Miles
Population	17,936	38,727	100,506
Avg HH Income	\$45,058	\$51,313	\$73,132
Median Age	32.8	34.5	36.7

CONTACT

Lan Heath  
478-746-9421 Office  
478-731-5899 Cell  
lheath@fickling.com

Joseph Bowen  
478-746-9421 Office  
478-538-6026 Cell  
jbowen@fickling.com



577 Mulberry St, Suite 1100  
Macon, GA 31201  
478.746.9421 Office  
<https://commercial.fickling.com>



PROPERTY INFORMATION

LOCATION

At the southeast corner of the signalized intersection of South Mock Road and Briarwood Drive. Conveniently situated, this location offers quick access to both Highway 82 and Highway 19. Within the area you'll find prominent neighbors such as Wal-Mart Supercenter, Walgreens, Roses, USPS, Mock Road Mini Storage, and a variety of restaurants and other retail options.



NOTES

This prime lot is located directly at the hard corner/signalized intersection of South Mock Road and Briarwood Drive, with outstanding visibility and access. Zoned C-7 for flexible commercial/ residential mixed use. Parcel may be purchased with one or both lots adjoining on South Mock Road, offering the opportunity for long highway frontage and over 10 acres of development land. Broker is protected at 6%.

CONTACT

**Lan Heath**  
478-746-9421 Office  
478-731-5899 Cell  
lheath@fickling.com

**Joseph Bowen**  
478-746-9421 Office  
478-538-6026 Cell  
jbowen@fickling.com



577 Mulberry St, Suite 1100  
Macon, GA 31201  
478.746.9421 Office  
<https://commercial.fickling.com>

# Commercial/Residential Mixed Use Property FOR SALE

404 South Mock Road  
Albany, GA 31705



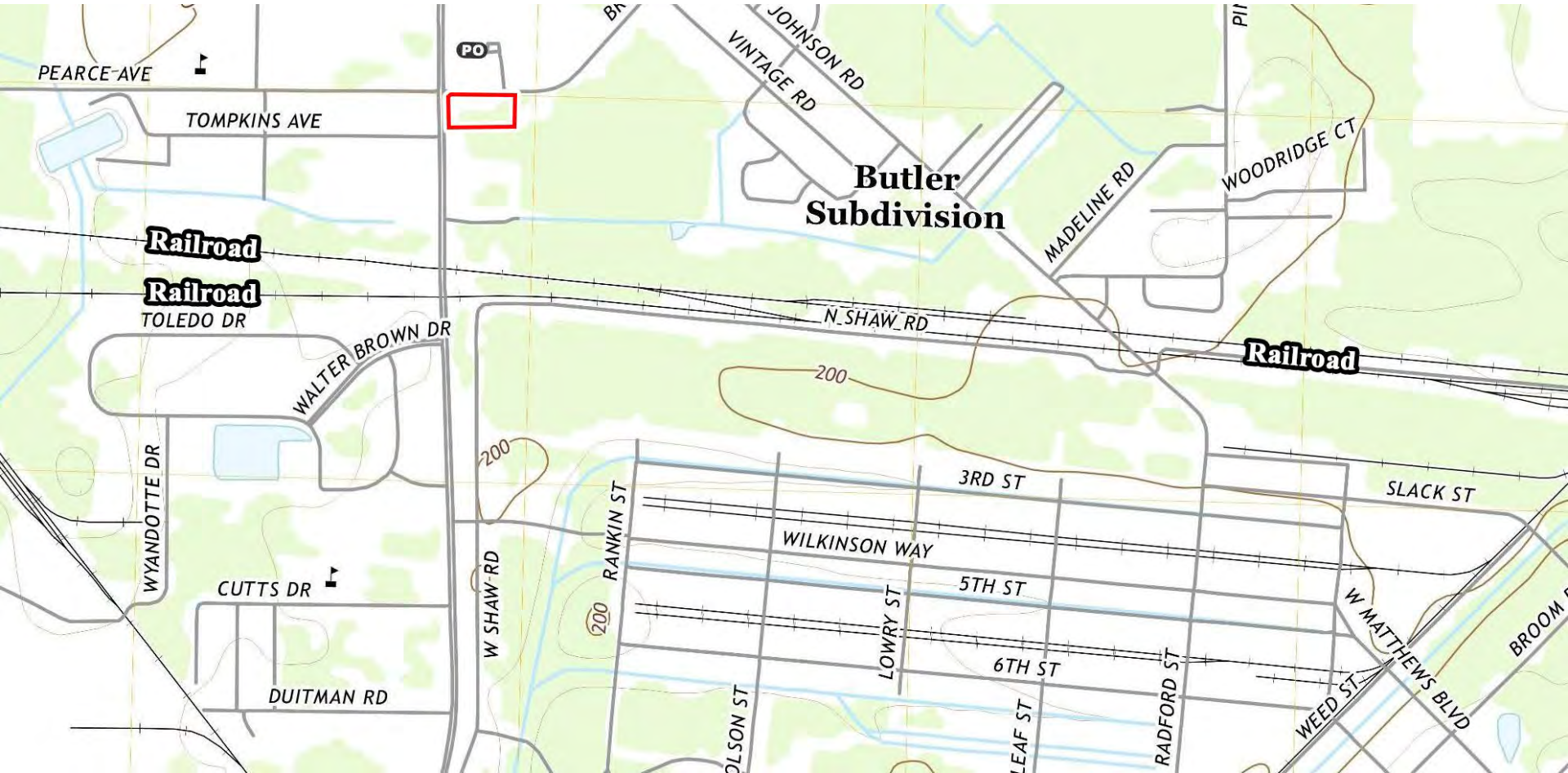
Summary

Area Info

Topo Map

Aerial

Site Map



## CONTACT

**Lan Heath**  
478-746-9421 Office  
478-731-5899 Cell  
lheath@fickling.com

**Joseph Bowen**  
478-746-9421 Office  
478-538-6026 Cell  
jbowen@fickling.com



577 Mulberry St, Suite 1100  
Macon, GA 31201  
478.746.9421 Office  
<https://commercial.fickling.com>



# Commercial/Residential Mixed Use Property FOR SALE

404 South Mock Road  
Albany, GA 31705



Summary

Area Info

Topo Map

Aerial

Site Map



## CONTACT

**Lan Heath**

478-746-9421 Office  
478-731-5899 Cell  
lheath@fickling.com

**Joseph Bowen**

478-746-9421 Office  
478-538-6026 Cell  
jbowen@fickling.com



577 Mulberry St, Suite 1100  
Macon, GA 31201  
478.746.9421 Office  
<https://commercial.fickling.com>



# Commercial/Residential Mixed Use Property FOR SALE

## 404 South Mock Road Albany, GA 31705



Summary

Area Info

Topo Map

Aerial

Site Map



### CONTACT

**Lan Heath**  
478-746-9421 Office  
478-731-5899 Cell  
lheath@fickling.com

**Joseph Bowen**  
478-746-9421 Office  
478-538-6026 Cell  
jbowen@fickling.com



577 Mulberry St, Suite 1100  
Macon, GA 31201  
478.746.9421 Office  
<https://commercial.fickling.com>