

Street Level Corner Suites For Lease

401 Cherry Street
Macon, GA 31201



Summary

Area Info

Photos

Aerial

Site Map



CONTACT

Wendy H Pierce, RPA
478-746-9421 Office
478-335-1254 Cell
wpierce@fickling.com

Tommy Ricks III
478-953-2244 Office
478-998-5030 Cell
tommyricks@fickling.com



577 Mulberry St, Suite 1100
Macon, GA 31201
478.746.9421 Office
<https://commercial.fickling.com>

Street Level Corner Suites For Lease

401 Cherry Street
Macon, GA 31201



Summary

Area Info

Photos

Aerial

Site Map

PROPERTY INFORMATION

BUILDING

Property Address: 401 Cherry Street
Macon, GA 31201

County: Bibb

Total Size: 40,530 SF

Available: Suite 100 - 3,200 SF
Suite 101 - 1,700 SF

Parking: Ample, Street and Deck nearby

Traffic Count: I-75 - 83,300 VPD
I-16 - 52,100 VPD
M.L.K. Jr. Blvd - 17,200 VPD

SITE

Parcel ID: R073-0280

Zoning: CBD-1

Year Built: 1923

Demographics 2025	1 Mile	3 Miles	5 Miles	7 Miles
Population	5,038	36,970	80,468	114,945
Avg HH Income	\$69,984	\$53,737	\$62,747	\$70,236
Median Age	34.4	34.6	35.0	34.9

LEASE PRICE:

Suite 100: \$17.50/SF MG (Plus Garbage) | Suite 101: Contact Agent

CONTACT

Wendy H Pierce, RPA
478-746-9421 Office
478-335-1254 Cell
wpierce@fickling.com

Tommy Ricks III
478-953-2244 Office
478-998-5030 Cell
tommyricks@fickling.com



577 Mulberry St, Suite 1100
Macon, GA 31201
478.746.9421 Office
<https://commercial.fickling.com>

Street Level Corner Suites For Lease

401 Cherry Street
Macon, GA 31201



Summary

Area Info

Photos

Aerial

Site Map

AREA INFORMATION

NOTES

Downtown Macon hosts 1,200+ annual events and festivals, positioning this property in the heart of one of Georgia's most active cultural districts.

Suite 100:

- 3,200 SF of functional space
- Second-generation restaurant with outdoor patio and grease trap
- Suite contains Dining, Bar, and Lounge areas, plus a full Kitchen.
- Private Lounge is separated from Dining and Bar areas.

Suite 101:

- 1,700 SF of flexible space
- Combined Dining/Lounge area, Bar, and Kitchen.
- Also includes a small stage area, ideal for live entertainment or special events.

LOCATION

Direct access via Riverside Drive and Martin Luther King Jr Boulevard. Less than 1 mile from Interstate 75. Position your business in the heart of Macon's thriving downtown district. This location offers unmatched visibility and walkability, surrounded by cultural landmarks, entertainment venues, and essential services. Located just steps from the Georgia Sports Hall of Fame (the nation's largest sports museum) and the Tubman Museum (the Southeast's largest African American art and history museum). Atrium Health Navicent and Piedmont Macon Medical Center are also nearby, providing strong healthcare infrastructure and daytime traffic. This location is ideal for retail, dining, or professional services seeking high foot traffic and proximity to Macon's most iconic destinations.

Nearby businesses in the area include the Georgia Sports Hall of Fame, Theatre Macon, the Tubman Museum, Terminal Station, Greater Macon Chamber of Commerce, NewTown Macon, City Hall, and the Macon-Bibb County Courthouse .

CONTACT

Wendy H Pierce, RPA
478-746-9421 Office
478-335-1254 Cell
wpierce@fickling.com

Tommy Ricks III
478-953-2244 Office
478-998-5030 Cell
tommyricks@fickling.com



577 Mulberry St, Suite 1100
Macon, GA 31201
478.746.9421 Office
<https://commercial.fickling.com>

Street Level Corner Suites For Lease

401 Cherry Street
Macon, GA 31201



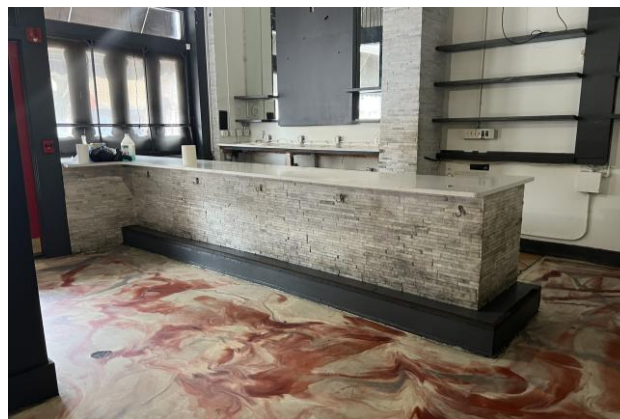
Summary

Area Info

Photos

Aerial

Site Map



CONTACT

Wendy H Pierce, RPA
478-746-9421 Office
478-335-1254 Cell
wpierce@fickling.com

Tommy Ricks III
478-953-2244 Office
478-998-5030 Cell
tommyricks@fickling.com



577 Mulberry St, Suite 1100
Macon, GA 31201
478.746.9421 Office
<https://commercial.fickling.com>

Street Level Corner Suites For Lease

401 Cherry Street
Macon, GA 31201



Summary

Area Info

Photos

Aerial

Site Map



CONTACT

Wendy H Pierce, RPA
478-746-9421 Office
478-335-1254 Cell
wpierce@fickling.com

Tommy Ricks III
478-953-2244 Office
478-998-5030 Cell
tommyricks@fickling.com



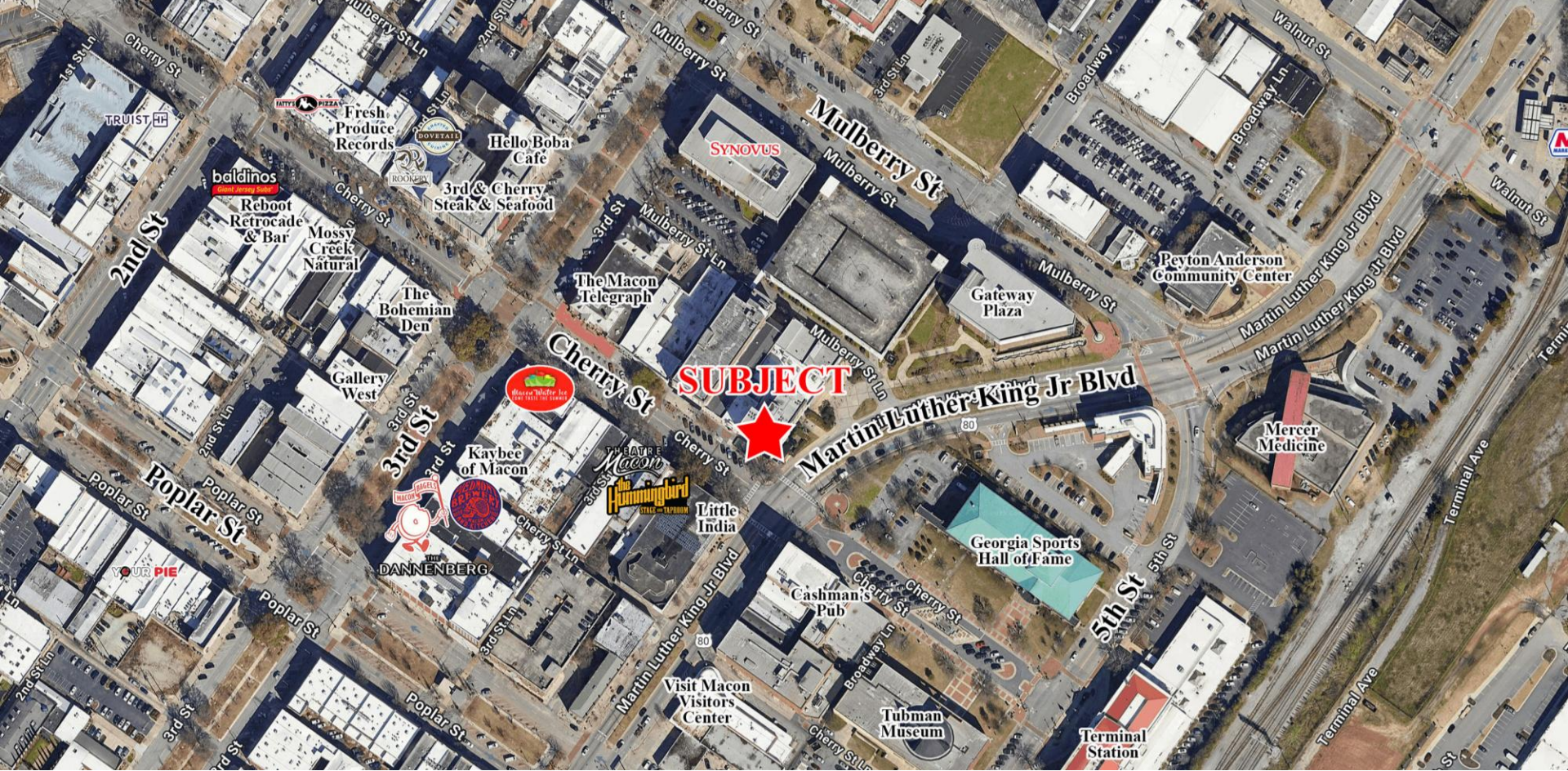
577 Mulberry St, Suite 1100
Macon, GA 31201
478.746.9421 Office
<https://commercial.fickling.com>

Street Level Corner Suites For Lease

401 Cherry Street
Macon, GA 31201



- Summary
- Area Info
- Photos
- Aerial
- Site Map



CONTACT

Wendy H Pierce, RPA
478-746-9421 Office
478-335-1254 Cell
wpierce@fickling.com

Tommy Ricks III
478-953-2244 Office
478-998-5030 Cell
tommyricks@fickling.com



577 Mulberry St, Suite 1100
Macon, GA 31201
478.746.9421 Office
<https://commercial.fickling.com>

This information is from resources deemed to be reliable and is subject to change without notice. No warranties or guarantees for accuracy are made by Fickling and Company.