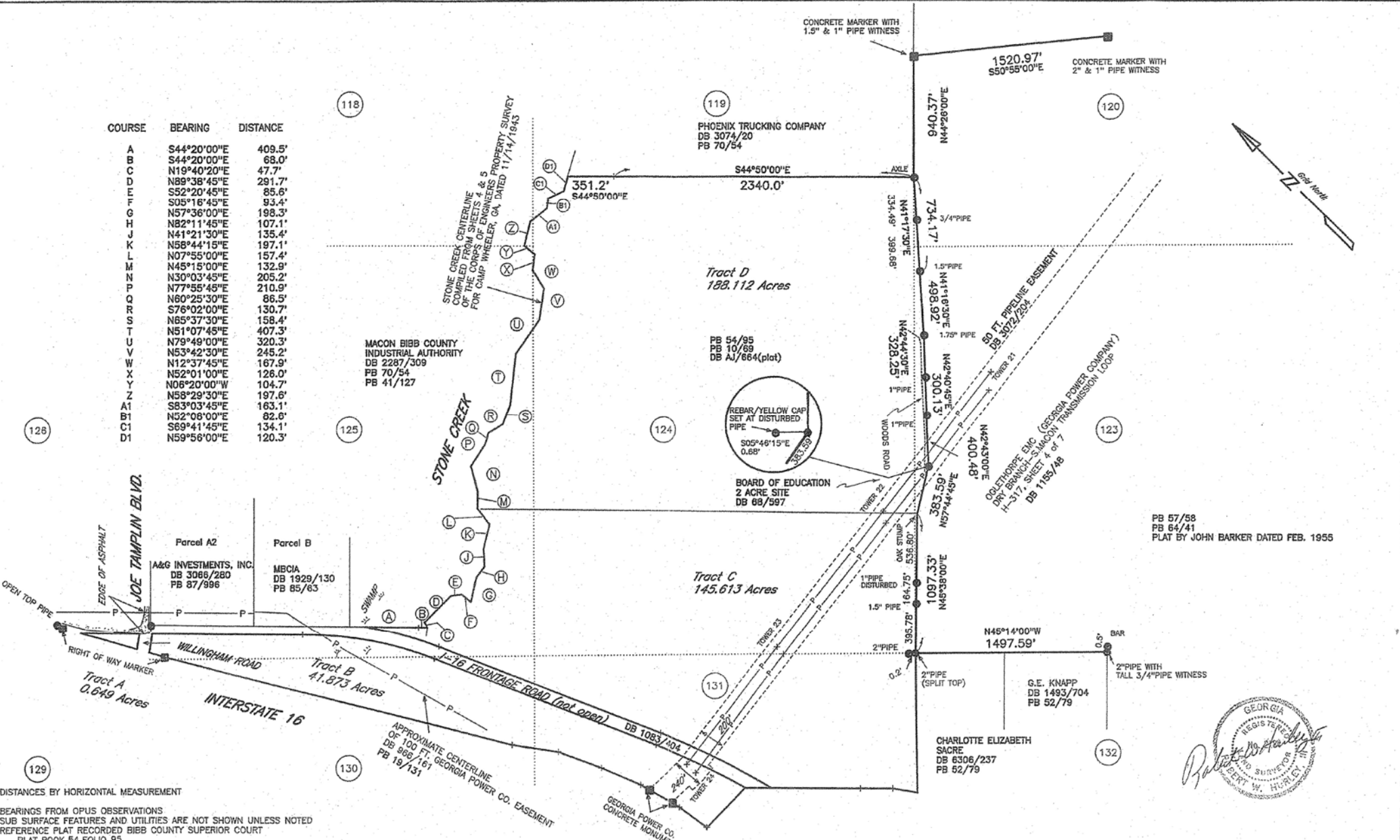


COURSE	BEARING	DISTANCE
A	S44°20'00"E	409.5'
B	S44°20'00"E	68.0'
C	N19°40'20"E	47.7'
D	N89°38'45"E	291.7'
E	S52°20'45"E	85.6'
F	S05°16'45"E	93.4'
G	N57°36'00"E	198.3'
H	N82°11'45"E	107.1'
J	N41°21'30"E	135.4'
K	N58°44'15"E	197.1'
L	N07°55'00"E	157.4'
M	N45°15'00"E	132.9'
N	N30°03'45"E	205.2'
P	N77°55'45"E	210.9'
Q	N60°25'30"E	86.5'
R	S76°02'00"E	130.7'
S	N65°37'30"E	158.4'
T	N51°07'45"E	407.3'
U	N79°49'00"E	320.3'
V	N53°42'30"E	245.2'
W	N12°37'45"E	167.9'
X	N52°01'00"E	126.0'
Y	N06°20'00"W	104.7'
Z	N58°29'30"E	197.6'
A1	S83°03'45"E	163.1'
B1	N52°08'00"E	82.6'
C1	S69°41'45"E	134.1'
D1	N59°56'00"E	120.3'



PB 57/58
PB 64/41
PLAT BY JOHN BARKER DATED FEB. 1955



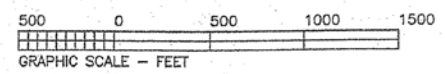
Sheet 1 of 2

COMPILED PLAT	
LAND LOTS 118, 119, 120, 123, 124, 125, 126, 129, 130, & 131 SEVENTH LAND DISTRICT BIBB COUNTY GEORGIA Scale 1"=500' September 8, 2008	
Robert W. Hurley, III GEORGIA REGISTERED LAND SURVEYOR NO. 2184 P.O. Box 26701, Macon, Georgia 478-745-4395	

DISTANCES BY HORIZONTAL MEASUREMENT
BEARINGS FROM OPUS OBSERVATIONS
SUB SURFACE FEATURES AND UTILITIES ARE NOT SHOWN UNLESS NOTED
REFERENCE PLAT RECORDED BIBB COUNTY SUPERIOR COURT
PLAT BOOK 54 FOLIO 95
THIS IS A COMPILED PLAT. DIMENSIONS SHOWN ARE BASED ON
REFERENCE PLATS WITH LIMITED FIELD WORK TO VERIFY THESE MEASUREMENTS
ACREAGE SHOWN IS TAKEN FROM PLAT BOOK 54/95

PLAT PREPARED SEPTEMBER 25, 2008
COPYRIGHT 2008 ROBERT W. HURLEY, III
THIS SURVEY IS PREPARED FOR THE USE OF THE PERSON NAMED IN
THE TITLE BLOCK. USE OF THIS PLAT BY OTHERS IS NOT
AUTHORIZED AND IS AT THEIR OWN RISK.
ALL EASEMENTS OF RECORD MAY NOT BE SHOWN
TAX MAP NO. V 10

- LEGEND
- IRON PIN FOUND (REBAR UNLESS NOTED)
 - X- FENCE
 - DB DEED BOOK
 - PB PLAT BOOK



(0850055A,PLT)