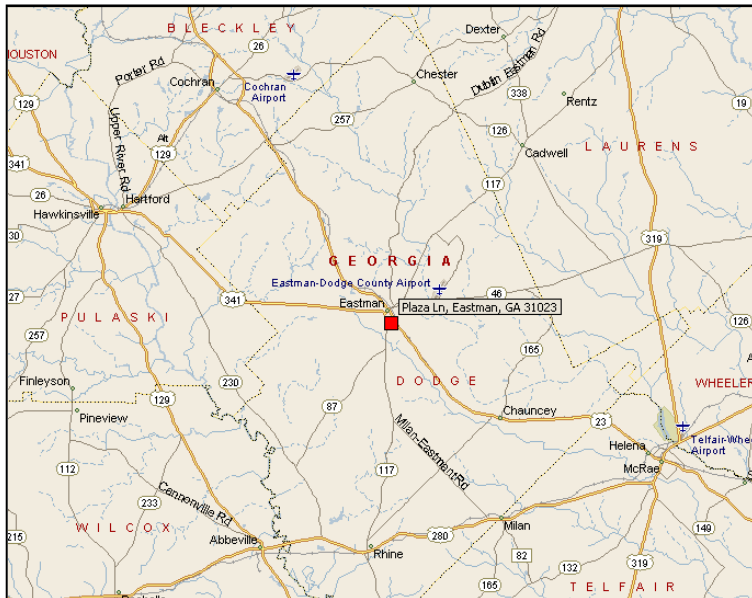


*Space Available
New Office Building
1103 Plaza Ave. Eastman, Georgia*



- 3,480 & 5,160 sf available. Will divide
- Ample Parking
- Located in Plaza Ave Office Park
- Conveniently located ¼ mile from new Super Walmart and ¼ mile from Eastman Regional Hospital



\$13.00 psf NNN

**Contact
TOM HICKS
478-746-9421
800-598-0590
thicks@fickling.com**

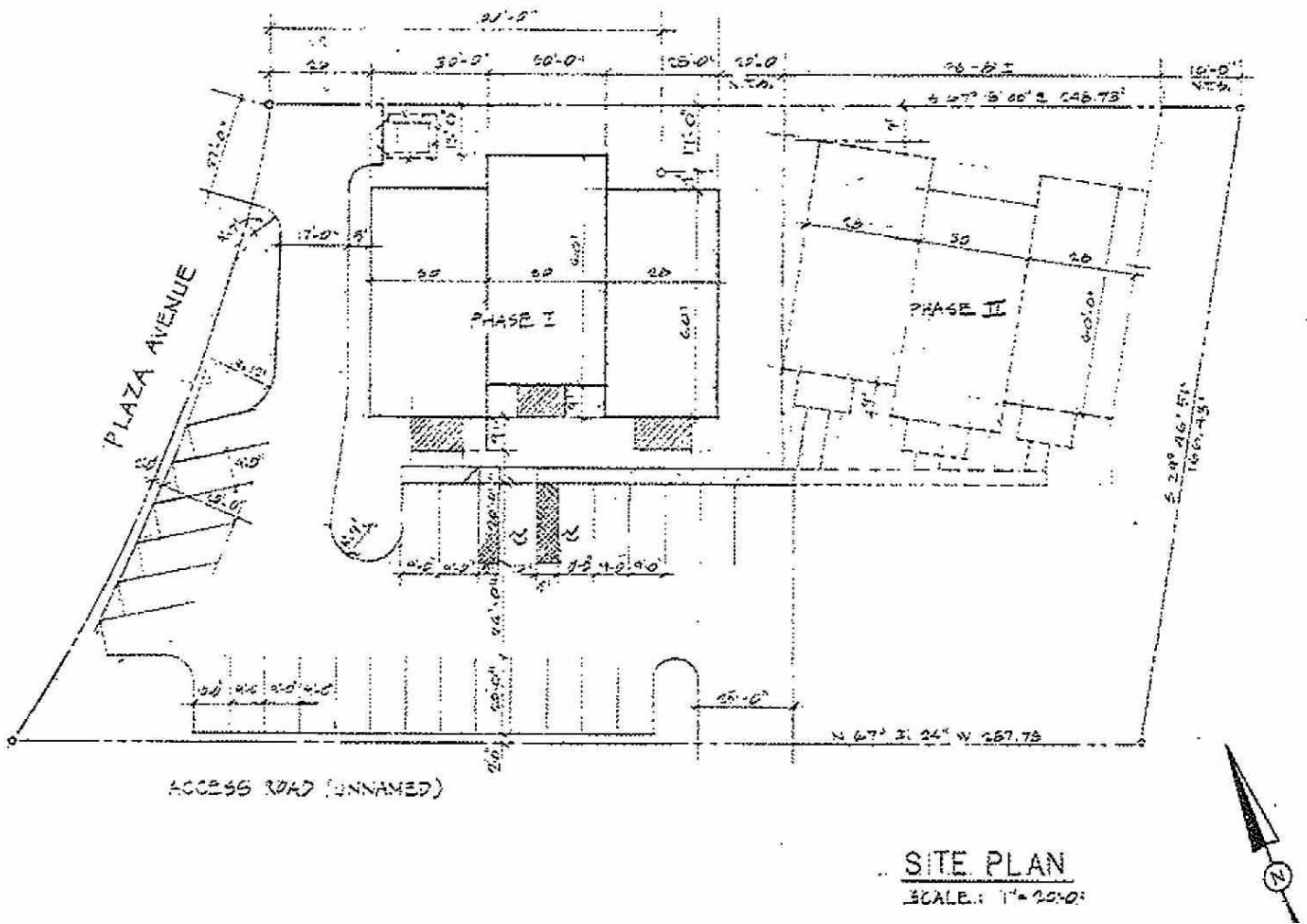
**Commercial Division
577 Mulberry Street
P.O. Box 310
Macon, GA 31202
(478) 746-9421
(478) 742-2015 FAX**



A Full Service Real Estate Company

www.fickling.com

1103 Plaza Ave. Eastman, Georgia



Contact: Tom Hicks 478-746-9426 or 800-598-0590