

SunTrust Professional Building
Sub-lease Space Available
435 Second Street | Macon | GA | 31201



- Convenient location in downtown Macon at the corner of Cherry & Second Street. Easy access to I-75 & I-475. Within walking distance to many restaurants, retail, and the federal and county courthouses.
- Complimentary conference room located on the second floor.
- Attached parking garage—two complimentary parking spaces per 1,000 sf.

- Built in 1955 and expanded in 1973.
- 5-story multi-tenant building with 143,486 gross square feet.
- 3,446 rsf & 3,569 rsf sub-lease space available
- Other tenants include SunTrust Bank, Jones, Cork & Miller, IRS, University of Phoenix, Homeland Security, and a mixture of local businesses.

Lease Rate:

\$13.50/sf

Full Service

**FOR MORE
INFORMATION
CONTACT**

Trip Wilhoit, CCIM, ALC
478-746-9421 (O)
478-960-4080 (C)
trip@fickling.com

Patty Burns, CCIM, ALC
478-746-9421 (O)
478-951-5100 (C)
patty@fickling.com

georgiacommercialrealestate.net | commercial.fickling.com

577 Mulberry St, Suite 1100 * P.O. Box 310 * Macon, GA 31202 | Phone (478) 746-9421 | Fax (478) 742-2015

This information is from resources deemed to be reliable, no warranties or guarantees for accuracy are made by Fickling and Company

SunTrust Professional Building

Sub-lease Space Available

435 Second Street | Macon | GA | 31201



**FOR MORE
INFORMATION
CONTACT**

Trip Wilhoit, CCIM, ALC
478-746-9421 (O)
478-960-4080 (C)
trip@fickling.com

Patty Burns, CCIM, ALC
478-746-9421 (O)
478-951-5100 (C)
patty@fickling.com

georgiacommercialrealestate.net | commercial.fickling.com

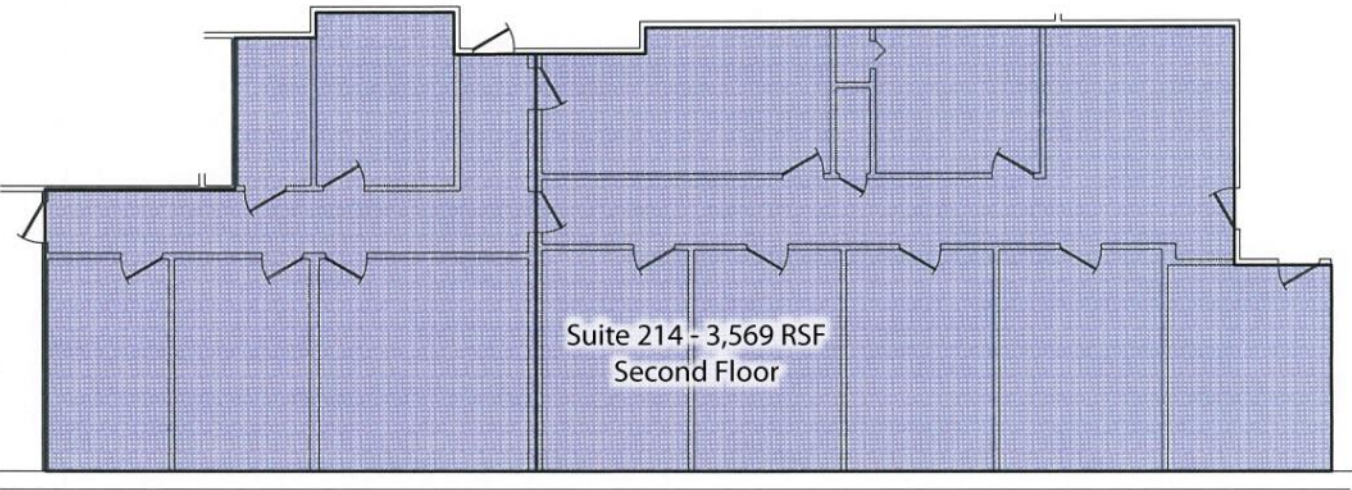
577 Mulberry St, Suite 1100 * P.O. Box 310 * Macon, GA 31202 | Phone (478) 746-9421 | Fax (478) 742-2015

This information is from resources deemed to be reliable, no warranties or guarantees for accuracy are made by Fickling and Company

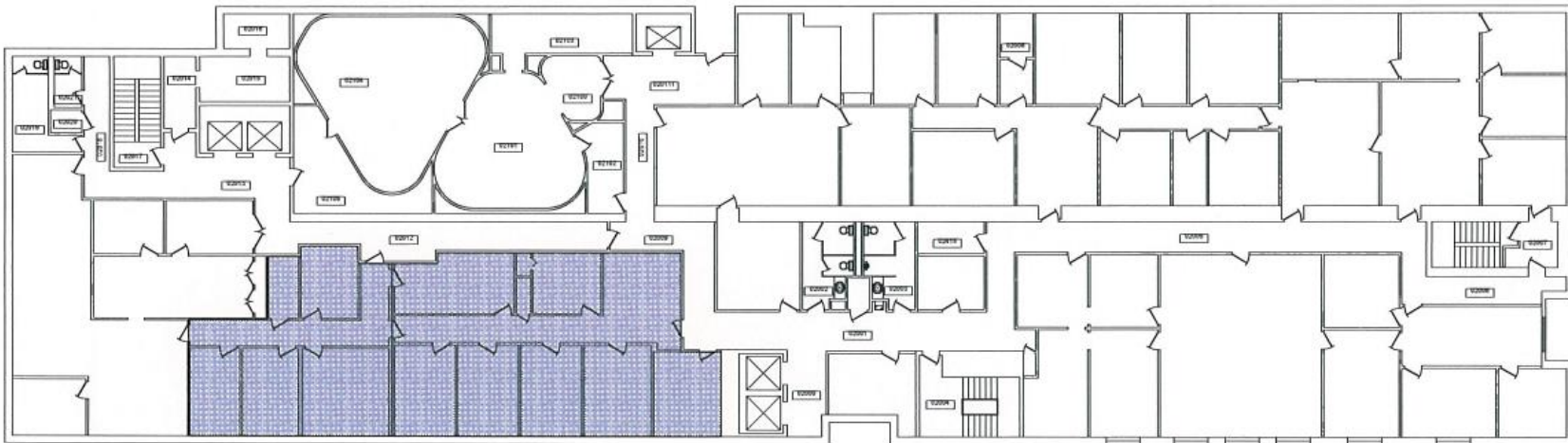
SunTrust Professional Building

Sub-lease Space Available

435 Second Street | Macon | GA | 31201



Suite 214 - 3,569 RSF
Second Floor

The image shows a detailed floor plan of Suite 214 on the second floor. The suite is a large, irregularly shaped space with several rooms and corridors. The entire suite area is highlighted with a blue hatched pattern. The text "Suite 214 - 3,569 RSF" and "Second Floor" is centered within the suite area.

**FOR MORE
INFORMATION
CONTACT**

Trip Wilhoit, CCIM, ALC
478-746-9421 (O)
478-960-4080 (C)
trip@fickling.com

Patty Burns, CCIM, ALC
478-746-9421 (O)
478-951-5100 (C)
patty@fickling.com

georgiacommercialrealestate.net | commercial.fickling.com

577 Mulberry St, Suite 1100 * P.O. Box 310 * Macon, GA 31202 | Phone (478) 746-9421 | Fax (478) 742-2015

This information is from resources deemed to be reliable, no warranties or guarantees for accuracy are made by Fickling and Company