

FOR SALE - 1.99 ACRES
Hwy 155 at East Lake Pkwy
McDonough, GA

FICKLING & COMPANY
A Full Service Real Estate Company
commercial.fickling.com



LOT SIZE: 1.99 acres—Tract 1

FRONTAGE: 170' feet on Hwy 155

UTILITIES: All available

ZONING: C-2

TRAFFIC: 10,500 Vehicles per Day

NEIGHBORS: Aylo Health (adjacent to property), Rite Aid at Hwy 155/East Lake Pkwy intersection, & McDonald's

NOTES: Property is adjacent to Aylo Health on Hwy 155. The 1.99 acres will have a shared access to existing detention pond behind Aylo Health. Call agent for details. Access off Hwy 155 to the 1.99 acres will have a shared curb cut with Aylo Health .

*See attached proposed plat and a former conceptual site plan

Sale Price: \$650,000

FOR MORE
INFORMATION
CONTACT

Trip Wilhoit, CCIM, ALC
478-746-9421
twilhoit@fickling.com

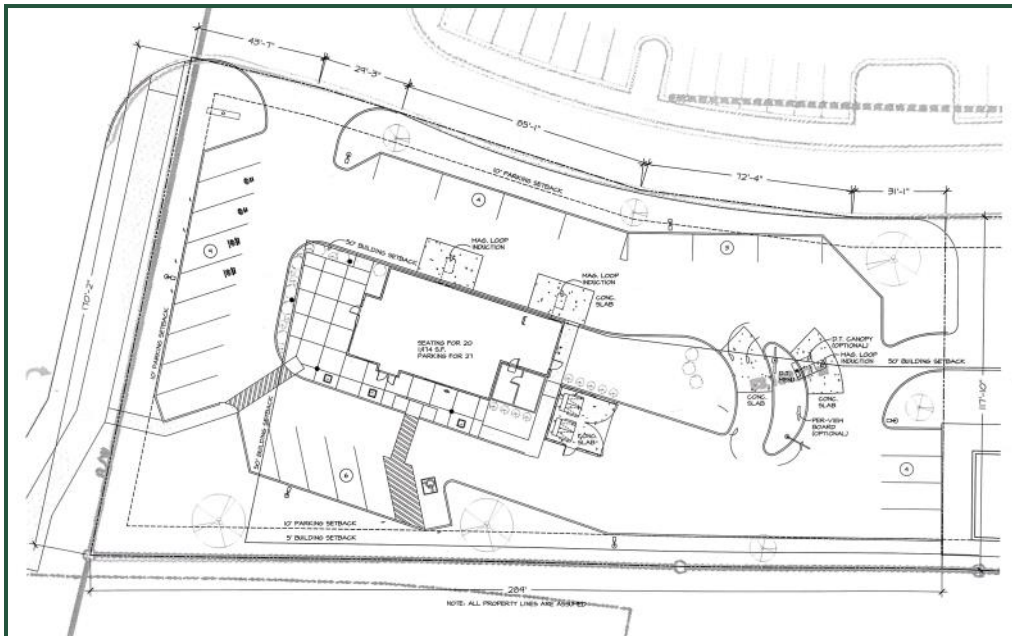
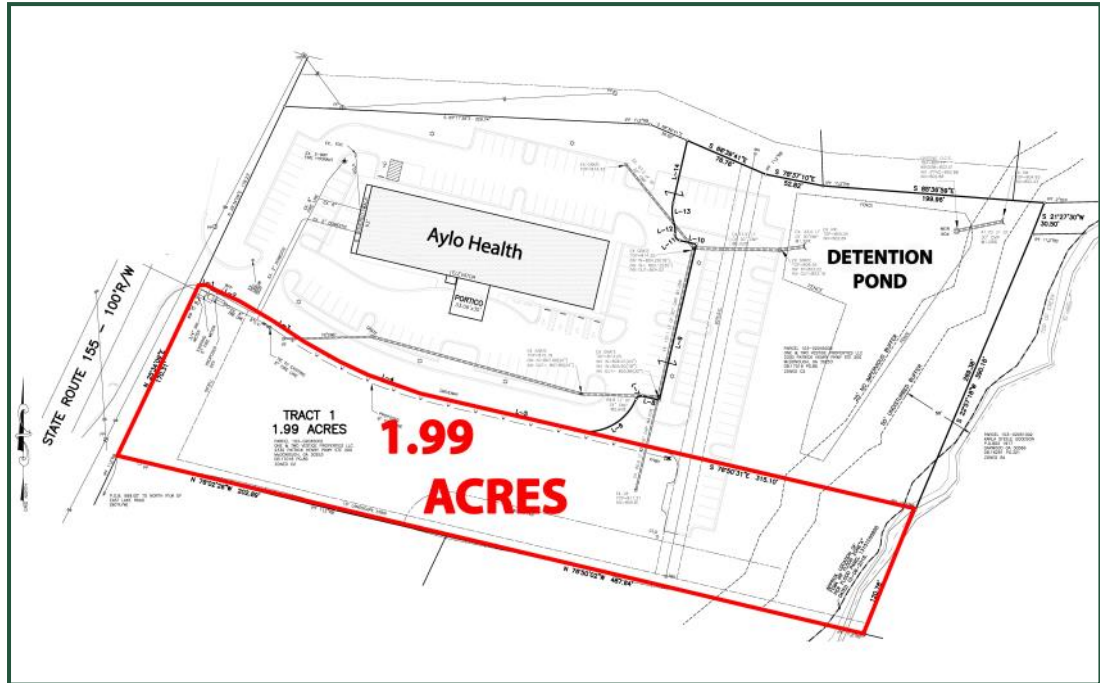
Patty Burns, CCIM, ALC
478-746-9421
patty@fickling.com

www.commercial.fickling.com

577 Mulberry St, Suite 1100 * P.O. Box 310 * Macon, GA 31202 | Phone (478) 746-9421 | Fax (478) 742-2015

This information is from resources deemed to be reliable, no warranties or guarantees for accuracy are made by Fickling and Company

FOR SALE - 1.99 ACRES
Hwy 155 at East Lake Pkwy
McDonough, GA



FORMER PROPOSED
CONCEPTUAL PLAN

FOR MORE
INFORMATION
CONTACT

Trip Wilhoit, CCIM, ALC
478-746-9421
twilhoit@fickling.com

Patty Burns, CCIM, ALC
478-746-9421
patty@fickling.com

www.commercial.fickling.com