

Residential Land For Sale  
2340 Crissey Drive  
Macon GA 31211



**LOT SIZE:** 39.42 acres

**FRONTAGE:** 575' ± on Crissey Rd

**DEPTH:** 430' ± on Graham Rd

**TAXES:** \$1,047.58 (2018)

**TOPOGRAPHY:** Rolling

**ZONING:** R-3

**UTILITIES:** All Available. Some infrastructure in place for water & sewer.

**ACCESS:** 2 points for ingress and egress

**NOTES:** This property is located off Gray Hwy at the Jones County/Bibb County line. Ideal for residential development with road frontage on both Crissey Dr and Graham Rd.

**BANK  
OWNED**

**Sale Price: \$599,000**

**FOR MORE  
INFORMATION  
CONTACT**

Trip Wilhoit, CCIM, ALC  
478-746-9421(O)  
478-960-4080 (C)  
trip@fickling.com

Patty Burns, CCIM, ALC  
478-746-9421 (O)  
478-951-5100 (C)  
patty@fickling.com

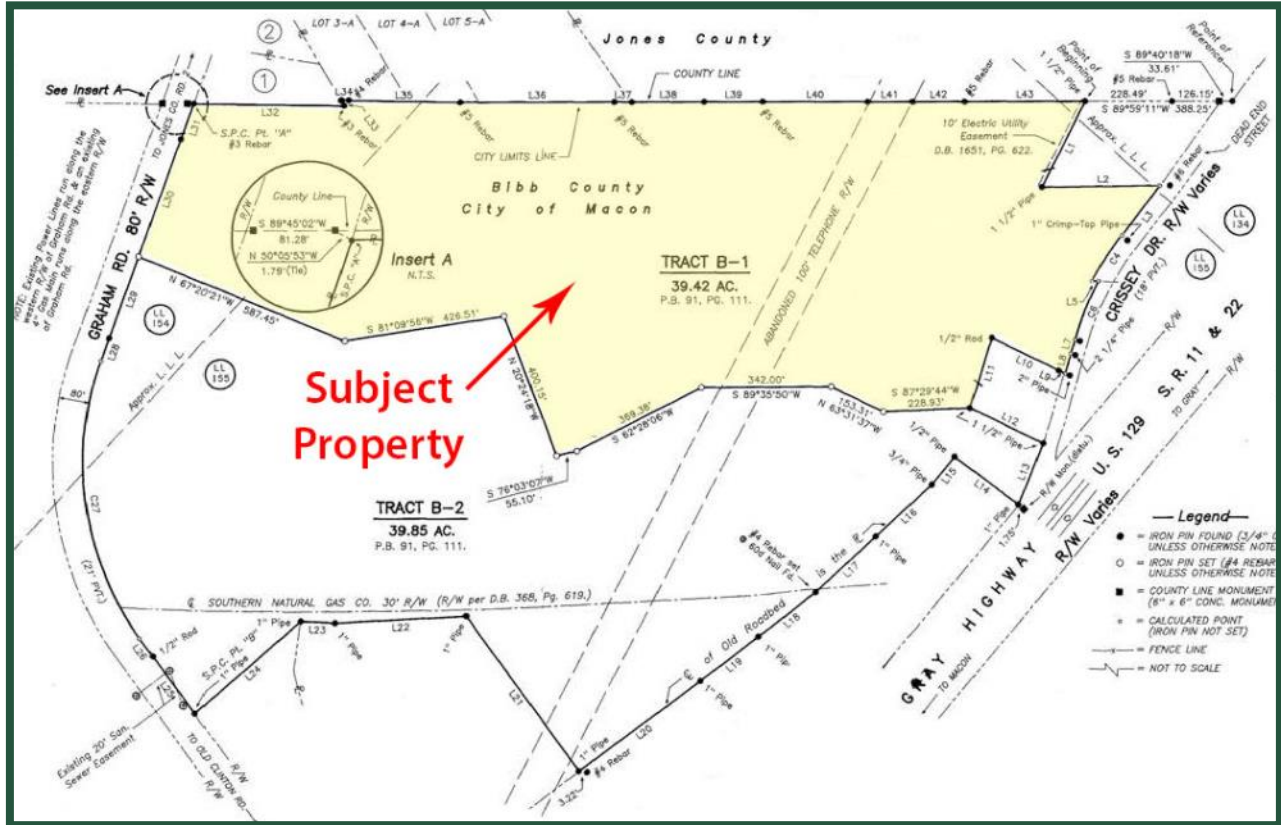
**georgiacommercialrealestate.net | commercial.fickling.com**

577 Mulberry St, Suite 1100 \* P.O. Box 310 \* Macon, GA 31202 | Phone (478) 746-9421 | Fax (478) 742-2015

This information is from resources deemed to be reliable, no warranties or guarantees for accuracy are made by Fickling and Company

Residential Land For Sale  
 2340 Crissey Drive  
 Macon GA 31211

**PLAT**



**DEMOGRAPHICS**

2018	1 mile	3 mile	5 mile
<b>Population</b>	1,428	18,903	52,485
<b>Avg. HH Income</b>	34.7	37.2	36.3
<b>Median Age</b>	\$49,535	\$49,717	\$55,630

**FOR MORE  
 INFORMATION  
 CONTACT**

**Trip Wilhoit, CCIM, ALC**  
 478-746-9421 (O)  
 478-960-4080 (C)  
[trip@fickling.com](mailto:trip@fickling.com)

**Patty Burns, CCIM, ALC**  
 478-746-9421 (O)  
 478-951-5100 (C)  
[patty@fickling.com](mailto:patty@fickling.com)

[georgiacommercialrealestate.net](http://georgiacommercialrealestate.net) | [commercial.fickling.com](http://commercial.fickling.com)

577 Mulberry St, Suite 1100 \* P.O. Box 310 \* Macon, GA 31202 | Phone (478) 746-9421 | Fax (478) 742-2015

This information is from resources deemed to be reliable, no warranties or guarantees for accuracy are made by Fickling and Company