

49 ± Acres
 3939 Hartley Bridge Rd
 Macon, GA 31216



DESCRIPTION: 49 ± acres in South Bibb County. 1 mile east of I-75

LOT SIZE: 49 ± Acres, Can be divided

ZONING: PDE

TRAFFIC: 11,100 Vehicles per day

NOTES: Possible owner financing. Multi-family, Residential, Commercial, Senior Housing, Storage are just some of the many uses for this property.

DEMOGRAPHICS

| 2018 | 1 mile | 3 mile | 5 mile |
|----------------|----------|----------|----------|
| Population | 2,506 | 16,133 | 41,361 |
| Avg. HH Income | \$90,788 | \$65,733 | \$51,854 |
| Median Age | 39.8 | 35.4 | 33.9 |

Reduced Price: \$695,000 (\$14,184/per acre)
~~**Sales Price: \$1,226,725 (\$25,000/per acre)**~~

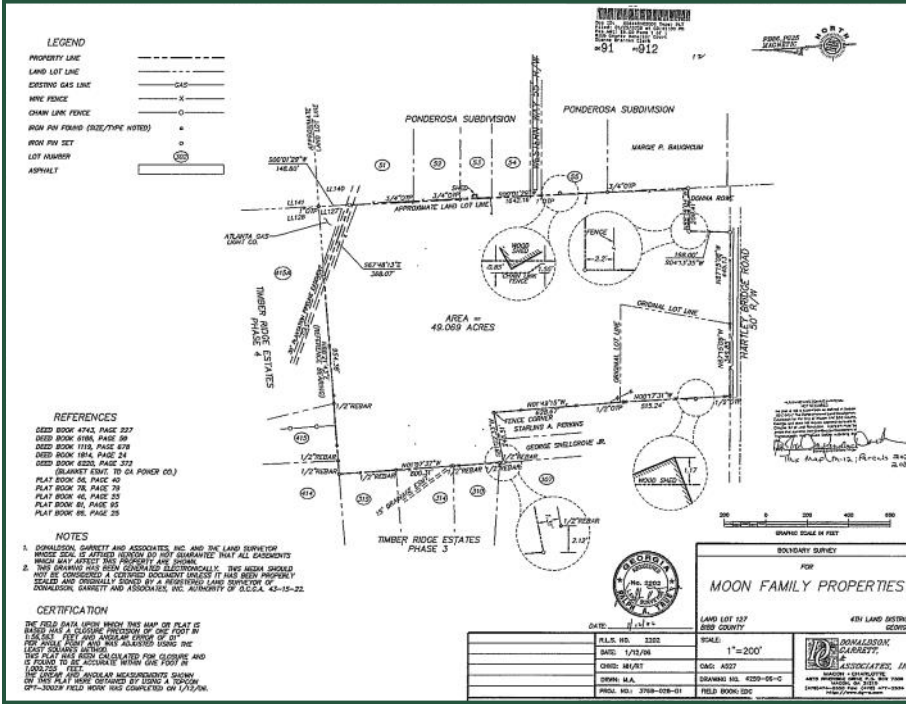
**FOR MORE
 INFORMATION
 CONTACT**

Chad W. Bevill
 Cell: 478-954-2159
 Main: 478-746-9421

cbevill@fickling.com
www.chadbevill.com
commercial.fickling.com

commercial.fickling.com

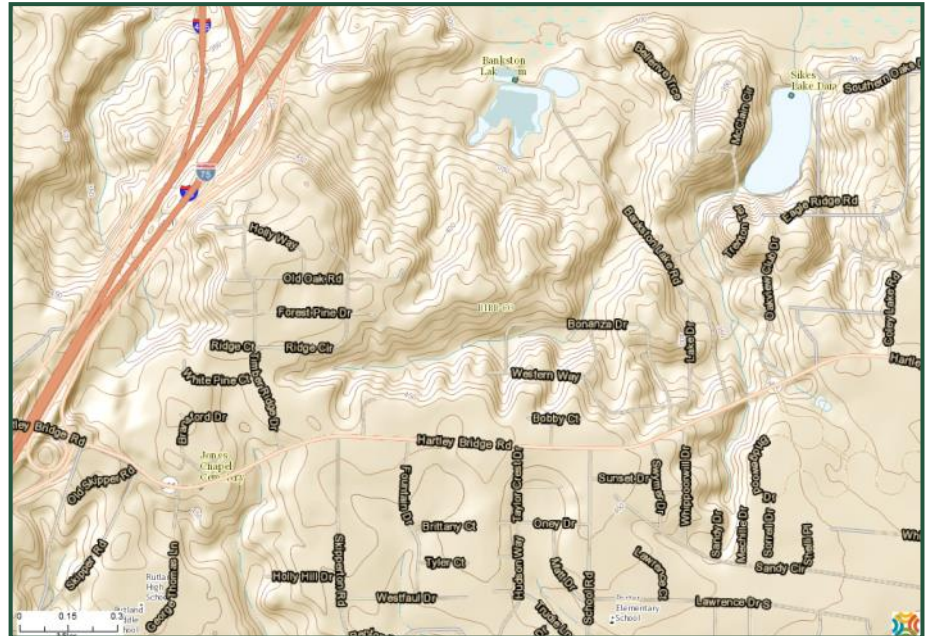
49 ± Acres
 3939 Hartley Bridge Rd
 Macon, GA 31216



PLAT



TOPO



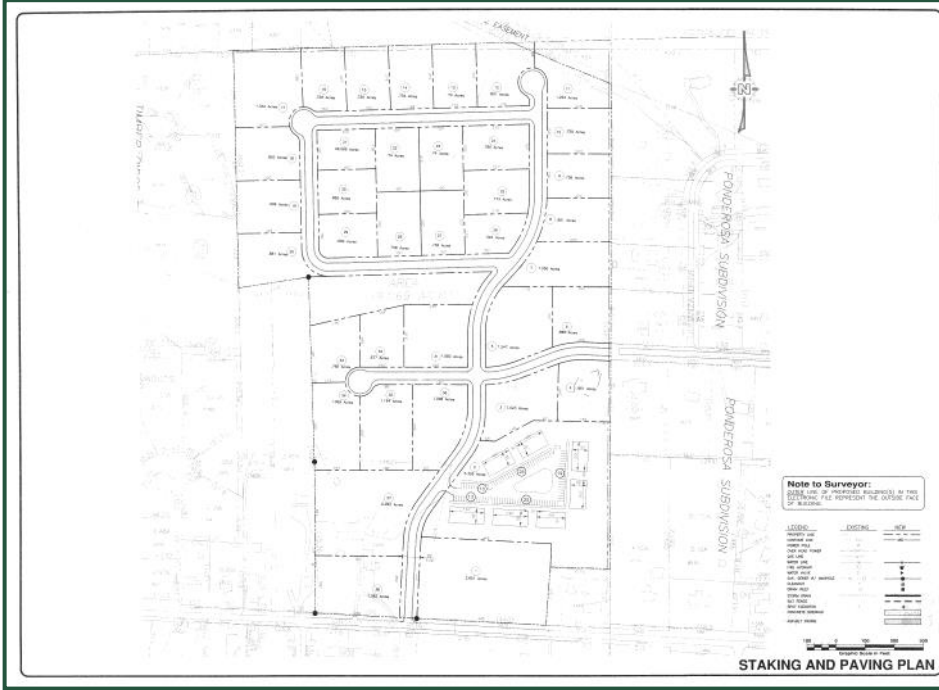
FOR MORE INFORMATION CONTACT

Chad W. Bevill
 Cell: 478-954-2159
 Main: 478-746-9421

cbevill@fickling.com
www.chadbevill.com
commercial.fickling.com

commercial.fickling.com

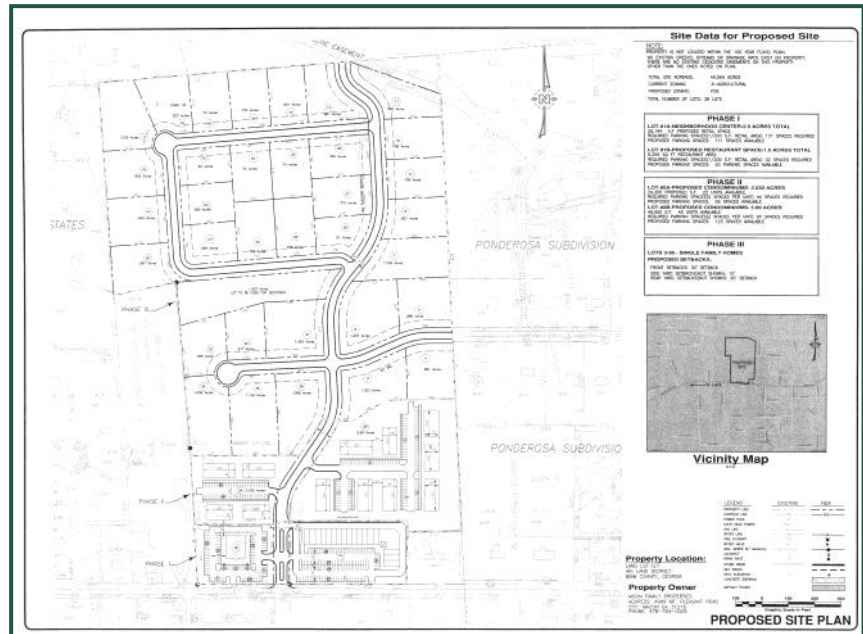
49 ± Acres
 3939 Hartley Bridge Rd
 Macon, GA 31216



STAKING & PAVING PLAN



PROPOSED SITE PLAN



**FOR MORE
 INFORMATION
 CONTACT**

Chad W. Bevill
 Cell: 478-954-2159
 Main: 478-746-9421

cbevill@fickling.com
www.chadbevill.com
commercial.fickling.com

commercial.fickling.com