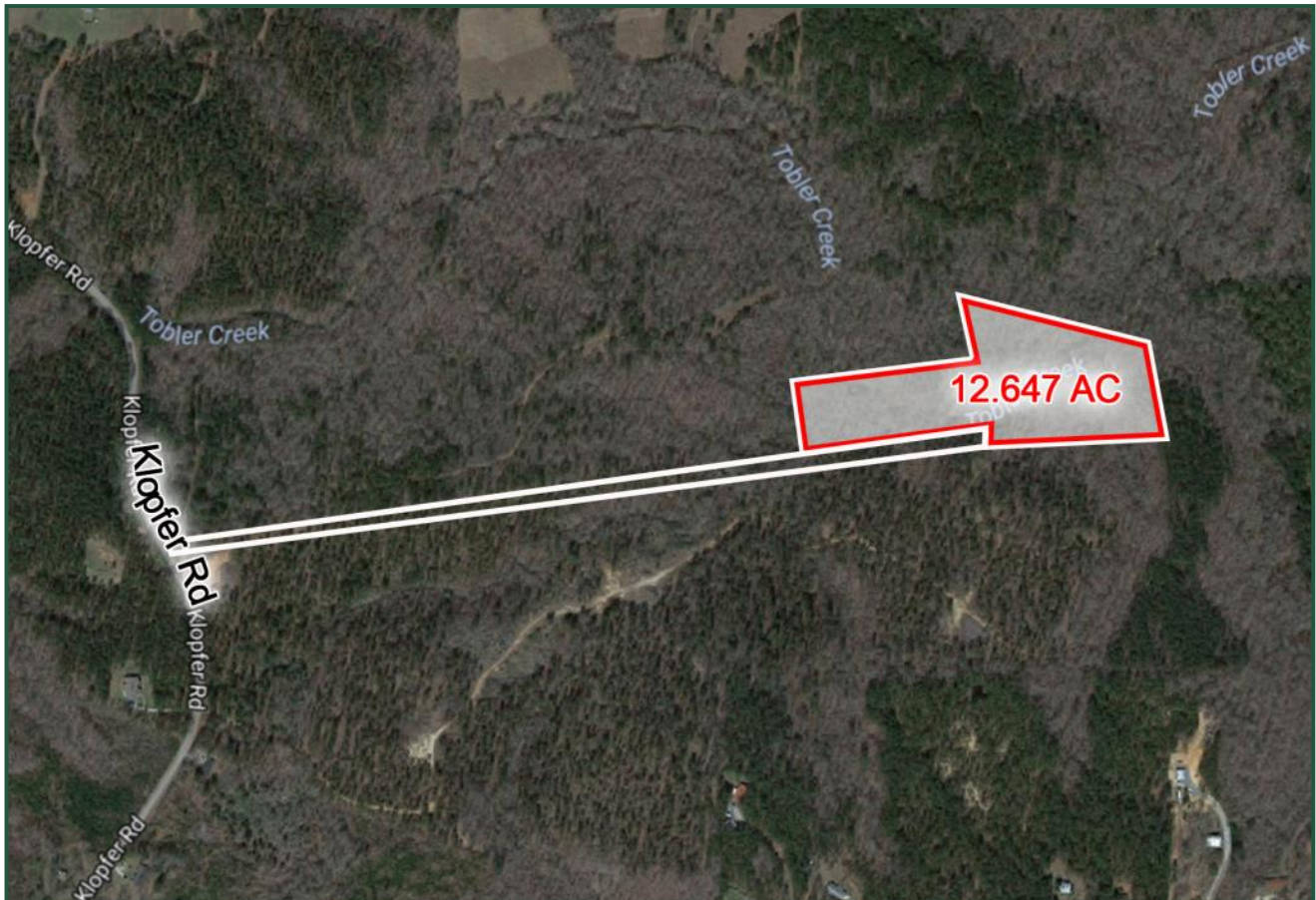


12.647 Acres
Klopfer Road
Juliette, GA 31046



LOT SIZE: 12.647 Acres

ZONING: Residential

UTILITIES: County Water

NOTES: Wooded undeveloped lot. Small creek on property. Access is by 60' private road. Driveway has not been constructed. Easy access to I-75 & I-475.

Sales Price: \$66,000

**FOR MORE
INFORMATION
CONTACT**

Chad W. Bevill
Cell: 478-954-2159
Main: 478-746-9421

cbevill@fickling.com
www.chadbevill.com
commercial.fickling.com

commercial.fickling.com

577 Mulberry St, Suite 1100 * P.O. Box 310 * Macon, GA 31202 | Phone (478) 746-9421 | Fax (478) 742-2015

This information is from resources deemed to be reliable, no warranties or guarantees for accuracy are made by Fickling and Company



**FICKLING
& COMPANY**
A Full Service Real Estate Company
commercial.fickling.com



cbevill@fickling.com
www.chadbevill.com
commercial.fickling.com

577 Mulberry St, Suite 1100 * P.O. Box 310 * Macon, GA 31202 | Phone (478) 746-9421 | Fax (478) 742-2015
This information is from resources deemed to be reliable, no warranties or guarantees for accuracy are made by Fickling and Company