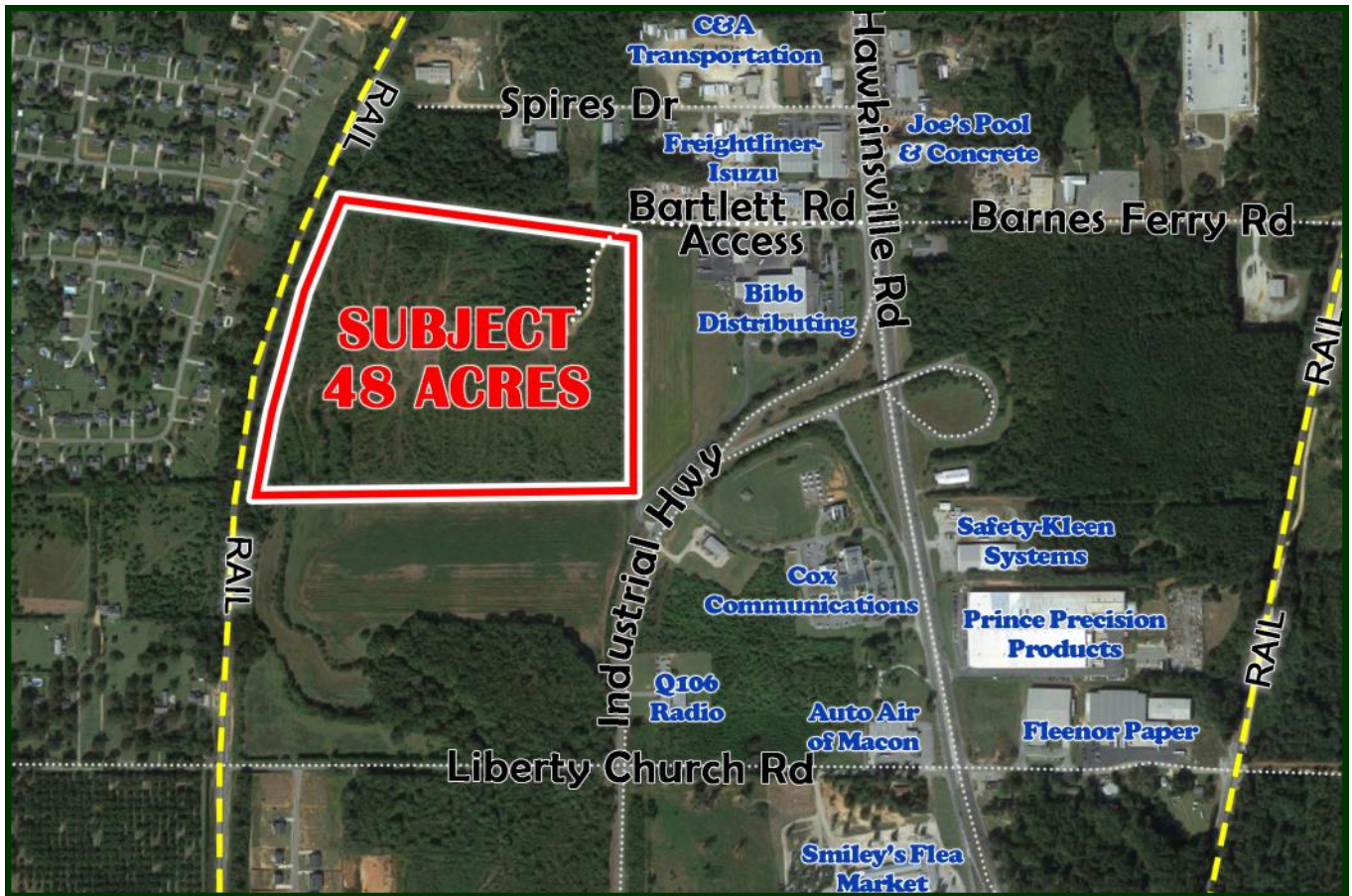


48 ACRES AVAILABLE

2471 BARTLETT RD * MACON, GA



Location: Industrial Acreage located off Hwy 247. Convenient to Macon Airport and Robins Air Force Base. Ideal Industrial Development Tract

Lot Size: 48 Acres

Zoning: M-1

Property

Taxes: \$2,137 (2016)

Utilities: Water, Sewer and Power

Rail: Norfolk Southern Rail adjacent to property

Nearby

Businesses: Bibb Distributing, Joe's Pool & Concrete, C&A Transportation, Fleenor Paper, Smiley's Flea Market

Sale Price: \$864,000
(\$18,000/Acre)



A Full Service Real Estate Company

Larry Crumbley

CCIM, CPM, SIOR

Cell: 478-737-3381

Email: lcrumbley@fickling.com

Web: www.lcrumbley.com

Commercial Division

577 Mulberry Street

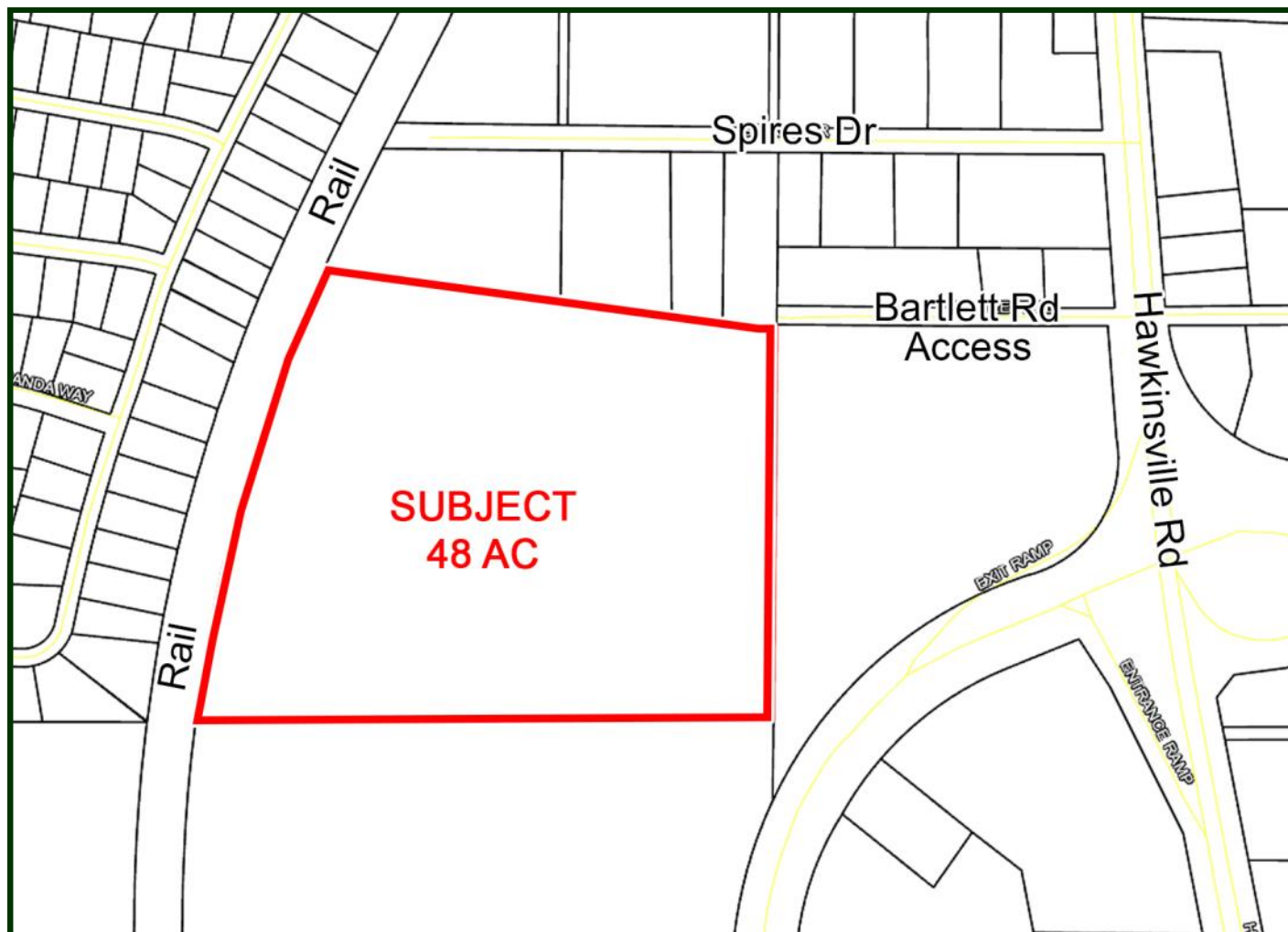
Suite 1100

Macon, GA 31201

Phone: 478-746-9421

48 ACRES AVAILABLE

2471 BARTLETT RD * MACON, GA



DEMOGRAPHICS - 2016

	1 Mile	3 Mile	5 Mile
Population	520	7,522	32,136
Median Age	39.4	40.6	35.6
Average HH Income	\$50,805	\$68,611	\$50,272



A Full Service Real Estate Company

Larry Crumbley

CCIM, CPM, SIOR

Cell: 478-737-3381

Email: lcrumbley@fickling.com

Web: www.lcrumbley.com

Commercial Division

577 Mulberry Street

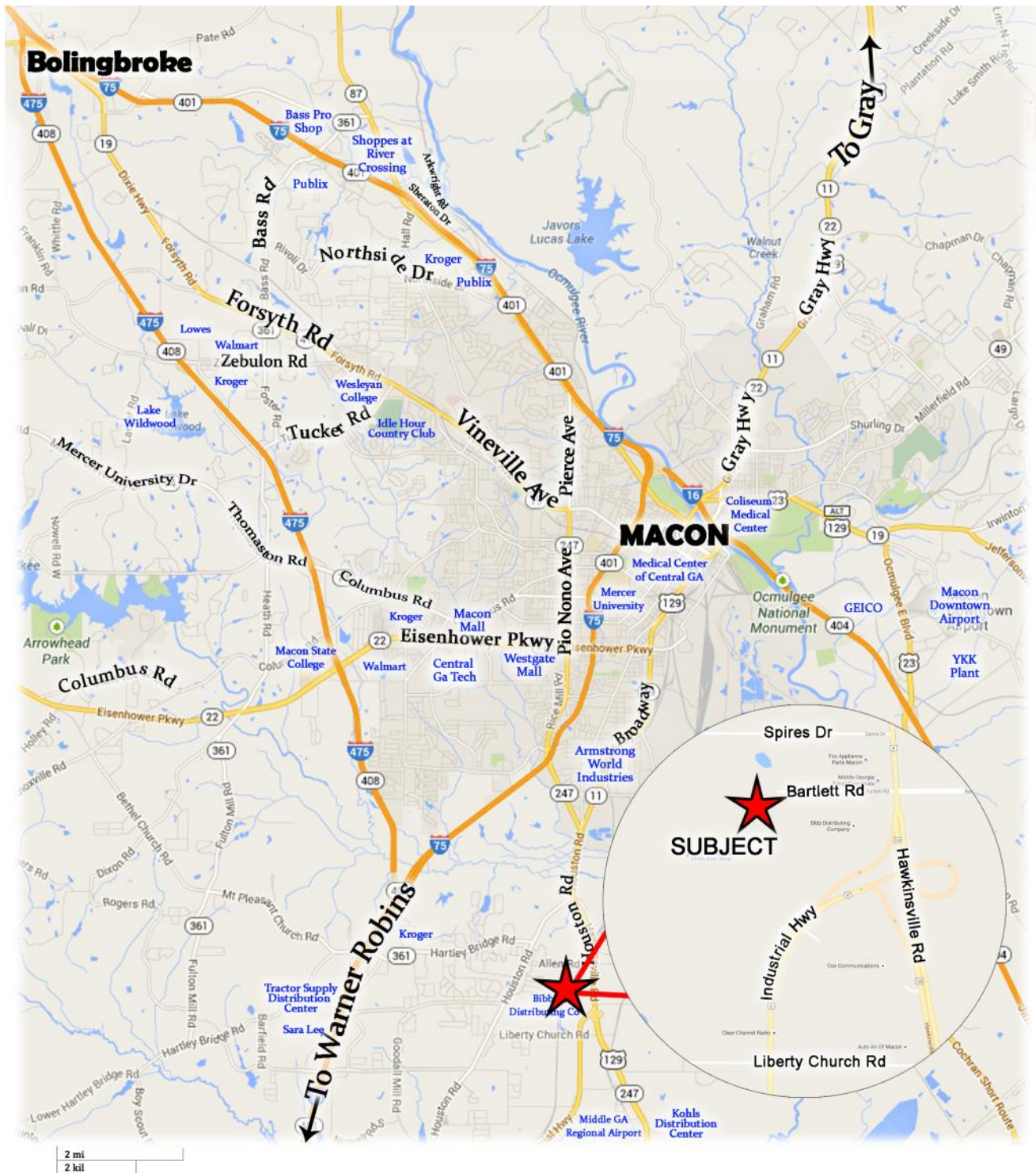
Suite 1100

Macon, GA 31201

Phone: 478-746-9421

48 ACRES AVAILABLE

2471 BARTLETT RD * MACON, GA



Contact:
Larry Crumbley, CCIM, CPM, SIOR
Phone: 478-746-9421 Cell: 478-737-3381
Email: lcrumbley@fickling.com
For detailed property information see
www.lcrumbley.com

Commercial Division
577 Mulberry Street
P.O. Box 310
Macon, GA 31202
(478) 746-9421
(478) 742-2015 FAX

www.fickling.com

This information is from resources deemed to be reliable, no warranties or guarantees for accuracy are made by Fickling and Company