

**SUMMIT AT THE MALL**  
**3755 Bloomfield Road**  
**Macon, GA 31206**



Summary

Area Info

Site Plan

Floor Plans

Aerial

**LIMITED TIME PRICE REDUCTION**



**CONTACT**

**Lan Heath**  
478-746-9421 Office  
478-731-5899 Cell  
lheath@fickling.com



577 Mulberry St, Suite 1100  
Macon, GA 31201  
478.746.9421 Office  
<https://commercial.fickling.com>

This information is from resources deemed to be reliable and is subject to change without notice. No warranties or guarantees for accuracy are made by Fickling and Company.

**PROPERTY INFORMATION**

**BUILDING**

**Property Address:** 3755 Bloomfield Road  
 Macon, GA 31206

**County:** Bibb

**Total Size:** 84,551 SF

**Available:** 1,600 SF - 28,300 SF

**Utilities:** All Available

**Parking:** Paved, on site

**Traffic Count:** Bloomfield Rd: 8,750 VPD  
 Mercer University Dr: 26,715 VPD  
 Eisenhower Pkwy: 23,963 VPD

**SITE**

**Site Size:** 10.33 Acres

**Parcel ID:** M084-0266, M084-0265, M084-0207,  
 M084-0015, M084-0222

**Zoning:** PDC

<b>Demographics 2024</b>	<b>1 Mile</b>	<b>3 Miles</b>	<b>5 Miles</b>
Population	5,492	48,703	90,381
Avg HH Income	\$37,144	\$53,007	\$73,779
Median Age	32.1	32.9	35.1

~~**LEASE RATE: \$12.00/PSF**~~  
**REDUCED RATE\*: \$3.65 to \$6.00/PSF**

**CAM, Taxes, Insurance total estimated at \$3.21/PSF Annually**

\*Terms & Conditions Apply

**CONTACT**

**Lan Heath**  
 478-746-9421 Office  
 478-731-5899 Cell  
 lheath@fickling.com



577 Mulberry St, Suite 1100  
 Macon, GA 31201  
 478.746.9421 Office  
<https://commercial.fickling.com>

## SHOPPING CENTER

Summit at the Mall offers versatile retail spaces ranging from 1,600 - 28,300 SF, with competitive NNN lease rates. Tenant roster includes Truist Bank, Foot Locker, Rent-A-Center, Pizza Hut, and No Name Chicken.

## LOCATION

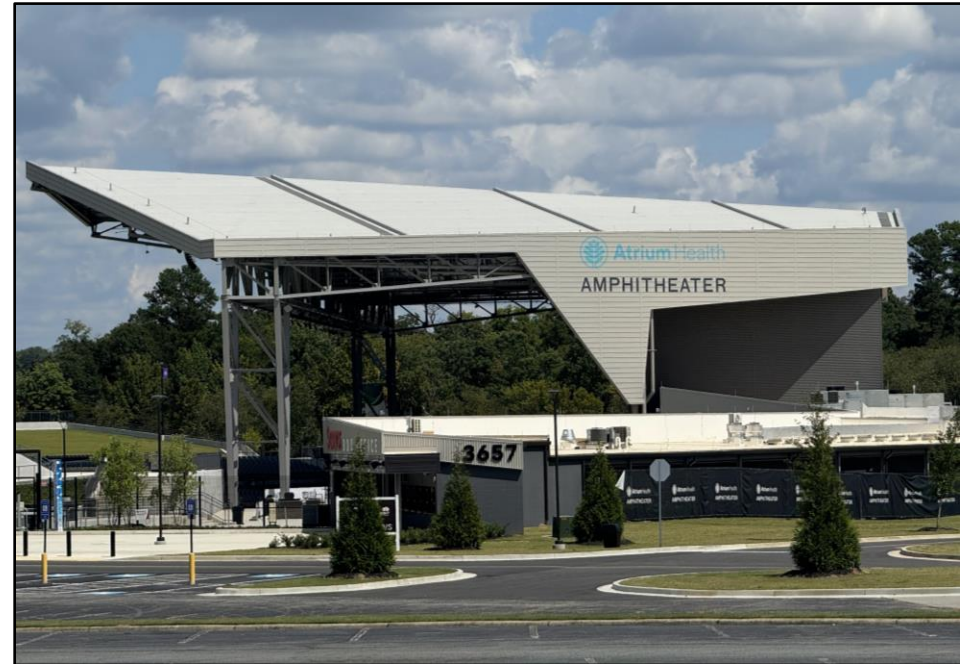
Located at the corner of Bloomfield Drive and Mercer University Drive, with excellent proximity to Macon Mall and the new 12,000 seat outdoor amphitheater.

Macon's come a long way in a short time. The new Atrium Health Amphitheatre seats 12,000 visitors with regular, consistent quality entertainment. Click [link](#) to view more information on the Atrium Health Amphitheatre.

## CONTACT

**Lan Heath**  
478-746-9421 Office  
478-731-5899 Cell  
lheath@fickling.com

The Macon Mall has been fitted with the world's largest pickle ball courts, and in partnership with Macon-Bibb County, has relocated numerous county government agencies and offices with nearly 900 employees.



577 Mulberry St, Suite 1100  
Macon, GA 31201  
478.746.9421 Office  
<https://commercial.fickling.com>

**Site Plan**



**AVAILABILITY**

Suite	SF	Monthly Rent including estimated CAM, Tax & Insurance
1	28,300	\$19,400
3	2,000	\$1,535
9	2,500	\$1,919
12A	±1,600	\$1,228
13A	2,538	\$1,948
16	10,350	\$6,000

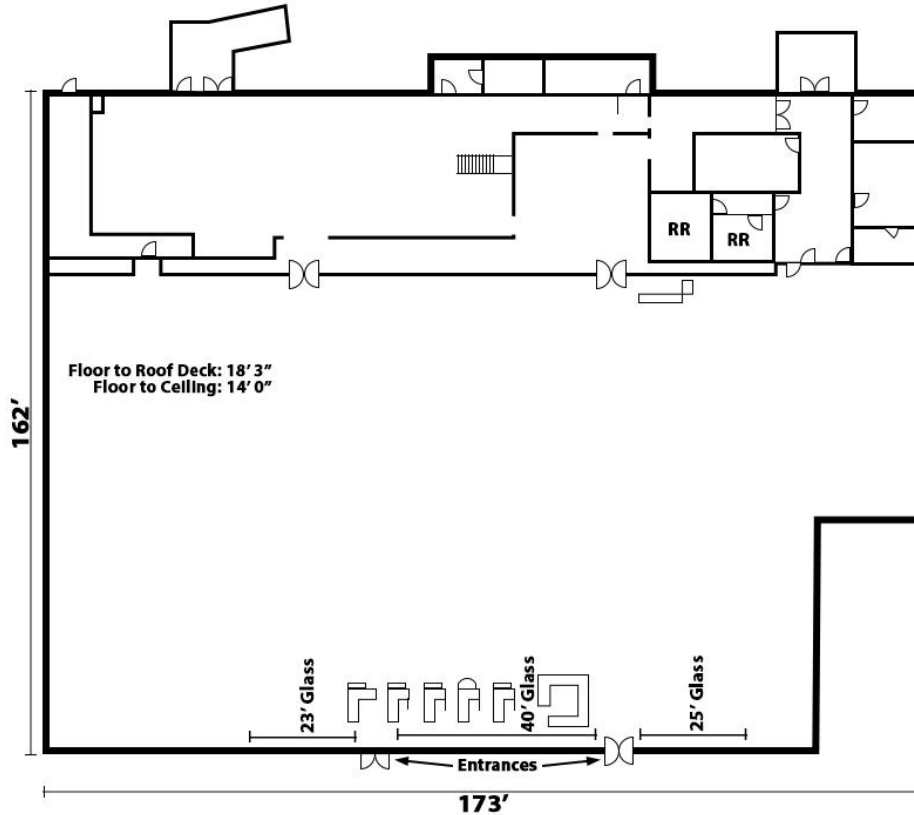
**CONTACT**

**Lan Heath**  
 478-746-9421 Office  
 478-731-5899 Cell  
 lheath@fickling.com

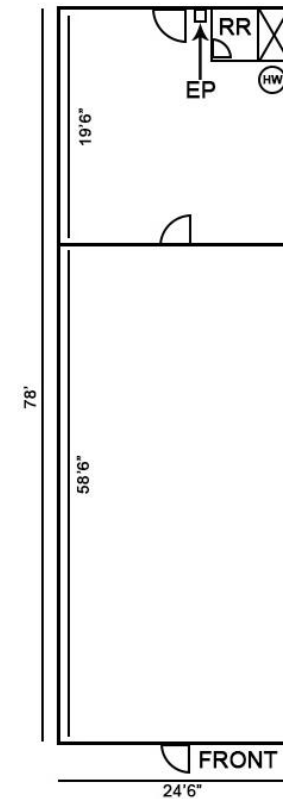


577 Mulberry St, Suite 1100  
 Macon, GA 31201  
 478.746.9421 Office  
<https://commercial.fickling.com>

Suite 1



Suite 3



\*All measurements and all calculations of area are approximate and not guaranteed

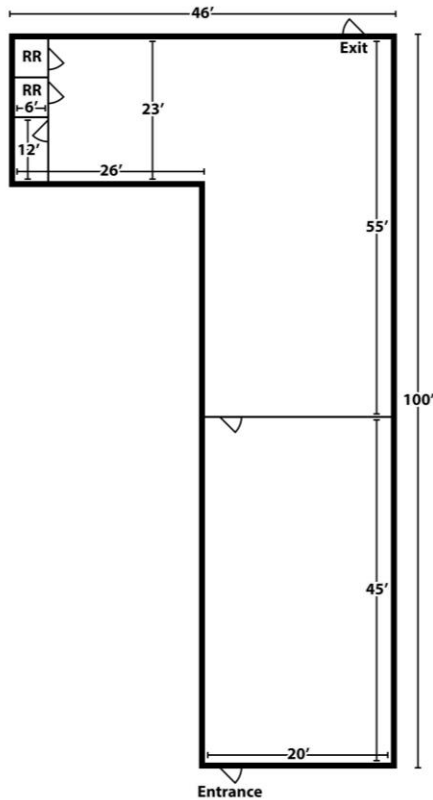
**CONTACT**

**Lan Heath**  
478-746-9421 Office  
478-731-5899 Cell  
lheath@fickling.com

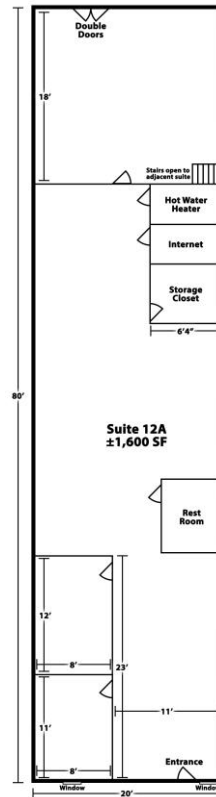


577 Mulberry St, Suite 1100  
Macon, GA 31201  
478.746.9421 Office  
<https://commercial.fickling.com>

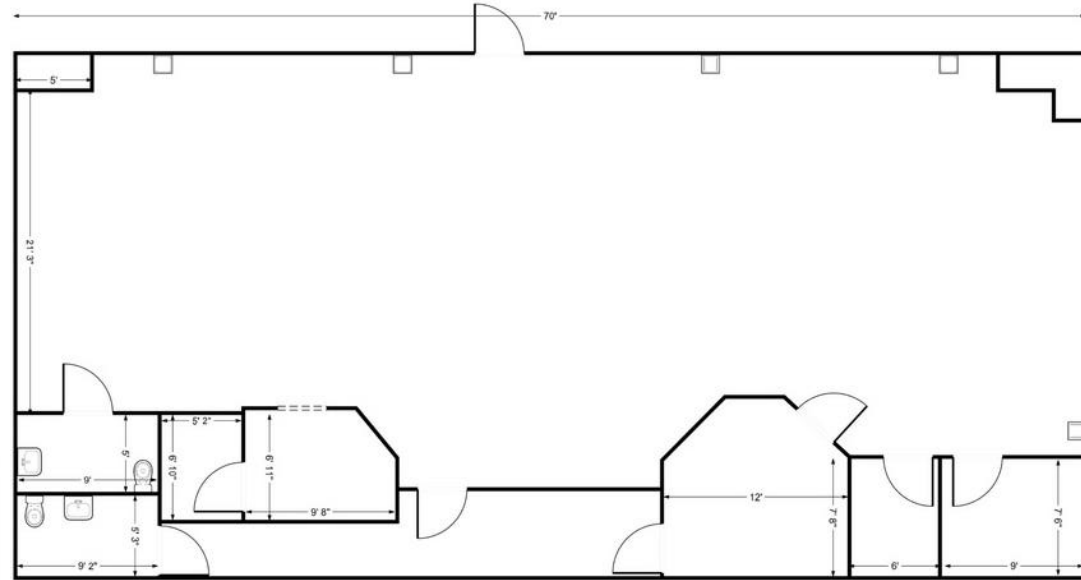
Suite 9



Suite 12A



Suite 13A



\*All measurements and all calculations of area are approximate and not guaranteed

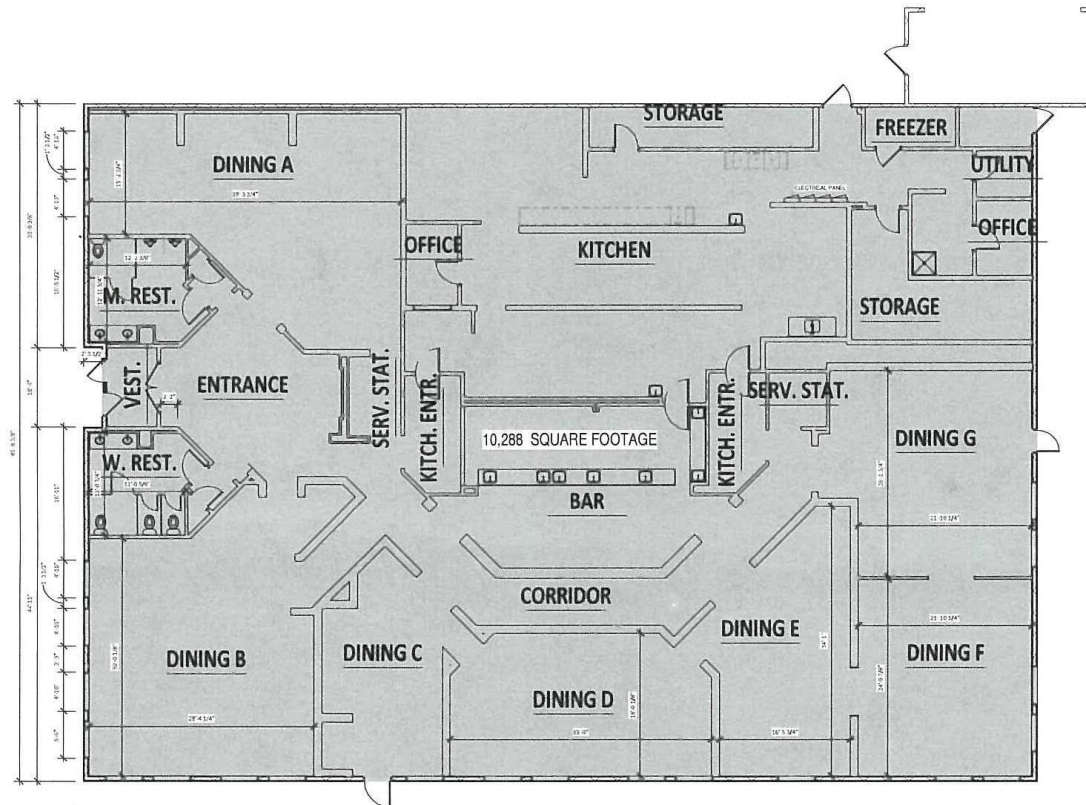
**CONTACT**

**Lan Heath**  
478-746-9421 Office  
478-731-5899 Cell  
lheath@fickling.com



577 Mulberry St, Suite 1100  
Macon, GA 31201  
478.746.9421 Office  
<https://commercial.fickling.com>

**Suite 16 - Restaurant Space**



\*All measurements and all calculations of area are approximate and not guaranteed

**CONTACT**

**Lan Heath**  
478-746-9421 Office  
478-731-5899 Cell  
lheath@fickling.com



577 Mulberry St, Suite 1100  
Macon, GA 31201  
478.746.9421 Office  
<https://commercial.fickling.com>

# SUMMIT AT THE MALL

3755 Bloomfield Road  
Macon, GA 31206



Summary

Area Info

Site Plan

Floor Plans

Aerial



## CONTACT

**Lan Heath**  
478-746-9421 Office  
478-731-5899 Cell  
lheath@fickling.com



577 Mulberry St, Suite 1100  
Macon, GA 31201  
478.746.9421 Office  
<https://commercial.fickling.com>