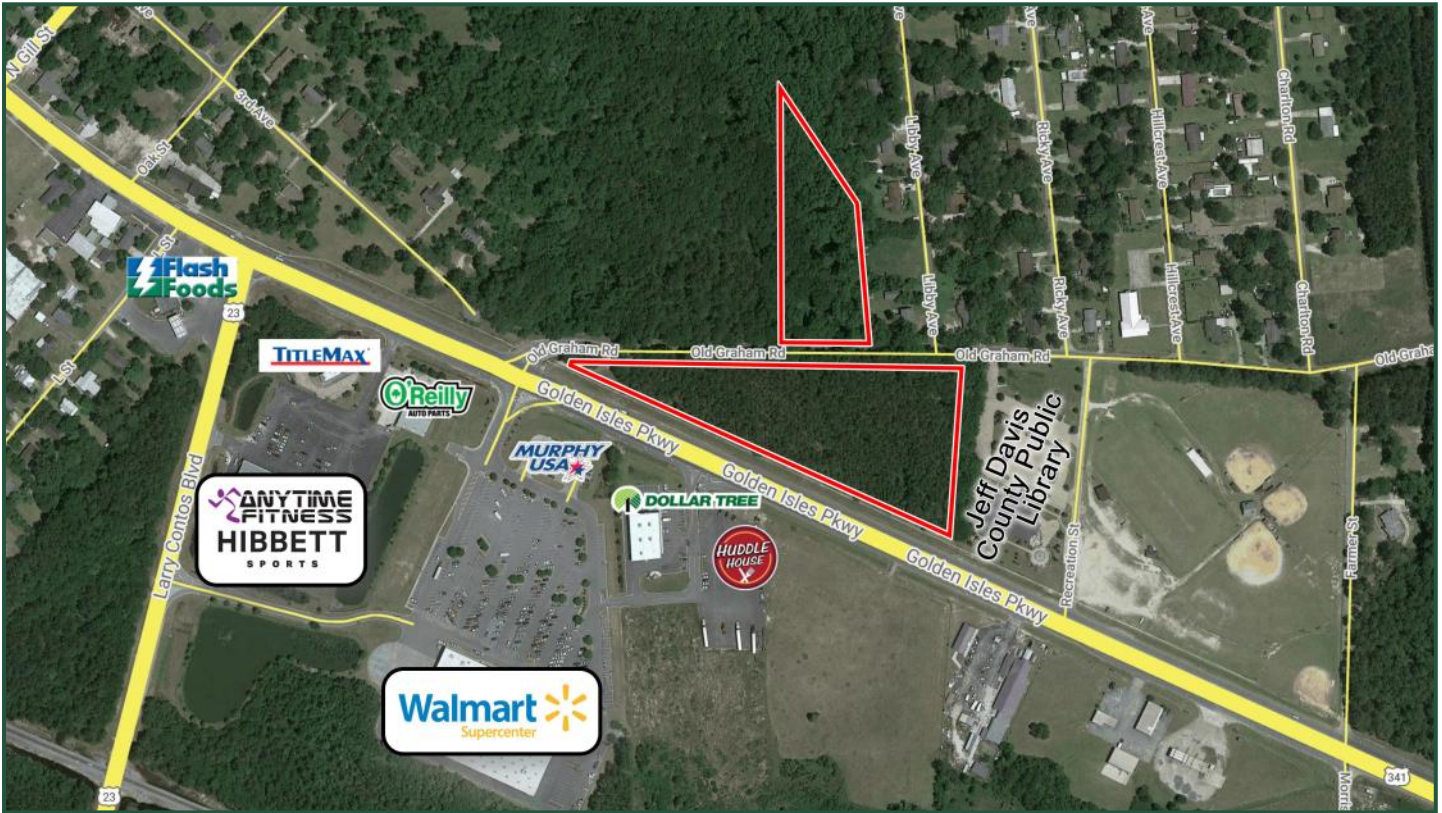


# 9.53 Acres

St Route 27/Golden Isles Pkwy  
Hazlehurst, GA 31539



**LOT SIZE:** 9.53 Acres

**Sales Price: \$448,000**

**ZONING:** C-4

**LOCATION:** Jeff Davis County, across the street from Walmart on the Golden Isles Pkwy

**NOTES:** High traffic counts (13,000 vpd). Surrounded by new businesses. Very level lot with 350' road frontage on the highway and 335' on Old Graham Road. Great visibility.

2018 Demos	1 mile	3 mile	5 mile
Population	1,145	7,283	11,029
Avg. HH Income	\$45,632	\$49,027	\$49,872
Median Age	36.1	35.5	35.5

**FOR MORE  
INFORMATION  
CONTACT**

**Chad W. Bevill**  
Cell: 478-954-2159  
Main: 478-746-9421

[cbevill@fickling.com](mailto:cbevill@fickling.com)  
[www.chadbevill.com](http://www.chadbevill.com)  
[commercial.fickling.com](http://commercial.fickling.com)

[commercial.fickling.com](http://commercial.fickling.com)