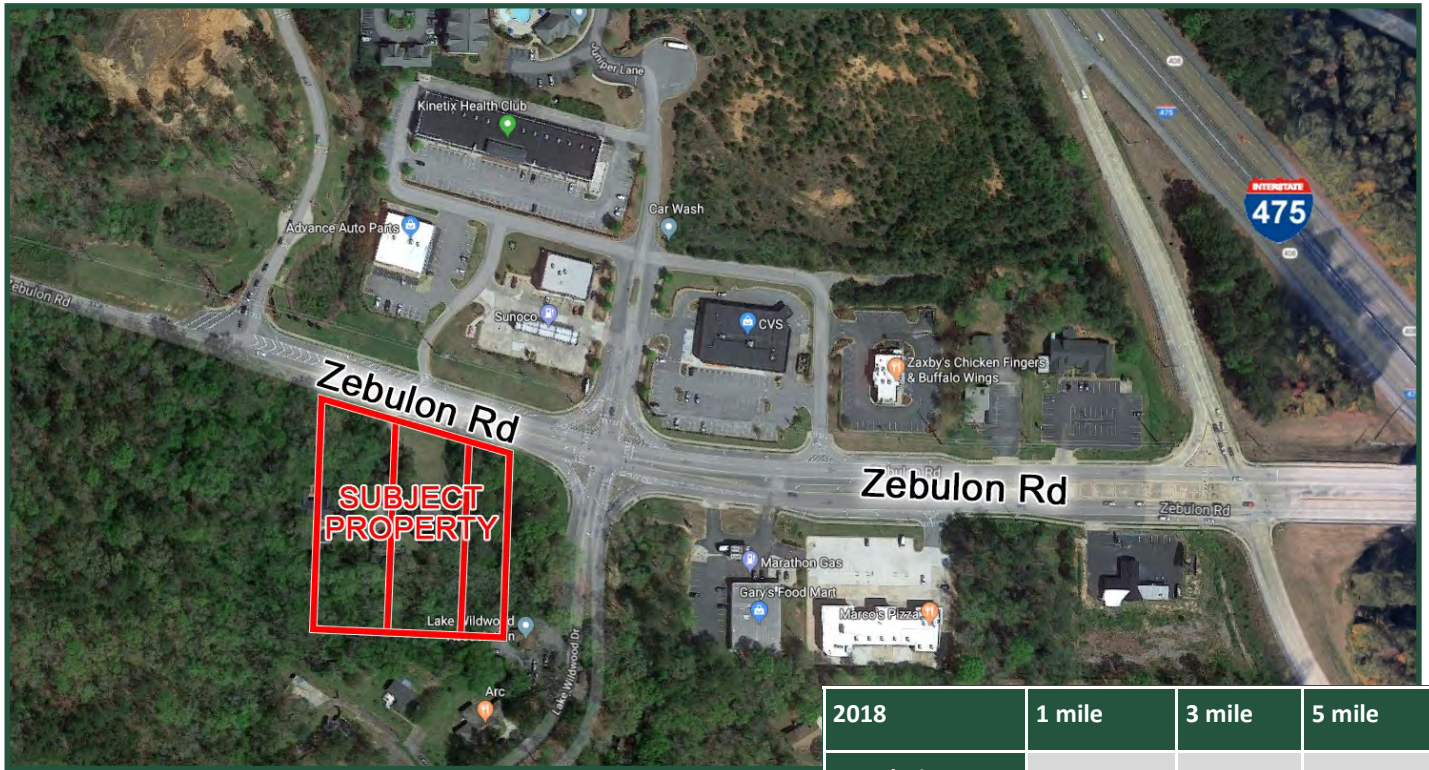


DEVELOPMENT POTENTIAL

3.2± Acres For Sale

6450, 6460, 6470 Zebulon Rd

Macon, GA 31220



- Lot Size:** 3.2± Acres (3 parcels)
- Frontage:** 360'± Frontage on Zebulon Rd.
- Zoning:** AG
- Traffic:** 26,800 Zebulon Rd VPD
- Topography:** Level
- Curb Cuts:** 2
- Neighbors:** Ansley Village Apartments & Shopping Center, Advance Auto Parts, CVS, Marcos, Zaxby's, Kohl's, Kroger, Lowe's, Walmart, AmStar Theater, McDonald's

2018	1 mile	3 mile	5 mile
Population	3,485	15,617	42,546
Avg. HH Income	\$90,430	\$96,794	\$101,053
Median Age	37.1	39.6	38.4

Notes:

- Ideal location for retail, fast food or office
- Convenient to I-475
- Property currently has 2 houses located on it

Sale Price:

\$990,000

**FOR MORE
INFORMATION
CONTACT**

Larry Drinkard, Commercial Sales
478-746-9421 (O)
478-731-3248 (C)
ldrinkard@fickling.com

commercial.fickling.com

577 Mulberry St, Suite 1100 * P.O. Box 310 * Macon, GA 31202 | Phone (478) 746-9421 | Fax (478) 742-2015

This information is from resources deemed to be reliable, no warranties or guarantees for accuracy are made by Fickling and Company

DEVELOPMENT POTENTIAL

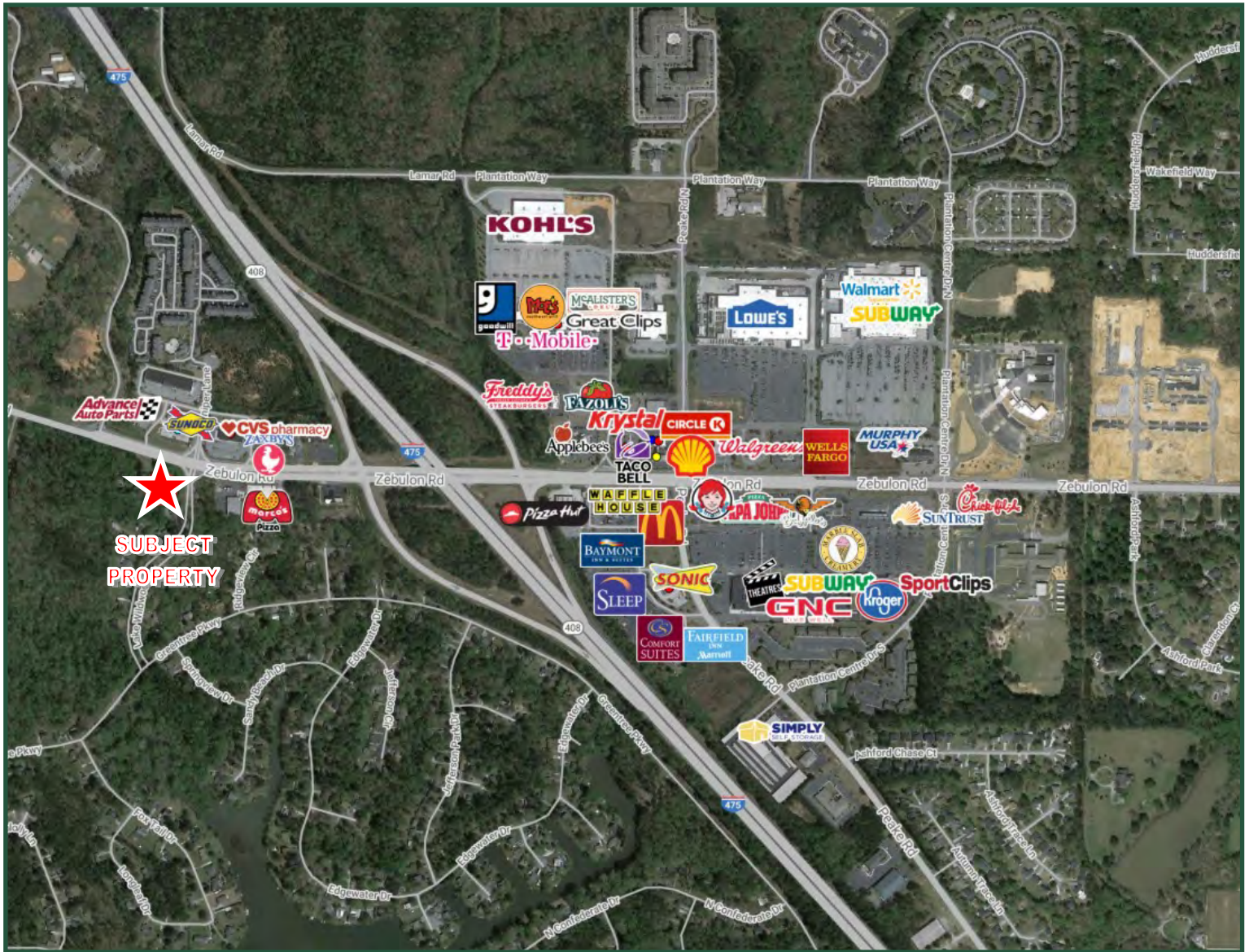
3.2± Acres For Sale

6450, 6460, 6470 Zebulon Rd

Macon, GA 31220



AERIAL



**FOR MORE
INFORMATION
CONTACT**

Larry Drinkard, Commercial Sales
478-746-9421 (O)
478-731-3248 (C)
ldrinkard@fickling.com

commercial.fickling.com

577 Mulberry St, Suite 1100 * P.O. Box 310 * Macon, GA 31202 | Phone (478) 746-9421 | Fax (478) 742-2015

This information is from resources deemed to be reliable, no warranties or guarantees for accuracy are made by Fickling and Company