

# FORMER BANK BRANCH FOR SALE

1302 Gray Hwy

Macon, GA 31211

 **FICKLING  
& COMPANY**  
A Full Service Real Estate Company  
[commercial.fickling.com](http://commercial.fickling.com)



**Building Size:** 2,652 SF Building

**Lot Size:** 1.16 Acres

**Built:** 1972

**Utilities:** All available

**Property Taxes:** \$2,441.89 (2018)

**Zoning:** C-4

**Traffic:** 47,600 VPD on Gray Hwy  
23,900 VPD on Shurling Dr

**Notes:**

- Served by traffic light at one of Middle Georgia's highest traffic corridor's
- Located on main highway between Jones County and Macon
- Potential redevelopment opportunity

**Reduced Price: \$500,000**  
~~**Sale Price: \$675,000**~~

**FOR MORE  
INFORMATION  
CONTACT**

Larry E. Crumbley, CPM, CCIM, SIOR  
478-746-9421 (O)  
478-737-3381 (C)  
[lcrumbley@fickling.com](mailto:lcrumbley@fickling.com)



[commercial.fickling.com](http://commercial.fickling.com)

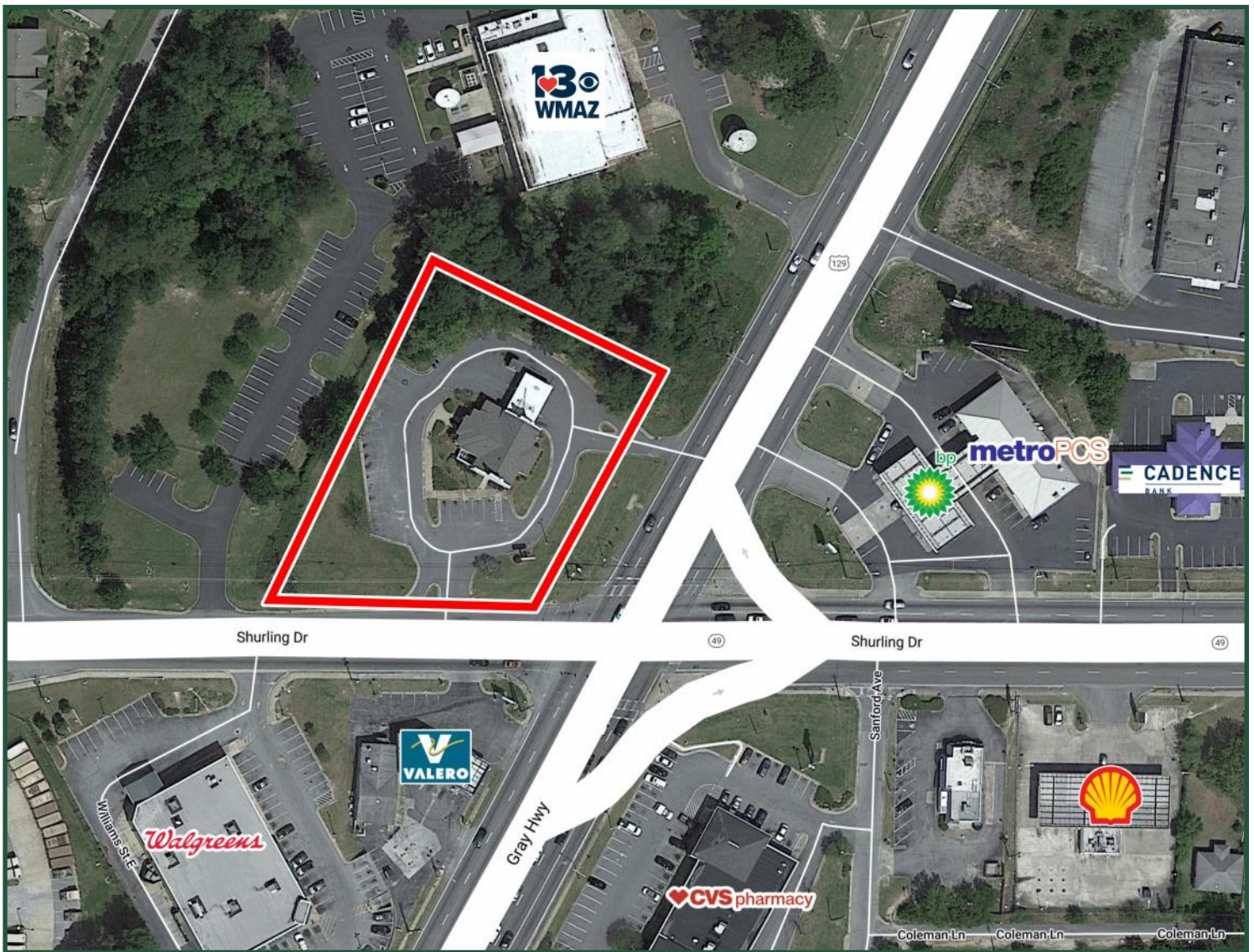
577 Mulberry St, Suite 1100 \* P.O. Box 310 \* Macon, GA 31202 | Phone (478) 746-9421 | Fax (478) 742-2015

This information is from resources deemed to be reliable, no warranties or guarantees for accuracy are made by Fickling and Company



# FORMER BANK BRANCH FOR SALE

1302 Gray Hwy  
Macon, GA 31211



Demographics 2018	1 Mile	3 Mile	5 Mile
Population	6,914	31,278	73,213
Median Age	35.5	36.1	35.7
Average HHI	\$38,392	\$47,034	\$48,059

**FOR MORE  
INFORMATION  
CONTACT**

Larry E. Crumbley, CPM, CCIM, SIOR  
478-746-9421 (O)  
478-737-3381 (C)  
[lcrumbley@fickling.com](mailto:lcrumbley@fickling.com)



[commercial.fickling.com](http://commercial.fickling.com)

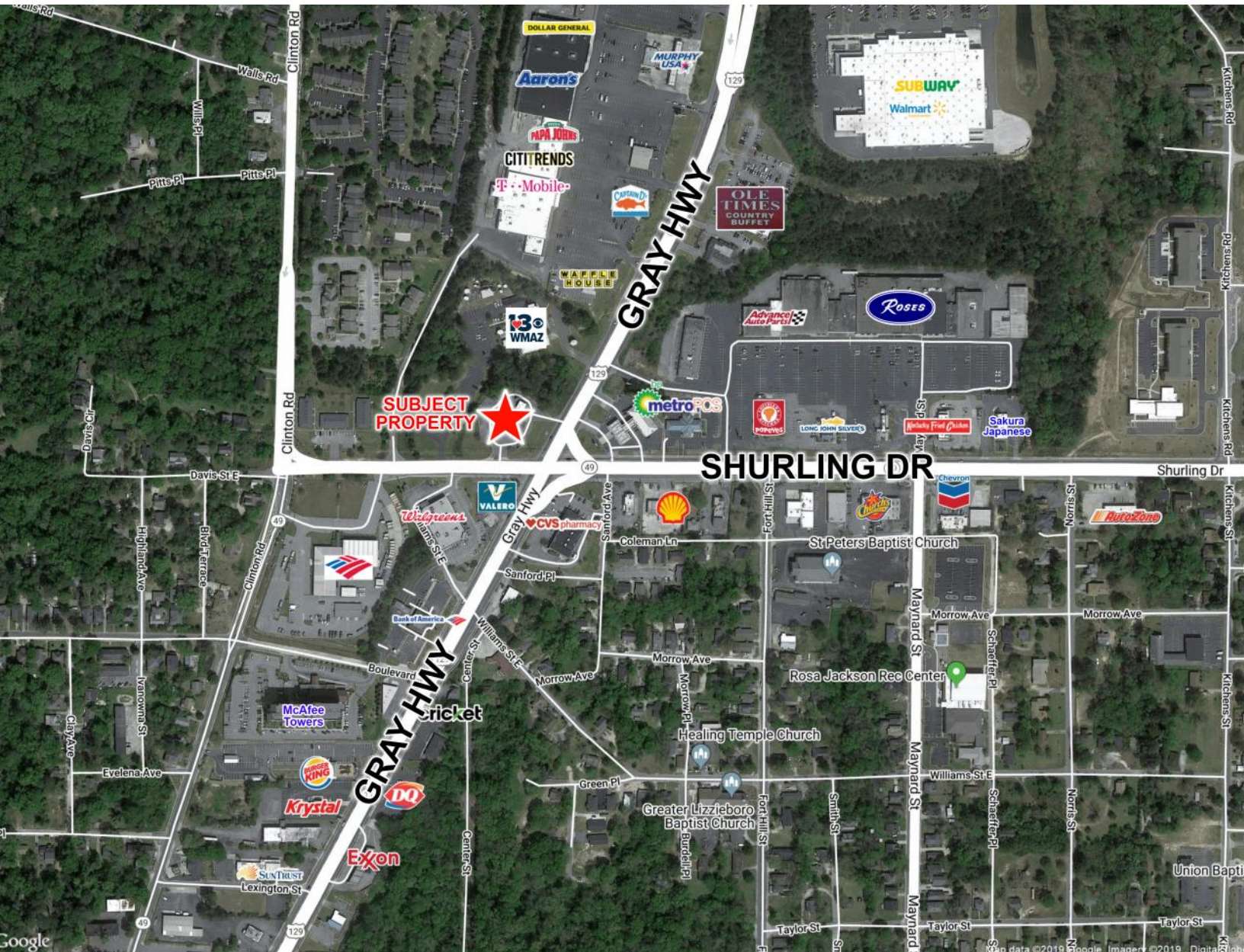
577 Mulberry St, Suite 1100 \* P.O. Box 310 \* Macon, GA 31202 | Phone (478) 746-9421 | Fax (478) 742-2015  
This information is from resources deemed to be reliable, no warranties or guarantees for accuracy are made by Fickling and Company



FORMER BANK BRANCH FOR SALE  
1302 Gray Hwy  
Macon, GA 31211

 **FICKLING  
& COMPANY**  
A Full Service Real Estate Company  
[commercial.fickling.com](http://commercial.fickling.com)

## AERIAL



FOR MORE  
INFORMATION  
CONTACT

Larry E. Crumbley, CPM, CCIM, SIOR  
478-746-9421 (O)  
478-737-3381 (C)  
[lcrumbley@fickling.com](mailto:lcrumbley@fickling.com)



[commercial.fickling.com](http://commercial.fickling.com)

577 Mulberry St, Suite 1100 \* P.O. Box 310 \* Macon, GA 31202 | Phone (478) 746-9421 | Fax (478) 742-2015  
This information is from resources deemed to be reliable, no warranties or guarantees for accuracy are made by Fickling and Company