

Residential Development Opportunity

Highway 18 East

Gray, GA 31032 (Jones County)



LOT SIZE: 48.5± Acres

FRONTAGE: 1,287'± on Highway 18 East

TOPOGRAPHY: Level

TAXES: \$3,496.99 (2024 est.)

UTILITIES: All available

ZONING: PUD

NEIGHBORS: Natures Walk Subdivision, Jones County Recreation Complex, Jones County High School, Middle & Elementary Schools.

NOTES: This property is ideal for residential development. Possible commercial development fronting Highway 18 (With P&Z approval). Lot sizes approved for .25 ac and up. High density area. Potential commercial development examples include: small strip center or daycare out front.

2024	3 Mile	5 Mile	10 Mile
Population	7,657	11,327	35,960
Median Age	39.0	40.0	39.3
Avg. Household Income	\$93,211	\$94,206	\$84,918

Sale Price: \$8,000 per Acre

**FOR MORE
INFORMATION
CONTACT**

Trip Wilhoit, CCIM, ALC
478-746-9421
478-960-4080
twilhoit@fickling.com

Patty Burns, CCIM, ALC
478-746-9421
478-951-5100
pburns@fickling.com

commercial.fickling.com

577 Mulberry St, Suite 1100 * P.O. Box 310 * Macon, GA 31202 | Phone (478) 746-9421 | Fax (478) 742-2015

This information is from resources deemed to be reliable, no warranties or guarantees for accuracy are made by Fickling and Company

Residential Development Opportunity

Highway 18 East

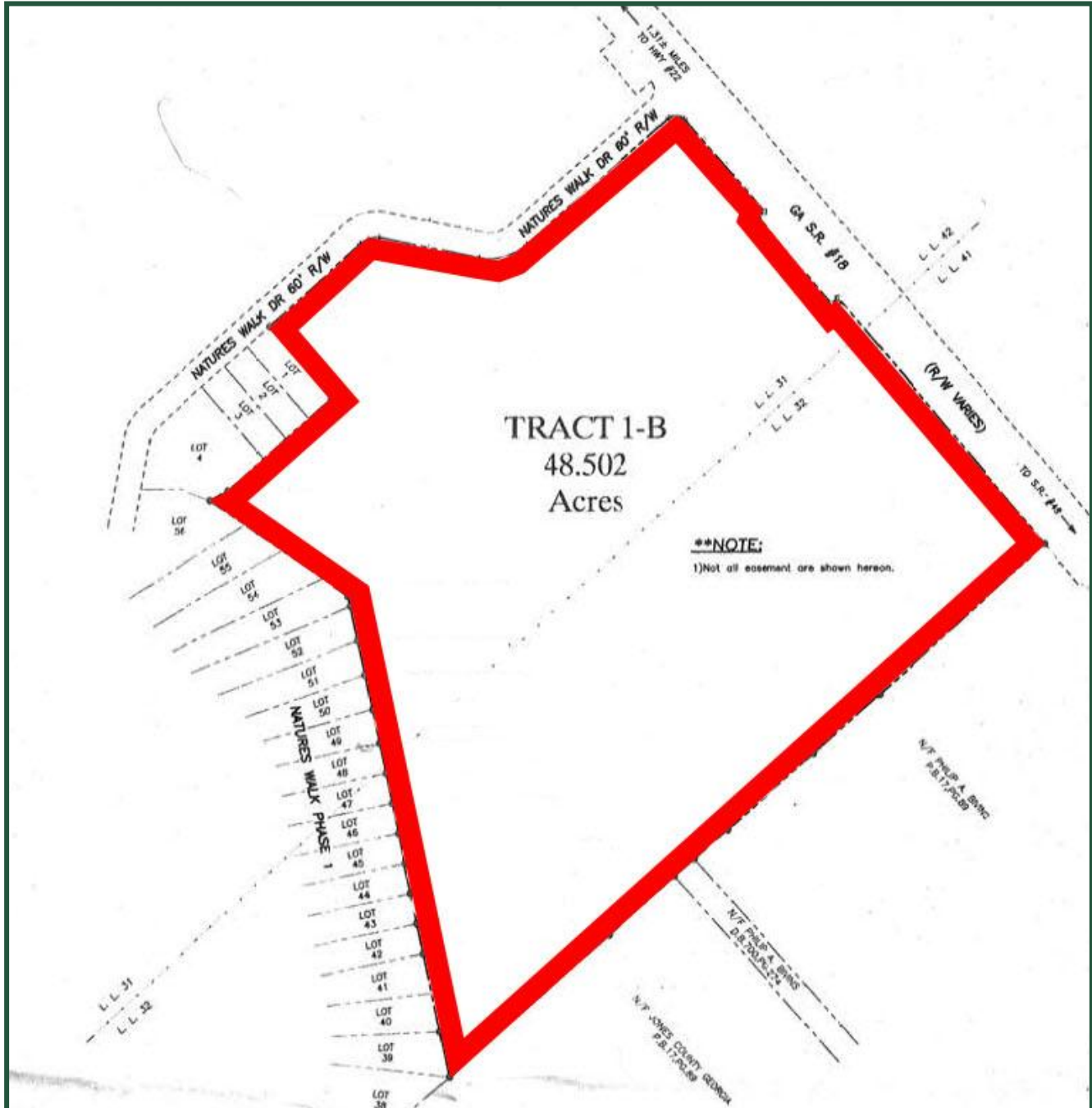
Gray, GA 31032 (Jones County)



**FICKLING
& COMPANY**

A Full Service Real Estate Company
commercial.fickling.com

PLAT



**FOR MORE
INFORMATION
CONTACT**

Trip Wilhoit, CCIM, ALC
478-746-9421
478-960-4080
twilhoit@fickling.com

Patty Burns, CCIM, ALC
478-746-9421
478-951-5100
pburns@fickling.com

commercial.fickling.com

577 Mulberry St, Suite 1100 * P.O. Box 310 * Macon, GA 31202 | Phone (478) 746-9421 | Fax (478) 742-2015

This information is from resources deemed to be reliable, no warranties or guarantees for accuracy are made by Fickling and Company